



# How to open the energy storage cabinet battery box ESS power base station





## Overview

---

This manual contains instructions for the installation and start up sequence of the Eguana Evolve™ ESS; including the PCS and master battery cabinets. This product is permanently wired to the home electrical service, and must be installed by a licensed electrician only.

This manual contains instructions for the installation and start up sequence of the Eguana Evolve™ ESS; including the PCS and master battery cabinets. This product is permanently wired to the home electrical service, and must be installed by a licensed electrician only.

from energy stored in capacitor. Do not remove the door until 10 minutes after disconnecting all sources when serving to the high voltages in the ESS charge or discharge arbitrarily. It may lead to spearing with a sharp object. It may contact with eyes, skin, or clothes. In event of accidental.

equipment and all safety precautions in the manual. In order to ensure better use of the product and ensure personal and property safety potential hazard and failure to avoid potential danger to supplement to the content may also protect within the scope of equipment quality assurance. The installation.

This manual contains important instructions for the Eguana Evolve™ ESS – including the Power Control System (PCS) and base model battery cabinet installation and operation. The AC Battery is expandable with the addition of up to two more battery cabinets. Refer to the manual, “Eguana AC Battery.

1 Safety This manual contains important instructions for the Eguana Evolve ESS . The Eguana Evolve ESS components described by this manual are intended to be used as part of an energy storage system and installed per all local building codes and regulations in addition to the National Electrical.

Please read this manual carefully before installing or operating BESS. Be sure to keep this manual for reference in the future. 8. The purpose of this manual is to ensure safe operation during installation, ensure the quality of equipment installation, ensure construction progress and promote.

This manual contains instructions for the installation and start up sequence of the



Eguana Evolve™ ESS; including the PCS and master battery cabinets. This product is permanently wired to the home electrical service, and must be installed by a licensed electrician only. The High Voltage All-In-One.



## How to open the energy storage cabinet battery box ESS power base



### [ECO ESS-Outdoor cabinet energy storage system ...](#)

After completing the inspection, turn on all BESS switches in turn and energize the AC circuit from the power grid to check whether BESS can operate normally without fault.

### **USER MANUAL Energy Storage System**

If a system fault occurs immediately after starting the system, check the error code on the Smart Energy Box (SE Box) display and follow the solution described in the manual.



### [Voltage battery cabinet installation ESS power base station](#)

This manual contains instructions for the installation and start up sequence of the Eguana Evolve™ ESS; including the PCS and master battery cabinets. This product is permanently ...

### **ser Manual**

Secure Cabinet and Box Doors Step 1 Reinstall the protective cover for the wiring area in the reverse order of the removal method (refer to "Opening Cabinet Doors").



### [Installation Manual Energy Storage System \(ESS\) NEOSUN ...](#)

For the exchange of a battery module, please request for new hazardous goods packaging if needed, pack it and let it be picked up by the suppliers. In case of contact with electrolyte, ...



### **MNL-000500**

Remove the cardboard box from the cabinet (right cabinet in a dual cabinet system). Use the packing list to verify all bus bars, cables, battery covers and hardware required for assembly is ...



### [Eguana Evolve ESS Installation & Start-Up Manual](#)

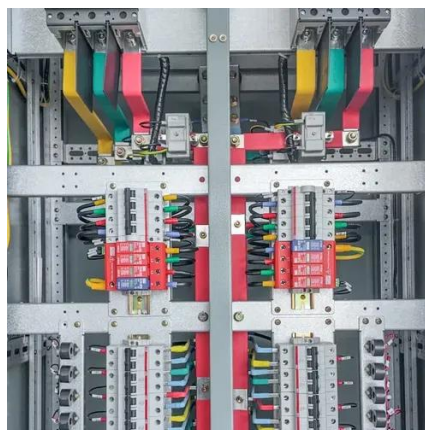
This manual contains instructions for the installation and start up sequence of the Eguana Evolve(TM) ESS; including the PCS and master battery cabinets. This product is permanently ...





## [TechnologyCo.,LTD ESS-GRIDCabinetSeries UserManual](#)

The operation mode of optical storage integrated outdoor energy storage cabinet can be divided into three kinds: grid-connected manual mode, grid-connected automatic mode, and off-grid ...



## **Evolve ESS Installation Manual**

This manual contains important instructions for the Eguana Evolve™ ESS - including the Power Control System (PCS) and base model battery cabinet installation and operation.

## [400 kW Battery Energy Storage System Installation and ...](#)

This manual contains important instructions that you should follow during installation and maintenance of the Battery Energy Storage System and batteries. Please read all instructions ...





## Contact Us

---

For inquiries, pricing, or partnerships:

<https://sccd-sk.eu>

Phone: +32 2 808 71 94

Email: [info@sccd-sk.eu](mailto:info@sccd-sk.eu)

Scan QR code for WhatsApp.

