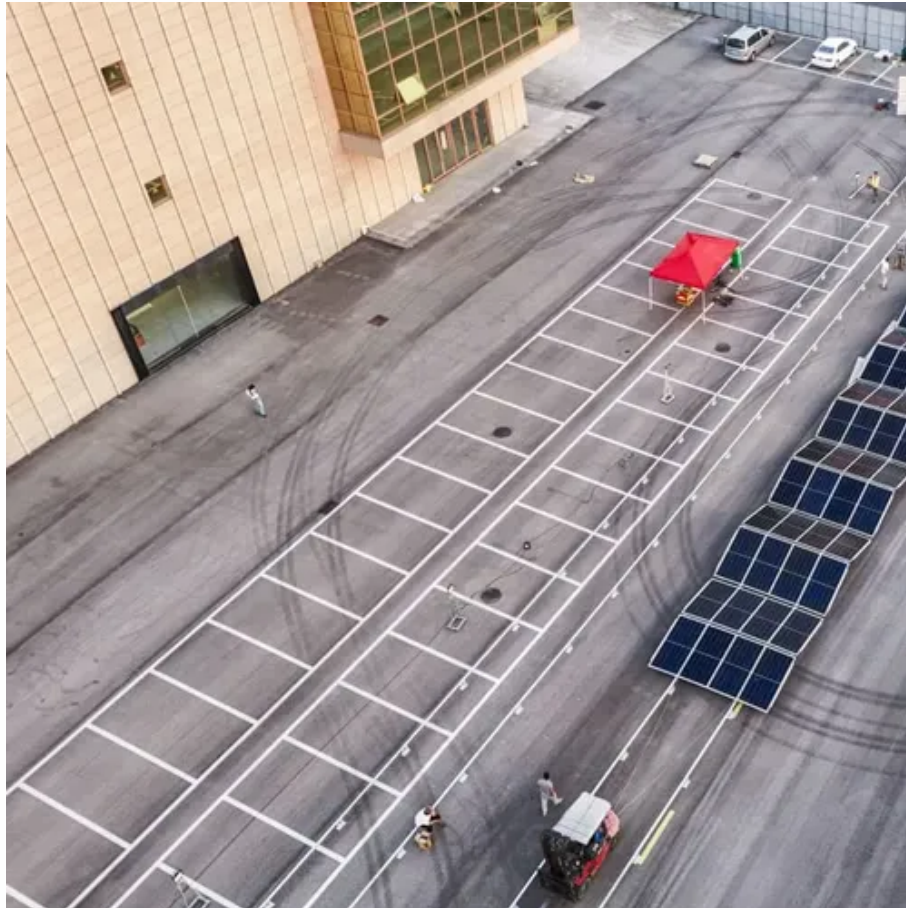




# How to place batteries in a battery cabinet





## Overview

---

For AA, AAA, C, and D batteries, slide the flat, negative end of the battery against the spring onto the device. Then, push the raised, positive end into the flat side of the compartment. For a 9-Volt battery, hold it at a 30° angle to line it up with the connector snaps.

For AA, AAA, C, and D batteries, slide the flat, negative end of the battery against the spring onto the device. Then, push the raised, positive end into the flat side of the compartment. For a 9-Volt battery, hold it at a 30° angle to line it up with the connector snaps.

Installation Video for cabinet battery and inverters, step-by-step guide teaches you how to install the MOTOMA LiFePO4 solar storage battery and solar hybrid inverter. Motoma cabinet battery is typically used for residence and commerce.more  
Installation Video for cabinet battery and inverters.

This article is a detailed guide on how to put batteries, how to identify the positive and negative sides, and the correct procedure for different types of installations as given by Tycorun. Batteries are a crucial part of our daily life. From small electronics to large machinery, every device.

From tools needed, step-by-step instructions, safety checks, and battery types to avoid common mistakes—this guide ensures optimal battery performance, safety, and longevity for various applications like inverters, motorcycles, and home solar systems. Batteries are an essential part of a wide range.

Optimize your device's performance by learning the essential steps for installing batteries correctly; discover the secrets to prolonging their lifespan. Installing batteries is simple once you know the steps. First, identify the battery type your device needs, like AA or 9-Volt. Next, locate the.

This is why investing in lithium-ion battery storage cabinets is essential for businesses handling rechargeable batteries. In this comprehensive guide, we explore the key aspects of lithium battery storage and the importance of battery charging cabinets for workplace safety. While lithium-ion.

Luckily, there are easy ways to remember how to insert batteries that work for all



kinds of devices. In this article, we'll tell you where to find your device's battery compartment and how to install AA, AAA, C, D, 9-volt, and button batteries. If you're ready to pop in those fresh batteries, read.



## How to place batteries in a battery cabinet

---



### [The Ultimate Battery Installation Guide For Beginners](#)

Learn how to safely and efficiently install batteries with this ultimate battery installation guide.

### How to put batteries in

This article is a detailed guide on how to put batteries, how to identify the positive and negative sides, and the correct procedure for different types of installations as given by ...



### [How to Install cabinet batteries and Inverters](#)

Installation Video for cabinet battery and inverters, step-by-step guide teaches you how to install the MOTOMA liFePO4 solar storage battery and solar hybrid inverter.



### Energy Storage Battery Cabinet Installation: Your Roadmap to ...

Let's face it - energy storage battery cabinets aren't exactly the Beyoncé of renewable energy systems. But just like backup dancers, they're



critical to the show.



## Battery Cabinet

The well-ventilated Battery Cabinet provides a housing for batteries that does not allow hydrogen to build up to a dangerous level inside the enclosure. Adequate ventilation must be provided

...

## Installation of 6-slot Enclosed Battery Cabinet with Busbar

Welcome to SUNGOLDPOWER's installation video for our new battery cabinets! This video provides a complete overview of the accessory components and a detailed step-by-step ...



## The Definitive Guide to Racks and Cabinets for Battery Banks

In this comprehensive guide, we will delve deep into the world of battery racks and cabinets. We will demystify their function, analyze different types and materials, and break ...





## [How to Put Batteries In: Simple Steps for Any Device](#)

First, identify the battery type your device needs, like AA or 9-Volt. Next, locate the battery compartment, often marked with symbols on the back or sides. Open it carefully, check ...



## [How to Put Batteries in Correctly: AA, AAA, 9V, & More](#)

When putting in batteries, the positive end of the battery matches up to the positive terminal in the compartment, and vice versa. It's very important that each battery is properly aligned inside the device.

## [The Ultimate Guide to Lithium-Ion Battery Storage Cabinets](#)

Discover the importance of lithium-ion battery storage cabinets for safe battery storage and charging. Learn best practices, key features, and how to choose the right battery ...



## [The Ultimate Guide to Lithium-Ion Battery Storage ...](#)

Discover the importance of lithium-ion battery storage cabinets for safe battery storage and charging. Learn best practices, key ...



## [How to Install cabinet batteries and Inverters](#)

Installation Video for cabinet battery and inverters, step-by-step guide teaches you how to install the MOTOMA liFePO4 solar ...



## [Installation of 6-slot Enclosed Battery Cabinet with ...](#)

Welcome to SUNGOLDPOWER's installation video for our new battery cabinets! This video provides a complete overview of the ...



## [How to Put Batteries in Correctly: AA, AAA, 9V, & More](#)

When putting in batteries, the positive end of the battery matches up to the positive terminal in the compartment, and vice versa. It's very important that each battery is ...





## Contact Us

---

For inquiries, pricing, or partnerships:

<https://sccd-sk.eu>

Phone: +32 2 808 71 94

Email: [info@sccd-sk.eu](mailto:info@sccd-sk.eu)

Scan QR code for WhatsApp.

