



How to set up an outdoor AP base station





Overview

This article describes the best practices for mounting outdoor access points (APs). For full installation instructions, read the B350 Outdoor Access Point Installation Guide.

This article describes the best practices for mounting outdoor access points (APs). For full installation instructions, read the B350 Outdoor Access Point Installation Guide.

Outdoor access points play a vital role in expanding your wireless network over larger distances, offering reliable and high-performance connectivity in areas such as campuses, parks, or outdoor event venues. By deploying these access points, you can reduce costs on infrastructure and wiring.

This article describes the best practices for mounting outdoor access points (APs). For full installation instructions, read the B350 Outdoor Access Point Installation Guide. Most defective access point claims are from water damage caused by missing drip loop or lighting strikes caused by improper.

There are basically four options in outdoor AP installation: wall mounting, pole mounting, corner mounting and roof mounting. Wall mounting is one of the most common and fastest methods to install the access points to the outside wall, but multiple holes need to be drilled to let the Ethernet.

A free tool that you can use to plan your wireless network is the Unifi Design Center. The tool allows you to place access points throughout your house and see the impact on your wireless network coverage. It's a bit more work, but it can really help you with planning your home network wiring. You.

Looking to maximize your outdoor WiFi coverage?

☐ In this video, I'll show you how to configure the TP-Link EAP650 Outdoor Omada access point step-by-step. Get reliable, high-speed WiFi outdoors with this powerful device, whether it's for your backyard, business, or event space! ☐ What You'll.

Cisco creates the infrastructure you need to transform how you connect, protect, and innovate in the AI era. Discover how Cisco technologies drive real-world



success for our customers and power Cisco's own operations and innovation. Unleash the power of AI with data centers designed for speed. What are the different types of outdoor AP installation options?

There are basically four options in outdoor AP installation: wall mounting, pole mounting, corner mounting and roof mounting.

How do you install an outdoor access point?

The Process of Outdoor Access Point Installation Use a marker pen to mark the location of the installation holes on the wall. Use an impact drill to drill holes in the wall according to the marked positions. Use a hammer to tap the expansion bolts vertically into the hole. Fix the bracket on the wall with four M6 screws.

How difficult is outdoor access point installation?

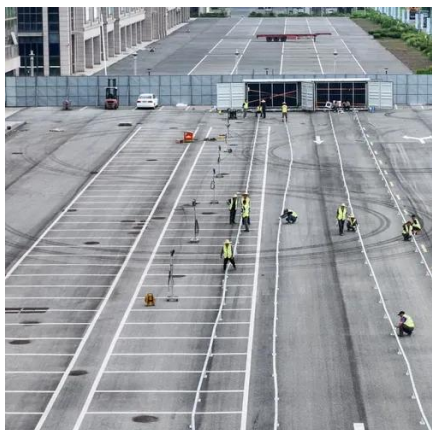
While outdoor access point installation is generally manageable, it does come with its set of challenges. Here is a summary of the most common issues encountered during installation: **Lack of Power Supply:** One of the main difficulties in outdoor deployments is ensuring a reliable power source.

Should APS be mounted on a pole?

Pole mounting is a good option when installing the APs away from the buildings, which is more common in a wireless mesh system where no cables need to be pulled to each location. It's ideal for providing a 360° overall coverage for your premises, but if the access point is mounted too close to the pole, the RF will be severely attenuated.



How to set up an outdoor AP base station



How to Install an Access Point

One of the most important things when it comes to installing an AP, is the location. I have installed many access points over the past years, and in this article, I am going to help ...

UAP-Outdoor Quick Start Guide

Perform the steps for the appropriate installation: This device must be professionally installed and it is the professional installer's responsibility to make sure the device is operated within local ...



[A Comprehensive Guide to Installing Wi-Fi 5 Outdoor Access](#)

This is where a 2.5G outdoor PoE switch with 10G uplink comes into play. In this blog, we'll break down what it is and how you can use it to install Wi-Fi 5 outdoor APs with ease.

Video Series: Best Practices for Installing Outdoor Wireless ...

This video series outlines the various best practices to be followed and common pitfalls to be avoided while installing outdoor wireless access



points.



[NEW! How to Configure TP-Link EAP650 Outdoor Omada \(2025\) ...](#)

Looking to maximize your outdoor WiFi coverage?
? In this video, I'll show you how to configure the
TP-Link EAP650 Outdoor Omada access point step-
by-step.

[Step-by-Step Outdoor Access Point Installation Guide](#)

This comprehensive guide covers the step-by-step
process for outdoor access point installation to
provide reliable network coverage in open areas
such as campuses or parks.



[Step-by-Step Outdoor Access Point Installation ...](#)

This comprehensive guide covers the step-by-step
process for outdoor access point installation to
provide reliable network coverage ...





UAP-Outdoor Quick Start Guide

Perform the steps for the appropriate installation:
This device must be professionally installed and it is the professional installer's responsibility to ...



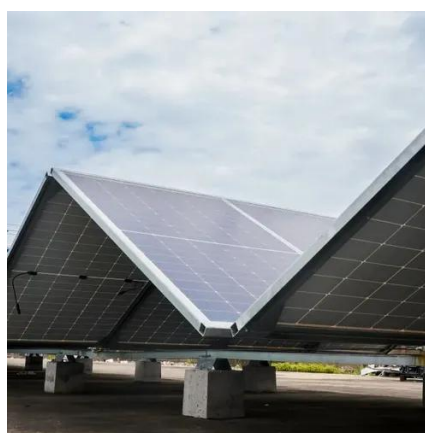
[Installation Guide for Outdoor Access Points](#)

One of the most important things when it comes to installing an AP, is the location. I have installed many access points over the past years, and in this article, I am going to help ...



[Four Time-Saving Tips for Outdoor WiFi Access ...](#)

Setting up outdoor WiFi access point bridges may require specific configurations. Learn more about these time-saving outdoor access point ...



[Installation Guide for Outdoor Access Points](#)

There are basically four options in outdoor AP installation: wall mounting, pole mounting, corner mounting and roof mounting.





[COMFAST Outdoor AP 4 Antennas Dual Band AP ...](#)

Using the wired connection, set the IP address of the TCP/IP properties of the wired network card to 192.168.188.X (X is number range of 2-252), and the PC will be the same IP segment as AP.



[Best Practices for Mounting Outdoor Access Points](#)

This article describes the best practices for mounting outdoor access points (APs). For full installation instructions, read the B350 Outdoor Access Point Installation Guide.



[Four Time-Saving Tips for Outdoor WiFi Access Point Bridge](#)

Setting up outdoor WiFi access point bridges may require specific configurations. Learn more about these time-saving outdoor access point installation tips.





Contact Us

For inquiries, pricing, or partnerships:

<https://sccd-sk.eu>

Phone: +32 2 808 71 94

Email: info@sccd-sk.eu

Scan QR code for WhatsApp.

