



# How to set up an outdoor wireless base station





## Overview

---

How do I set up a Wyze base station?

In the Wyze app, tap on your Wyze Base Station. Tap on the Settings gear on the top right. Tap Device Info > Wi-Fi Network. Follow the on-screen steps to finish the setup. Now that your Wyze Base Station is all set up, it's time to add your Wyze Cam Outdoor. Move on to the next article, Wyze Cam Outdoor Setup Guide.

Can I use Wyze base station on a Wi-Fi Connection?

Once it's set up, you can use Wyze Base Station on a Wi-Fi connection - no need for a router. To do this: In the Wyze app, tap on your Wyze Base Station. Tap on the Settings gear on the top right. Tap Device Info > Change Connection. You'll see one of the following screens: Select your network.

Why should you choose TP-Link outdoor wireless base station?

With its centralized management platform and high degree of flexibility, it is the ideal choice for providing point-to-point, point-to-multipoint, and outdoor Wi-Fi coverage. The TP-LINK Outdoor Wireless Base Station pairs professional performance with user-friendly design, making it the perfect solution for both business and home users.

How do you install an outdoor access point?

**The Process of Outdoor Access Point Installation** Use a marker pen to mark the location of the installation holes on the wall. Use an impact drill to drill holes in the wall according to the marked positions. Use a hammer to tap the expansion bolts vertically into the hole. Fix the bracket on the wall with four M6 screws.



## How to set up an outdoor wireless base station

---



### [5GHz 300Mbps Outdoor Wireless Base Station](#)

Up to 8% cash back · Pharos Base Stations work seamlessly with TP-LINK dish and sector antennas to provide efficient ...

### [Step-by-Step Outdoor Access Point Installation Guide](#)

This comprehensive guide covers the step-by-step process for outdoor access point installation to provide reliable network coverage in open areas such as campuses or parks.



### [How To Setup Wyze Cam Outdoor in Simple Steps](#)

Learn how to setup Wyze Cam Outdoor easily with our step-by-step guide for the perfect outdoor security solution.



### [How To Setup Wyze Cam Outdoor in Simple Steps ...](#)

Learn how to setup Wyze Cam Outdoor easily with our step-by-step guide for the perfect outdoor security solution.



## Wyze Base Station Setup Guide

Wyze Base Station is the communication hub for your Wyze Cam Outdoor and it is necessary for it to talk to your network. New to ...



## Wyze Cam Outdoor Quick Start Guide

Follow the Wyze app to set up the camera. Follow the instructions in the Wyze app to mount the camera. Prolonged direct sunlight can heat the inside of your camera past its maximum ...



## [WBSn-2400 Outdoor Wi-Fi Base Station Quick Start Guide](#)

This Quick Start Guide provides instructions on how to install and configure the WBSn-2400 Outdoor Wi-Fi Base Station. The guide covers topics such as installation, connecting power ...



## Wyze Cam Outdoor Quick Start Guide

Follow the Wyze app to set up the camera. Follow the instructions in the Wyze app to mount the camera. Prolonged direct sunlight can heat the ...



## Wyze Base Station Setup Guide

Wyze Base Station is the communication hub for your Wyze Cam Outdoor and it is necessary for it to talk to your network. New to Wyze? Before starting, download the Wyze app ...

## Wyze Cam Outdoor full setup guide

This lets you connect up to four (4) Wyze Cam Outdoor cameras to your Base Station at home, then take the camera (s) to a remote location (as long as it's still plugged into ...



## Wyze Cam Outdoor full setup guide

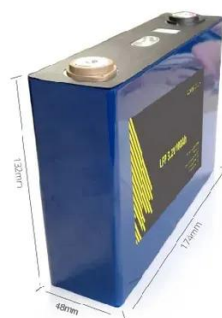
This lets you connect up to four (4) Wyze Cam Outdoor cameras to your Base Station at home, then take the camera (s) to a ...





## Wyze Base Station Setup

Get the most out of your Wyze Cam Outdoor with the Wyze Base Station. Follow these easy steps to set it up and ensure a strong and stable connection.



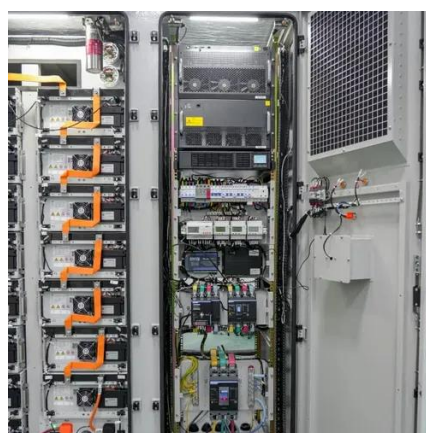
### [Wyze Base Station Setup Tutorial - How To Connect to](#)

Master your Wyze Base Station setup with our step-by-step tutorial. Learn how to connect to your network and switch to Wi-Fi effortlessly



## Wavion LTD.

This document is intended to help you set up and configure your WBSn-2400-O or WBSn-2400-S base station, using the online Setup wizard. Note: Throughout this document, unless specified ...



### [Step-by-Step Outdoor Access Point Installation ...](#)

This comprehensive guide covers the step-by-step process for outdoor access point installation to provide reliable network coverage ...





## 5GHz 300Mbps Outdoor Wireless Base Station

Pharos Base Stations works seamlessly with TP-LINK dish and sector antennas to provide efficient PtP and PtMP data transmission. Pharos Base Stations also feature a built-in ...



## **Wyze Base Station Setup**

Get the most out of your Wyze Cam Outdoor with the Wyze Base Station. Follow these easy steps to set it up and ensure a strong ...



## Contact Us

---

For inquiries, pricing, or partnerships:

<https://sccd-sk.eu>

Phone: +32 2 808 71 94

Email: [info@sccd-sk.eu](mailto:info@sccd-sk.eu)

Scan QR code for WhatsApp.

