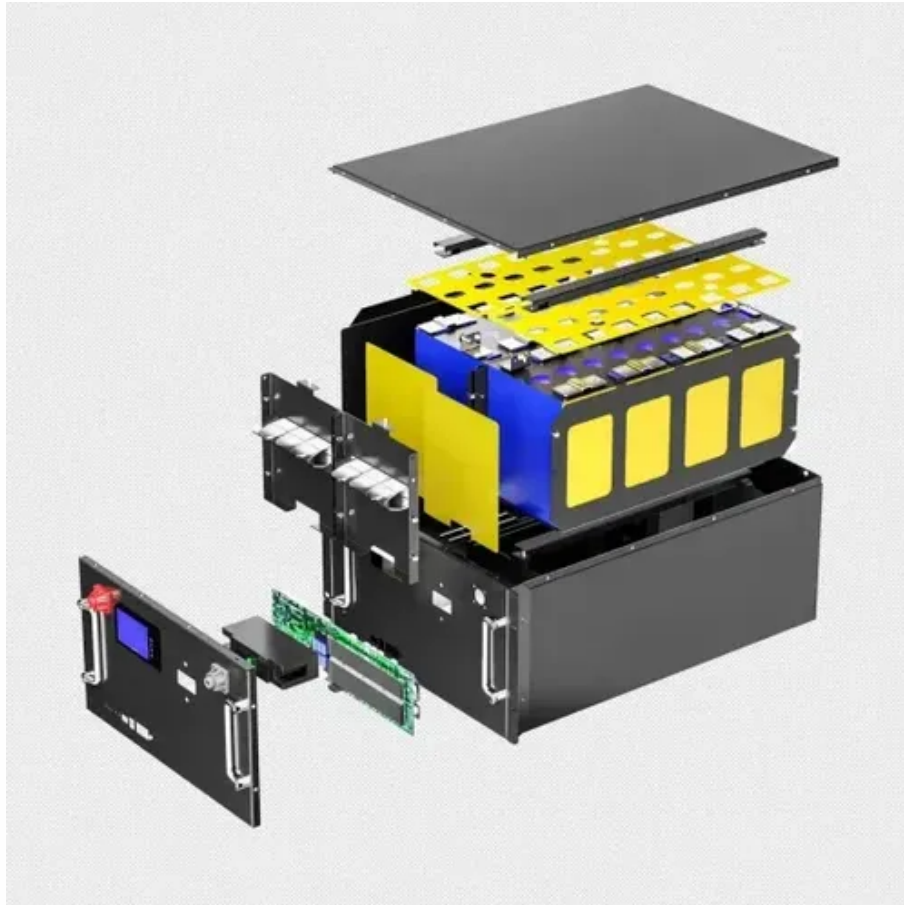




How wide is a set of solar panels





Overview

Most residential solar panels measure between 65 to 75 inches long and 39 to 41 inches wide, delivering power outputs ranging from 250 to 400 watts per panel.

Most residential solar panels measure between 65 to 75 inches long and 39 to 41 inches wide, delivering power outputs ranging from 250 to 400 watts per panel.

Solar panel size is measured in watts (W) and indicates how much electricity the panel can produce under standard test conditions. Here's the key distinction every homeowner should understand: Most residential solar panels in 2025 come in three main configurations: The most common choice for.

What is the length and width of a solar panel?

The length and width of a solar panel can vary depending on the type and model, but on average, a standard residential solar panel measures approximately 1.6 meters (about 65 inches) in length and 1 meter (about 39 inches) in width. The typical size.

Several types of solar panels are available on the market today. They differ in components and efficiency and can be selected depending on the user's needs. Let's have a closer look at the most popular ones: monocrystalline, polycrystalline, and thin-film solar panels: High-efficiency residential.

Solar panels have become the cornerstone of residential clean energy, with standard sizes designed to balance power output and installation practicality. Most residential solar panels measure between 65 to 75 inches long and 39 to 41 inches wide, delivering power outputs ranging from 250 to 400.

What Size Are Solar Panels?

A Comprehensive Guide to Dimensions and Types The size of solar panels typically ranges from 65 inches by 39 inches for 60-cell units to approximately 77 inches by 39 inches for 72-cell units, which directly influences their power generation capabilities. The article. What are the dimensions of standard solar panels?

Most solar panels are about 1.5 inches thick. The typical classification of solar



panel sizes is based on the solar cell size, but it's not very useful for most calculations.

What size solar panels do I Need?

Solar panels have become the cornerstone of residential clean energy, with standard sizes designed to balance power output and installation practicality. Most residential solar panels measure between 65 to 75 inches long and 39 to 41 inches wide, delivering power outputs ranging from 250 to 400 watts per panel.

Why are solar panel dimensions important?

Understanding solar panel dimensions is crucial for planning your solar system installation, maximizing efficiency, and ensuring compatibility with your available space. In this blog, we'll break down the standard sizes of solar panels, explain how panel dimensions impact performance, and help you choose the ideal size for your needs.

How do I choose the right solar panel size?

The solar panel size directly affects how much power your system can produce, how many panels you need, and whether your available roof space can support the installation. Choosing the proper system is not only about the solar panel dimensions. You should also consider wattage, number of cells, layout possibilities, and energy consumption.



How wide is a set of solar panels



What is the length and width of a solar panel?

The length and width of a solar panel can vary depending on the type and model, but on average, a standard residential solar panel ...

The Ultimate Solar Panel Size Guide for Every Homeowner

Solar panel size is a fundamental metric in any solar installation. The physical dimensions of a panel determine the number of solar cells it contains, which directly affects its ...



Standard Solar Panel Sizes And Wattages (100W ...

Whenever you want to find out what the standard solar panel sizes and wattages are, you encounter a big problem: There is no standardized ...



Perfect Solar Panel Sizes for Your Home (Expert Sizing Guide)

Most residential solar panels measure between 65 to 75 inches long and 39 to 41 inches wide, delivering power outputs ranging from 250 to 400



watts per panel.



[Solar Panel Dimensions and Weight: A Complete Guide , Angi](#)

Most homes use 60-cell panels that are roughly 65-by-39 inches. Depending on the brand you buy, you'll find a couple of inches of variation on either dimension. For 60-cell ...



[What is the length and width of a solar panel? , NenPower](#)

The length and width of a solar panel can vary depending on the type and model, but on average, a standard residential solar panel measures approximately 1.6 meters (about ...



[Understanding Solar Panel Dimensions In 2025: A ...](#)

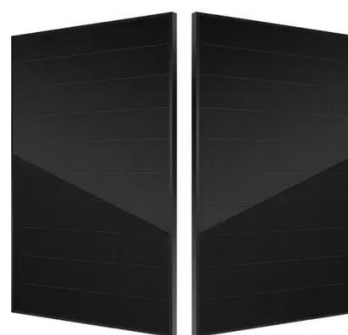
Understanding solar panel dimensions is crucial for planning your solar system installation, maximizing efficiency, and ensuring ...





Understanding Solar Panel Dimensions In 2025: A Complete Size ...

Understanding solar panel dimensions is crucial for planning your solar system installation, maximizing efficiency, and ensuring compatibility with your available space. In this ...



[Solar Panel Size & Dimensions Guide 2025 . Complete Specs](#)

In this comprehensive guide, you'll learn everything you need to know about solar panel sizing, from standard dimensions to weight considerations, helping you determine the ...

[Standard Solar Panel Sizes And Wattages \(100W-500W ...](#)

Whenever you want to find out what the standard solar panel sizes and wattages are, you encounter a big problem: There is no standardized chart that will tell you, for example, "A ...



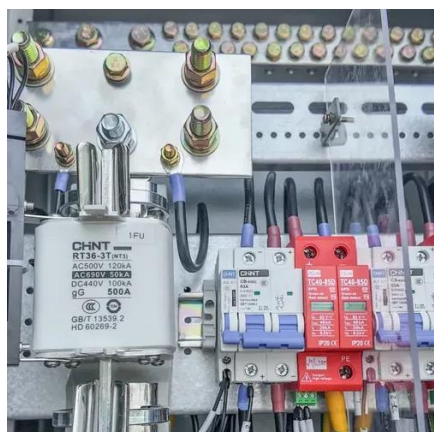
Size of Solar Panels Explained: Residential and Commercial ...

These panels come in a standard size, which is approximately 1650 x 990 mm (65 x 39 inches). They are smaller in size and lighter in weight compared to commercial solar ...



What Size Are Solar Panels? A Comprehensive Guide to ...

When asking what size are solar panels, it's typical for residential energy modules to measure around 65 inches by 39 inches, with efficiency ratings ranging from 15% to 22%, ...



Detailed Guide to Solar Panel Size & Dimensions

Choosing the proper system is not only about the solar panel dimensions. You should also consider wattage, number of cells, layout ...

Detailed Guide to Solar Panel Size & Dimensions

Choosing the proper system is not only about the solar panel dimensions. You should also consider wattage, number of cells, layout possibilities, and energy consumption. ...





Contact Us

For inquiries, pricing, or partnerships:

<https://sccd-sk.eu>

Phone: +32 2 808 71 94

Email: info@sccd-sk.eu

Scan QR code for WhatsApp.

