



# How wide should the road to the energy storage power station be

Warranty  
**10 years**

LiFePO<sub>4</sub>

Intelligent BMS

Wide Temp:  
-20°C to 55°C





## Overview

---

Spacing Secrets: NEC 2023 now requires 3ft between containerized systems. Skip this, and your insurance agent will laugh you out of their office Let's cut to the chase—nobody builds these for fun. Current averages: \$280/kWh for utility-scale lithium systems (down 12% since 2022!).

Spacing Secrets: NEC 2023 now requires 3ft between containerized systems. Skip this, and your insurance agent will laugh you out of their office Let's cut to the chase—nobody builds these for fun. Current averages: \$280/kWh for utility-scale lithium systems (down 12% since 2022!).

When we talk about energy storage power station project land area, we're not just discussing dirt and concrete. This topic matters to: Fun fact: The average 100MW lithium-ion battery farm needs about 2-5 acres - roughly equivalent to storing Manhattan's evening energy demand in Central Park's Sheep.

In part two of our three-part series, our experts cover the entitlement and permitting considerations that impact a BESS project. In case you missed it, part one covers Eight Battery Energy Storage System (BESS) Site Requirements You Might Be Forgetting. Since BESS is still relatively new and many.

To successfully prepare for the construction of an energy storage power station, several critical elements must be taken into account. 1. Site assessment, 2. Regulatory compliance, 3. Engineering design, 4. Financial analysis. Site assessment is essential to determine the most suitable location for.

Our expertise spans across civil engineering, structural engineering, and environmental engineering services, tailored to meet the unique demands of battery storage projects in the Dallas, Houston, Corpus Christi, Austin, San Antonio, Galveston Bay, and Beaumont metropolitan areas. As a local Texan.

Battery storage power stations store electrical energy in various types of batteries such as lithium-ion, lead-acid, and flow cell batteries. These facilities require efficient operation and management functions, including data collection capabilities, system control, and management capabilities.

not necessary for these energy storage systems. Define BESS as a land



use, separate from electric generation or production but consistent with the energy infrastructure, such as substations. BESS have potential community benefits which utilities will need to address BESS in some form. This issue of. What are battery storage power stations?

Battery storage power stations are usually composed of batteries, power conversion systems (inverters), control systems and monitoring equipment. There are a variety of battery types used, including lithium-ion, lead-acid, flow cell batteries, and others, depending on factors such as energy density, cycle life, and cost.

How a power station is designed to meet the load requirements?

A power station is designed to meet the load requirements of the consumers. An ideal load on the station, from stand point of equipment needed and operating routine, would be one of constant magnitude and steady duration. However, such a steady load on the station is never realised in actual practice. The consumers require.

What are the core functions of energy storage power stations?

In addition to these core functions, functions such as anti-backflow protection, support for parallel/off-grid operation, and islanding protection further enhance the reliability and versatility of energy storage power stations.

Why do battery storage power stations need a data collection system?

Battery storage power stations require complete functions to ensure efficient operation and management. First, they need strong data collection capabilities to collect important information such as voltage, current, temperature, SOC, etc.



## How wide should the road to the energy storage power station be

---

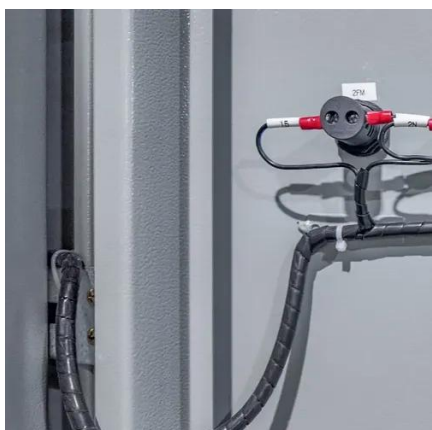


### Entire process of developing an energy storage power station

This article will provide an in-depth analysis of the entire process of building an energy storage power station, covering 6 major stages and over 20 key steps, along with 6 core points to help ...

### [What to prepare for energy storage power station ...](#)

Various energy storage technologies exist, ranging from batteries to thermal storage systems, each with unique attributes. ...



### [Entitlements and Permitting Experts on BESS](#)

Our experts cover the entitlement and permitting considerations that impact a battery energy storage system project.

### The Essential Guide to Land Requirements for Battery Storage ...

The capacity of the battery storage system directly influences the amount of land needed. Larger systems require more space not only for



the batteries themselves but also for ...



### [Energy storage power station land use standards](#)

To leverage the efficacy of different types of energy storage in improving the frequency of the power grid in the frequency regulation of the power system, we scrutinized the capacity ...



### **What to prepare for energy storage power station construction**

Various energy storage technologies exist, ranging from batteries to thermal storage systems, each with unique attributes. Understanding regulatory limitations is crucial, ...



### [Battery storage power station - a comprehensive guide](#)

This article provides a comprehensive guide on battery storage power station (also known as energy storage power stations). These facilities play a crucial role in modern power ...





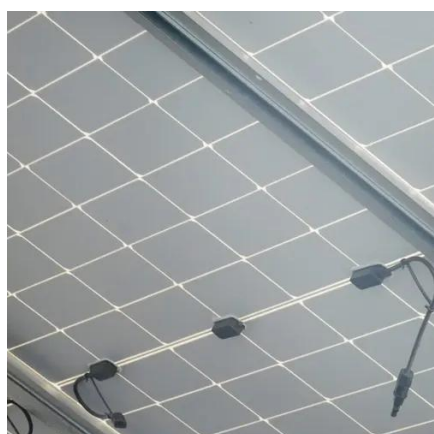


## [Battery storage power station - a comprehensive guide](#)

This article provides a comprehensive guide on battery storage power station (also known as energy storage power stations). These facilities play a crucial role in modern power grids by ...



2MW / 5MWh  
Customizable



## **Energy Storage Power Station Construction Guide: Key Steps ...**

Spacing Secrets: NEC 2023 now requires 3ft between containerized systems. Skip this, and your insurance agent will laugh you out of their office. Let's cut to the chase--nobody ...

## [How is the energy storage power station built? , NenPower](#)

Engaging in an integrated approach that harmonizes engineering prowess, environmental considerations, logistical management, and community engagement is ...



## [Energy Storage Power Station Project Land Area: What You ...](#)

Access roads wide enough for fire trucks (no, golf carts won't cut it) Pro tip: Many developers now use drone-based land surveys to identify "micro sites" - those awkward ...



## [Entitlements and Permitting Experts on BESS , Kimley-Horn](#)

Our experts cover the entitlement and permitting considerations that impact a battery energy storage system project.



## **A planning scheme for energy storage power station based on ...**

To reduce the waste of renewable energy and increase the use of renewable energy, this paper proposes a provincial-city-county spatial scale energy storage configuration ...

## [The Essential Guide to Land Requirements for ...](#)

The capacity of the battery storage system directly influences the amount of land needed. Larger systems require more space not only ...





## Contact Us

---

For inquiries, pricing, or partnerships:

<https://sccd-sk.eu>

Phone: +32 2 808 71 94

Email: [info@sccd-sk.eu](mailto:info@sccd-sk.eu)

Scan QR code for WhatsApp.

