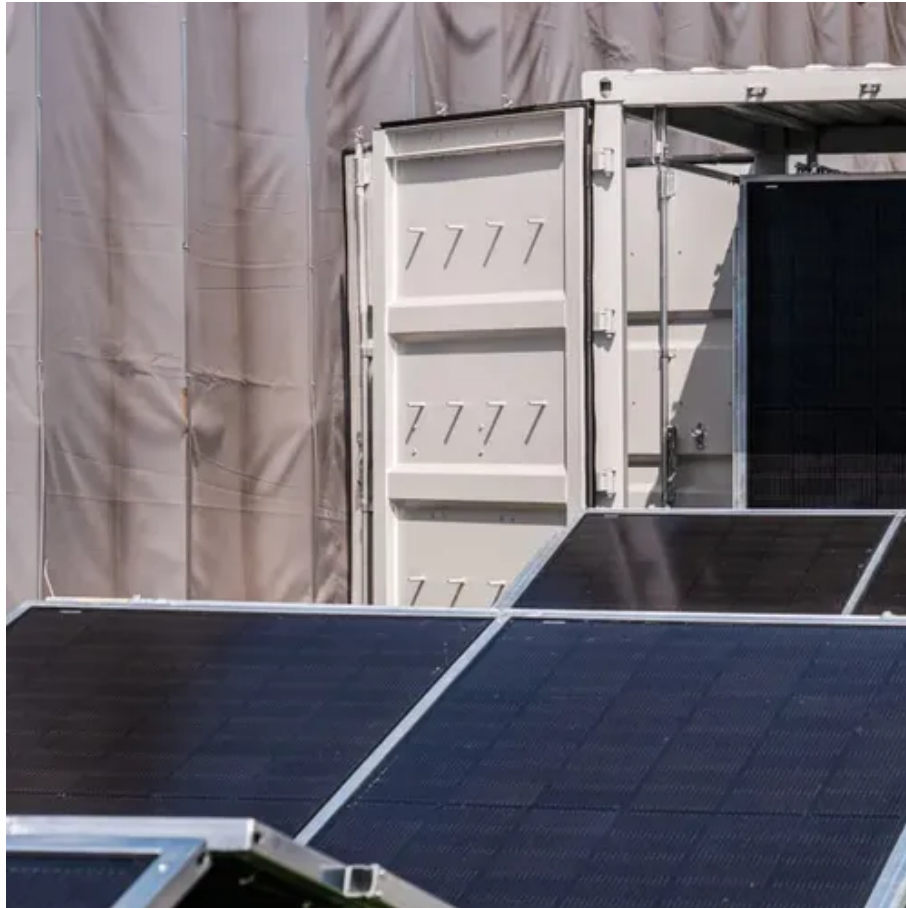




# Huawei 5g base station communication distance





## Overview

---

What is a Huawei base station?

Let's dive into a technical explanation. A base station, also known as an eNodeB (for 4G LTE) or gNodeB (for 5G NR) in Huawei's terminology, is a piece of equipment that facilitates wireless communication between user equipment (UE) like smartphones, tablets, and IoT devices, and the core network of the telecommunications provider.

What is a standalone 5G network?

Standalone (SA): standalone networking. SA uses an end-to-end 5G network architecture, where 5G standards are used on terminals, base stations, and core networks. SA supports a variety of 5G new services, including eMBB, URLLC, and mMTC, and is applicable to the middle and later stages of 5G network construction.

What is a 5G network architecture?

SA uses an end-to-end 5G network architecture, where 5G standards are used on terminals, base stations, and core networks. SA supports a variety of 5G new services, including eMBB, URLLC, and mMTC, and is applicable to the middle and later stages of 5G network construction. Routers support NSA and SA.

What is a Huawei bbu5900 base station?

With its advanced features and energy-efficient design, the Huawei BBU5900 base station is a scalable and future-proof solution, ideal for deployment across various environments, including urban, suburban, and rural areas.



## Huawei 5g base station communication distance

---

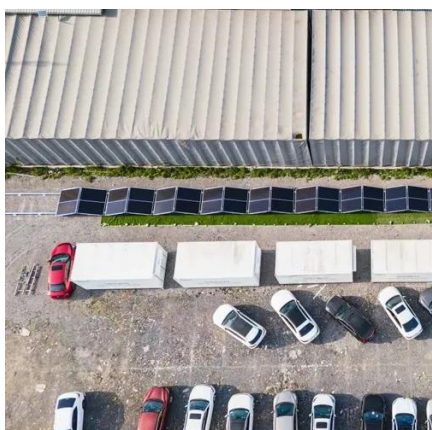


### **Huawei Base Station: Types, Mechanical Properties, and How to ...**

Thanks to advanced antenna systems and spectrum efficiency, Huawei base stations deliver strong signals over long distances while minimizing power consumption. This ...

### [Top 5G Base Station gNodeB Manufacturers](#)

Explore the leading manufacturers of 5G gNodeB base stations, including Nokia, Ericsson, Huawei, Samsung, and ZTE, and their contributions to ...



### **huawei base station**

Huawei provides comprehensive management and control systems, such as Huawei's U2000 or Huawei's Cloud BTS. These systems enable operators to monitor, ...

### [Base Station Huawei BBU5900 Series 5G LTE UBBPF1 ...](#)

Designed with robust processing capabilities and flexible networking options, the BBU5900 series provides seamless integration with Huawei



Remote Radio Units (RRUs), enabling enhanced ...



### [Communication distance of Huawei base station](#)

China Mobile and Huawei have together built the highest elevation 5G (or any other) base station on this planet- at 6500 meters (21,300 feet) at Mount Everest where there are no roads or trails.

### [5G Network Architectures and Technologies](#)

Two types of eNBs are available: One is the conventional LTE eNB, supporting connections to an LTE core network, and the other is the enhanced LTE (eLTE) eNB, supporting connections to ...



### [Top 5G Base Station gNodeB Manufacturers & Vendors](#)

Explore the leading manufacturers of 5G gNodeB base stations, including Nokia, Ericsson, Huawei, Samsung, and ZTE, and their contributions to the telecom industry.







## Base Station Huawei BBU5900 Series 5G LTE ...

Designed with robust processing capabilities and flexible networking options, the BBU5900 series provides seamless integration with Huawei Remote ...



## Huawei base station communication distance

The transmission distance of a single-mode optical cable at one level (that is, from the BBU to an RRU or from one RRU to another RRU) is 40 km. The RRU supports a maximum of three ...

## **Huawei's world's first 5G-A smart base station technology ...**

Huawei 5G-A smart base stations redefine the intelligent standards of communication infrastructure through the "AI chip + digital twin + multi-agent" technology stack.



## DBS5900 Distributed Base Stations -- Huawei Enterprise

The DBS5900 can meet the needs of industry users for wireless broadband access and multimedia critical communication, and obtain better coverage and user experience. The ...



## Enterprise Wireless

It obtains physical information such as the relative distance, speed, angle, and movement direction of traffic vehicles and people through the millimeter wave radar beam, and classifies ...



## [DBS5900 Distributed Base Stations -- Huawei ...](#)

The DBS5900 can meet the needs of industry users for wireless broadband access and multimedia critical communication, and obtain better ...

## Enterprise Wireless

It obtains physical information such as the relative distance, speed, angle, and movement direction of traffic vehicles and people through the ...





## Contact Us

---

For inquiries, pricing, or partnerships:

<https://sccd-sk.eu>

Phone: +32 2 808 71 94

Email: [info@sccd-sk.eu](mailto:info@sccd-sk.eu)

Scan QR code for WhatsApp.

