



Huawei base station product power module





Overview

The Huawei R4850N6 is a high-efficiency 48V 3000W telecom power supply module designed for reliable DC power systems. It is widely used in Huawei base stations, cabinets, and access network equipment to ensure stable power conversion and protection.

The Huawei R4850N6 is a high-efficiency 48V 3000W telecom power supply module designed for reliable DC power systems. It is widely used in Huawei base stations, cabinets, and access network equipment to ensure stable power conversion and protection.

The DBS5900 is a wireless access device for the eLTE wireless broadband private network solution. It provides wireless access functions, including air interface management, access control, mobility control, and user resource allocation. The DBS5900 can meet the needs of industry users for wireless.

The advanced power module with heat exchanger (APM30H) is used for Huawei wireless products outdoors. It is small and easy to transport. The APM30H supplies DC power to the distributed or separated macro base station in outdoor scenarios. It provides space for both the BBU and transmission equipment.

The Huawei R4850N6 is a high-efficiency 48V 3000W telecom power supply module designed for reliable DC power systems. It is widely used in Huawei base stations, cabinets, and access network equipment to ensure stable power conversion and protection. The R4850N6 module is compatible with multiple.

5900 series base stations have a modular design. The basic modules are the baseband unit (BBU), Remote radio unit (RRU). The BBU uses common public radio interfaces (CPRIs) and electrical or optical cables to communicate with the RRUs. The UBBP is a baseband processing unit and centrally manages.

The ES-M48100A9 Huawei Lithium Battery Module is an advanced, high-performance energy storage solution designed for telecom base stations, data centers, and renewable energy systems. With a 48V nominal voltage, 100Ah capacity, and 4800W output, this battery ensures long-lasting backup power.

BTS5900 Hardware Description mainly describes the exterior, configurations, and



engineering specifications of the cabinet. The RF modules for distributed base stations in this document include RRUs and AAUs. The application scenarios, power distribution schemes, cable connections, and cable.



Huawei base station product power module



DBS5900 Product Description

HUAWEI TECHNOLOGIES CO., LTD. 5900 series base stations have a modular design. The basic modules are the baseband unit (BBU), Remote radio unit (RRU). The BBU uses ...

[HUAWEI DBS3900 Dual-Mode Base Station Hardware ...](#)

The RF module integrates the duplexer and the Transceiver Unit (TRU), thus enhancing integrity of RF parts and meeting future requirements for a compact, high-efficiency, and low-cost base ...



[DBS5900 Distributed Base Stations -- Huawei ...](#)

The DBS5900 adopts a modular structure, with the baseband unit BBU and remote radio unit RRU deployed separately. The DBS5900 has the ...



[ESM-48100A9 Huawei Brand New 48V 100Ah Lithium Battery ...](#)

The ESM-48100A9 Huawei Lithium Battery Module is an advanced, high-performance energy storage solution designed for telecom base stations, data



centers, and renewable energy ...



Site Power Solutions & Facility , Huawei Digital Power

The blade power supplies and lithium batteries are widely used in macro/micro sites. The system uses free cooling thanks to an original ...

Huawei RRU5904-2100

B.W INDUSTRY NEW Huawei RRU5904-2100, distributed base station remote unit RRU5904 (4*60W, 2100M, 48V) new original, complete ...



Site Power Solutions & Facility , Huawei Digital Power

The blade power supplies and lithium batteries are widely used in macro/micro sites. The system uses free cooling thanks to an original butterfly design and bionic root heat dissipation.

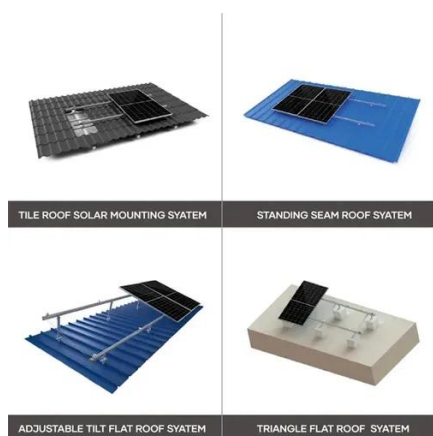


Huawei R4850N6

The Huawei R4850N6 is a high-efficiency 48V 3000W telecom power supply module designed for reliable DC power systems. It is widely used in Huawei base stations, cabinets, and access ...



1075KWHH ESS



Huawei RRU5904-2100

B.W INDUSTRY NEW Huawei RRU5904-2100, distributed base station remote unit RRU5904 (4*60W, 2100M, 48V) new original, complete accessories R4850g2 4850g2 New And Original ...

BTS5900 Hardware Description

Explore the BTS5900 base station hardware, including cabinet components, specifications, and configurations. A comprehensive guide for telecom engineers.



[New 100% And Original R4850n6 50a 3000w Rectifier Module ...](#)

The communication rectifier module is packed in the original carton, and it contains electrostatic bags and foam to ensure the safety of the rectifier module during transportation.



BTS5900 Hardware Description

Explore the BTS5900 base station hardware, including cabinet components, specifications, and configurations. A comprehensive guide for telecom ...



ESS



[Huawei APM30 power module with heat exchanger](#)

The APM30H supplies DC power to the distributed or separated macro base station in outdoor scenarios. It provides space for both the BBU and transmission equipment.

[DBS5900 Distributed Base Stations -- Huawei Enterprise](#)

The DBS5900 adopts a modular structure, with the baseband unit BBU and remote radio unit RRU deployed separately. The DBS5900 has the characteristics of small size, low power ...



New 100% And Original R4850n6 50a 3000w Rectifier Module Power ...

The communication rectifier module is packed in the original carton, and it contains electrostatic bags and foam to ensure the safety of the rectifier module during transportation.

12.8V6Ah

Nominal voltage (V):12.8
 Nominal capacity (Ah):6
 Rated energy (WH):76.8
 Maximum charging voltage (V):14.6
 Maximum charging current (A):6
 Floating charge voltage (V):13.6-13.8
 Maximum continuous discharge current (A):10
 Maximum peak discharge current @10 seconds (A):20
 Maximum load power (W):100
 Discharge cut-off voltage (V):10.8
 Charging temperature (°C):0-+50
 Discharge temperature (°C):-20-+60
 Working humidity: <95% R.H (non condensing)
 Number of cycles (25 °C, 0.5C, 100%DoD): >2000
 Cell combination mode: 32700-4s1p
 Terminal specification: T2 (6.3mm)
 Protection grade: IP65
 Overall dimension (mm):90*70*107mm
 Reference weight (kg):0.7
 Certification: un38.3/msds



Contact Us

For inquiries, pricing, or partnerships:

<https://sccd-sk.eu>

Phone: +32 2 808 71 94

Email: info@sccd-sk.eu

Scan QR code for WhatsApp.

