



Investment of 600 million energy storage power station





Overview

The \$600 million project, owned and operated by Arevon, is expected to generate over \$30 million in payments to local governments over its lifespan, including approximately \$12 million to the City of Poway. Electrical contractor Rosendin, based in California, is leading.

The \$600 million project, owned and operated by Arevon, is expected to generate over \$30 million in payments to local governments over its lifespan, including approximately \$12 million to the City of Poway. Electrical contractor Rosendin, based in California, is leading.

Construction is underway on the 300-megawatt/1,200-megawatt-hour Nighthawk Energy Storage Project in Poway, north of San Diego, a major new battery storage facility being developed by renewable energy company Arevon Energy. The \$600 million project, owned and operated by Arevon, is expected to.

The company on July 31 provided more details of the 300-MW/1,200-MWh installation that represents a \$600-million investment. Arevon will own and operate Nighthawk. The company in 2021 signed a long-term contract under which the energy storage facility will provide power and resource adequacy to.

Arevon Energy, a leading U.S.-based renewable energy company headquartered in Arizona, has officially begun construction on its latest large-scale infrastructure investment—the Nighthawk Energy Storage Project in Poway, California. The utility-scale battery facility is designed to deliver 300.

The energy company says it is investing a mid-three-digit million euro amount into construction of the 600 MW battery energy storage system (BESS). RWE recently commissioned a large BESS in Hamm. Now, another 600 MW/1.2 GWh are planned. | Image: RWE German energy company RWE is building a 600.

Investor-owned utility (IOU) Southwestern Public Service Company (SPS) is seeking approval from the New Mexico Public Regulation Commission (NMPRC) to construct a new eight-project portfolio of self-build energy assets. The portfolio includes two BESS projects totalling 472MW/1.88GWh of cumulative.

What is the total investment of Kunshan energy storage power station?



The total investment of the Kunshan energy storage power station amounts to 1,000 million yuan, with 600 million yuan funded by various stakeholders, and the project aims to enhance renewable energy integration. The initiative. Will RWE build a 600 MW battery energy storage system?

The energy company says it is investing a mid-three-digit million euro amount into construction of the 600 MW battery energy storage system (BESS). RWE recently commissioned a large BESS in Hamm. Now, another 600 MW/1.2 GWh are planned.
| Image: RWE.

What is the Roadhouse energy storage project?

The Roadhouse Energy Storage Project is a large-scale standalone BESS under development by NextEra Energy Resources (NEER) in Ontario, California. Designed with a total capacity of 600 MW / 2,400 MWh, the project is positioned to strengthen California's grid reliability while supporting renewable integration.

How much is RWE investing in a battery storage system?

RWE is investing a mid three-digit million euro sum for the construction. The systems can generate their maximum output for up to two hours at a time. Together with the battery storage system that went into operation in February, the site in Hamm will have a storage capacity of 1.35 gigawatt hours in future.



Investment of 600 million energy storage power station

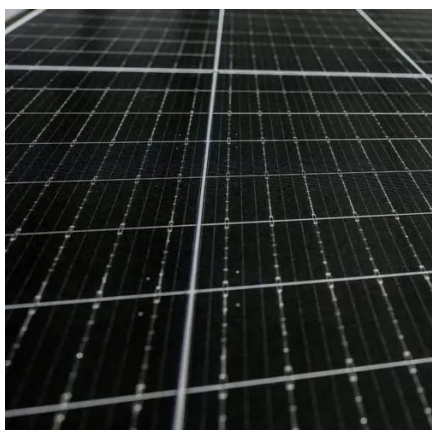


Xcel Energy to build Upper Midwest's largest battery storage site

The batteries will re-use existing grid connections, allowing Xcel Energy to store energy produced across its Upper Midwest system at its wind, solar, nuclear and natural gas facilities and ...

What is the total investment of Kunshan energy storage power station

The total investment of the Kunshan energy storage power station amounts to 1,000 million yuan, with 600 million yuan funded by various stakeholders, and the project aims ...



[Arevon Begins \\$600M Nighthawk Energy Storage Project in ...](#)

The utility-scale battery facility is designed to deliver 300 megawatts (MW) of power and store 1,200 megawatt-hours (MWh) of electricity, representing a \$600 million investment ...

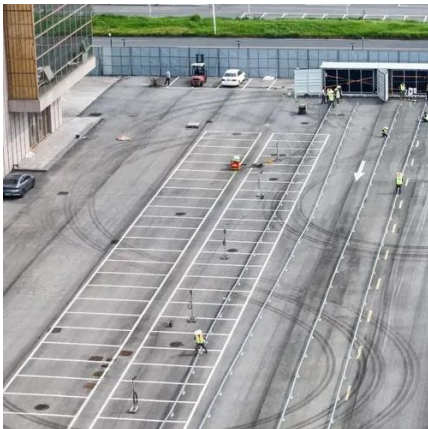
Top 7 Battery Energy Storage System (BESS) Projects in the ...

Discover the largest battery storage projects in the U.S. for 2025, including Darden, Bellefield, and Swiftsure.



SPP utility to invest in 1.9GWh New Mexico, Texas BESS units

With SPS planning to invest approximately US\$634 million into the Plant X and Sagamore BESS additions, the utility hopes to recoup some of this cost by qualifying for ...



Areva Starts Construction of \$600-Million ...

Arizona-headquartered Areva Energy said it has started construction of the Nighthawk Energy Storage Project in Poway, ...



RWE plans 1.2 GWh battery on German former ...

German energy company RWE is building a 600 MW/1.2 GWh BESS on the site of the former Westfalen coal-fired power plant in ...





Construction begins on \$600-million Nighthawk Energy storage ...

The \$600 million project, owned and operated by Arevon, is expected to generate over \$30 million in payments to local governments over its lifespan, including approximately ...



Arevon Starts Construction of \$600-Million California Energy Storage

Arizona-headquartered Arevon Energy said it has started construction of the Nighthawk Energy Storage Project in Poway, California. The company on July 31 provided ...



[Arevon Celebrates Construction Proceedings at its 300 ...](#)

Within the last two years, Arevon has completed more than \$3.8 billion in project financings and closed on a \$600 million corporate revolver to fund continued company growth.



RWE is building battery storage facility with an output of more ...

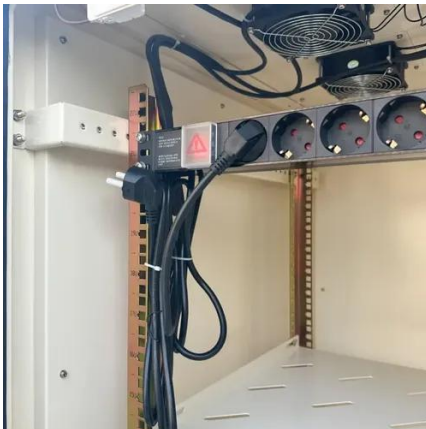
On the site of the Westfalen power plant in Hamm (Germany, North Rhine-Westphalia), RWE is building three new battery parks with a total installed capacity of around ...





RWE is building battery storage facility with an ...

On the site of the Westfalen power plant in Hamm (Germany, North Rhine-Westphalia), RWE is building three new battery parks with a ...



RWE plans 1.2 GWh battery on German former coal plant

German energy company RWE is building a 600 MW/1.2 GWh BESS on the site of the former Westfalen coal-fired power plant in Hamm, North Rhine-Westphalia. The utility on ...

SPP utility to invest in 1.9GWh New Mexico, Texas ...

With SPS planning to invest approximately US\$634 million into the Plant X and Sagamore BESS additions, the utility hopes to recoup ...



What is the total investment of Kunshan energy storage power ...

The total investment of the Kunshan energy storage power station amounts to 1,000 million yuan, with 600 million yuan funded by various stakeholders, and the project aims ...



Contact Us

For inquiries, pricing, or partnerships:

<https://sccd-sk.eu>

Phone: +32 2 808 71 94

Email: info@sccd-sk.eu

Scan QR code for WhatsApp.

