



# Juba High Voltage Inverter





## Overview

---

With rated input power ranging between 3 to 7 kVA depending on the model, the welder features a no-load voltage of 76V and an output current range from 30 to 200A. It offers a duty cycle of up to 80%, ensuring prolonged use without overheating, and an efficiency rating of 85%.

With rated input power ranging between 3 to 7 kVA depending on the model, the welder features a no-load voltage of 76V and an output current range from 30 to 200A. It offers a duty cycle of up to 80%, ensuring prolonged use without overheating, and an efficiency rating of 85%.

● Adopt high frequency inverter technology, make welder of quick dynamic respond, energy saving, easy arc starting, high welding efficiency. ● Use MCU control circuit, could precisely adjust output parameters. ● Perfect auto protection function, could increase reliability. ● Output adjustment is of.

A Juba welding machine is a reliable and versatile tool designed for various metal joining applications across industrial, automotive, and DIY settings. Known for durability and consistent performance, Juba offers several welding technologies tailored to different materials, thicknesses, and skill.

What's your impression of this company?

Welding Machine, Plasma Cutting, TIG, MMA Welding Machine, MIG Welding Machines, DC Inverter Welding Machines, CO2 Welding Machine, AC Arc Welding Machine, AC/DC Inverter TIG/MMA Welder, MIG/Mag Inverter Welders Basic Info. Model NO. Company.

The DC INVERTER MMA WELDER MMA-160/MMA-200 is designed for efficient and robust welding performance, suitable for both industrial and home use. This welder operates on a power voltage of 230V and supports both single and dual input voltages of 120/230V, allowing versatility across different power.

DC Inverter Juba Welding Machine MMA-200 (MMA-IGBT Series) • Use IGBT technology, greatly improves the reliability of the machine. • High duty cycle, greatly improves the efficiency of the welder, energy saving. • Small size, stable and durable quality. • Easy to start arc, little spatter, stable.



Zhejiang Juba Mechanical&Electrical Co., Ltd. was established in 1988. It is a comprehensive welding equipment manufacturer integrating R&D, design and manufacturing. We specialize in the production of high-quality welding equipment, where the use of high-quality materials, excellent welding.



## Juba High Voltage Inverter

---



### [Buy juba inverter with free shipping](#)

Buy the best and latest juba inverter on banggood offer the quality juba inverter on sale with worldwide free shipping. , Shopping

### [DC Inverter MMA Portable Welding Machine \(MMA ...](#)

DC Inverter MMA Portable Welding Machine (MMA-200), Find Details and Price about Mma Welding Machines Mma Welder from DC Inverter MMA ...



### **JUBA TIG 200P**

Key attributes rated input voltage 220 V rated duty cycle @40°C (tig) 40% material / metal processed Carbon Steel, Stainless Steel output polarity AC/DC TIG max. load power capacity ...

### [DC INVERTER MMA WELDER MMA SERIES](#)

Good arc-starting and arc force, stable arc and little spatter. High welding quality, deep penetration. Auto protection of over-voltage and



over ...

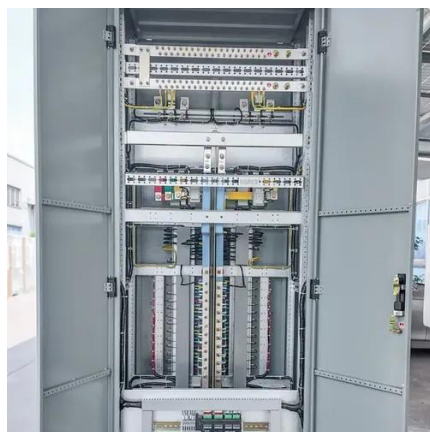


## Dc Inverter Juba Welding Machine Mma-200 (mma-igt Series), ...

JUBA's range of MMA welding machines offers DC inverter constant-current type, AC Arc transformer type and AC/DC type machines for all user groups from home users to extensive ...

## Best Selling JUBA Welding Machine

The Juba inverter welder uses advanced electronic circuitry to convert input power into a stable, high-frequency output. By replacing heavy transformers with compact ...



## [DC Inverter MMA Portable Welding Machine \(MMA-200\)](#)

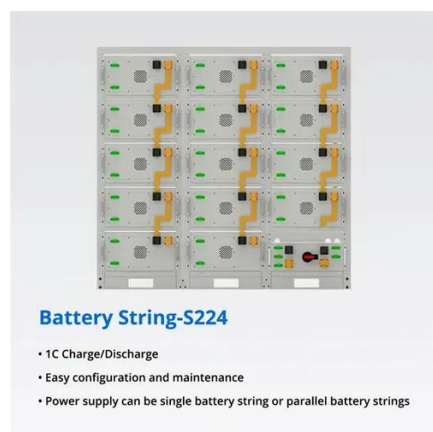
DC Inverter MMA Portable Welding Machine (MMA-200), Find Details and Price about Mma Welding Machines Mma Welder from DC Inverter MMA Portable Welding Machine (MMA-200) ...





## DC INVERTER MMA WELDER MMA SERIES OUTPUT ...

Good arc-starting and arc force, stable arc and little spatter. High welding quality, deep penetration. Auto protection of over-voltage and over-current. Be able to work continuously, it ...



## DC INVERTER MMA WELDER MMA SERIES

...

Adopt high frequency inverter technology, make welder of quick dynamic respond, energy saving, easy arc starting, high welding efficiency. Use ...

## **JUBA**

With rated input power ranging between 3 to 7 kVA depending on the model, the welder features a no-load voltage of 76V and an output current range from 30 to 200A. It offers a duty cycle of ...



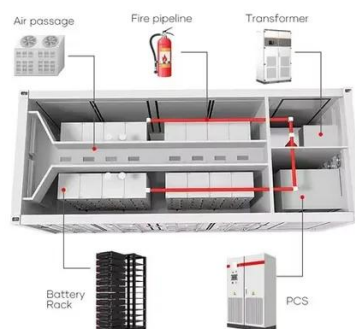
## **Dc Inverter Juba Welding Machine Mma-200 (mma-igt Series), High**

JUBA's range of MMA welding machines offers DC inverter constant-current type, AC Arc transformer type and AC/DC type machines for all user groups from home users to extensive ...



## [Zhejiang Juba Mechanical & Electrical Co., Ltd.](#)

We specialize in the production of high-quality welding equipment, where the use of high-quality materials, excellent welding capabilities and ease of ...



### **Best Selling JUBA Welding Machine**

The Juba inverter welder uses advanced electronic circuitry to convert input power into a stable, high-frequency output. By replacing heavy transformers with compact semiconductor-based ...



## [Zhejiang Juba Mechanical & Electrical Co., Ltd.](#)

We specialize in the production of high-quality welding equipment, where the use of high-quality materials, excellent welding capabilities and ease of use are our priorities. MCU control ...



### **high quality JUBA 280amp IGBT inverter mig mag welder 893024**

Taian E.S.K. International Co., Ltd. offers premium quality High Quality Juba 280amp Igbt Inverter Mig Mag Welder 893024 for B2B importers and distributors worldwide.





## **DC INVERTER MMA WELDER MMA SERIES POWER VOLTAGE 230V- Zhejiang Juba**

Adopt high frequency inverter technology, make welder of quick dynamic respond, energy saving, easy arc starting, high welding efficiency. Use MCU control circuit, could precisely adjust ...







## Contact Us

---

For inquiries, pricing, or partnerships:

<https://sccd-sk.eu>

Phone: +32 2 808 71 94

Email: [info@sccd-sk.eu](mailto:info@sccd-sk.eu)

Scan QR code for WhatsApp.

