



Laos solar module export tax rate





Overview

Laos applies a 5-10% export duty on photovoltaic modules, depending on product specifications and trade agreements. The tax framework aims to balance revenue generation with renewable energy sector growth.

Laos applies a 5-10% export duty on photovoltaic modules, depending on product specifications and trade agreements. The tax framework aims to balance revenue generation with renewable energy sector growth.

This guide breaks down the latest photovoltaic (PV) module export tax rates, compliance strategies, and market opportunities. Whether you're an exporter, investor, or renewable energy professional, you'll find actionable insights here. Laos applies a 5-10% export duty on photovoltaic modules.

e country. It is aimed at ensuring accurate, complete, and timely tax revenue collection into the state budget and contributing to other types of mineral products not specified in this Decree, export taxes shall be collected in accordance with the tax rates specified in Article 6 .

Their combined market share in the U.S. solar module sector soared to 29 percent in the three months following the second round of tariffs, up from less than 1 percent in 2023, according to a Reuters report. Industry analysts say that much of the solar manufacturing capacity in Southeast Asia was.

Become a VAT registrant in Laos via the online DTax system (or authorise a representative in Laos to do this on its behalf) and collect VAT from sales transactions as of 1 August 2024. Be aware that input VAT can't be deducted, and VAT refunds are only for commercial reasons (cancellation) and can.

This decree determines the principles and rules regarding the list of goods, export tax rates, and calculation methods to centralize and standardize the receipts of export taxes throughout the country. It is aimed at ensuring accurate, complete, and timely tax revenue collection into the state.

The tariff nomenclature of Lao PDR, which is based on ASEAN Harmonized Tariff Nomenclature (AHTN 2012), observes standard ASEAN import tariff rates varying from zero to 40 percent, excluding non-ASEAN countries. These published rates are



levied by the Customs Department. Excise tax rates range from. What are the tax rates in Laos?

These published rates are levied by the Customs Department. Excise tax rates range from 5-90 percent on many goods. The Lao government phased out turnover taxes over the last several years and replaced those with a Value Added Tax (VAT) regime, though the VAT remains inconsistently applied.

How does the Lao import tax system work?

The Lao import tax system aims to promote imports of inputs for investment and production while protecting domestic production and limiting luxury imports. Certain foreign investments are not obliged to pay import duties on imports of capital machinery and equipment for production.

What are the tax rates in Lao PDR?

Duty rates range between 0% and 40%, depending on whether the goods are from an ASEAN country or another country. Excise tax is levied on consumers of certain imported goods, domestic produced goods, and services within the territory of Lao PDR. The rates range from 5% to 100%.

What are the unique features of Lao PDR VAT?

One unique feature of the Lao PDR VAT is that VAT is imposed on the services rendered by overseas service providers to domestic service users. Domestic service users have an obligation to withhold VAT on the service fees paid to overseas service providers and pay the VAT to the tax authority. The rate of withholding VAT is 10%.



Laos solar module export tax rate

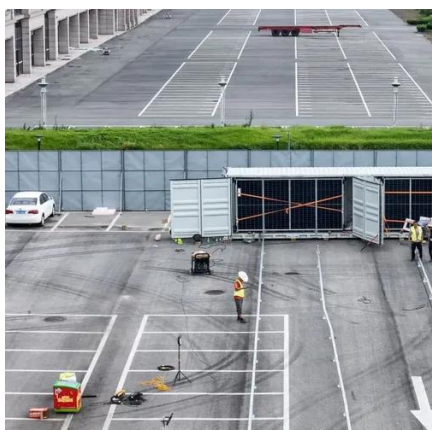


[US Solar Makers Seek AD/CVD Tariffs On India, ...](#)

After Cambodia, Malaysia, Vietnam and Thailand, it is now solar cell and module exports from India, Laos and Indonesia that are on ...

[How much is the export tax on solar panels?](#)

The export tax applied to solar panels is a critical aspect of international trade, influencing both manufacturers and consumers. These ...



Presidential Decree of the Lao People's Democratic Republic ...

The method of calculation export tax is to take the taxable value multiplies by the export tax rate for each type of goods as stated in Article 6 of this Decree.

Laos

Includes information on average tariff rates and types that U.S. firms should be aware of when exporting to the market.



[Indonesia and Laos solar exports surge to U.S. as ...](#)

U.S. imports of solar panels from Vietnam, Malaysia, Thailand, and Cambodia dropped 33 percent year-over-year in the nine months ...

[Laos SEZs: A Guide to Solar Manufacturing ...](#)

Duty-Free Operations: Both the import of production inputs and the export of finished solar modules are typically exempt from customs ...



Indonesia and Laos solar exports surge to U.S. as tariffs hit SE ...

U.S. imports of solar panels from Vietnam, Malaysia, Thailand, and Cambodia dropped 33 percent year-over-year in the nine months after the first round of tariffs in June ...





Understanding Laos Photovoltaic Module Export Tax Rates A ...

Laos applies a 5-10% export duty on photovoltaic modules, depending on product specifications and trade agreements. The tax framework aims to balance revenue generation with renewable ...



Lao PDR

Value-Added TaxImport DutiesExcise TaxesProperty TaxesPayroll TaxesSocial Security Scheme ContributionsEnvironmental TaxFees and Administrative ChargesUnder the Lao Tax Law, environmental tax is imposed on companies operating a business involving certain prescribed activities that are considered to cause pollution; damage the health and lives of any human, animal, or plant; or disrupt the balance of the ecosystem. The taxable amount and tax rate depend on the business activity. See more on [taxsummaries.pwc](#) Missing: solar moduleMust include: solar moduleLao Trade Portal

Provision of the President of the Lao People's Democratic ...

This decree determines the principles and rules regarding the list of goods, export tax rates, and calculation methods to centralize and standardize the receipts of export taxes throughout the ...

Provision of the President of the Lao People's Democratic ...

This decree determines the principles and rules regarding the list of goods, export tax rates, and calculation methods to centralize and standardize the receipts of export taxes throughout the ...





Laos SEZs: A Guide to Solar Manufacturing Investment

Duty-Free Operations: Both the import of production inputs and the export of finished solar modules are typically exempt from customs duties, enhancing cost ...



48V 100Ah

How much is the export tax on solar panels? , NenPower

The export tax applied to solar panels is a critical aspect of international trade, influencing both manufacturers and consumers. These tariffs serve as duties imposed by the ...



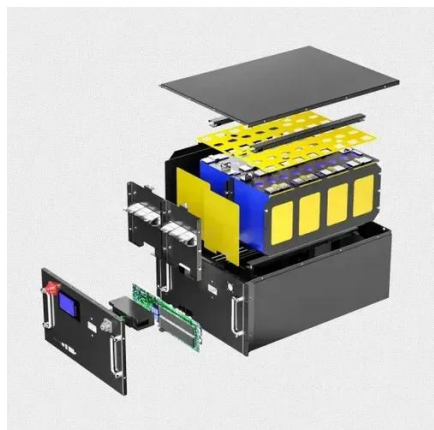
US Solar Makers Seek AD/CVD Tariffs On India, Laos, Indonesia

After Cambodia, Malaysia, Vietnam and Thailand, it is now solar cell and module exports from India, Laos and Indonesia that are on the firing line of a fresh AASMTTC AD/CVD ...

Lao PDR

Exports of goods are zero-rated, except the export of natural resources that are not finished goods, which are subject to 10% VAT. The conventional credit method is used to ...





How Much Does It Cost to Export Photovoltaic Panels to Laos?

Meta Description: Discover the complete cost analysis for exporting solar panels to Laos in 2025. Learn about tariffs, logistics, hidden fees, and strategies to optimize your export ...



Contact Us

For inquiries, pricing, or partnerships:

<https://sccd-sk.eu>

Phone: +32 2 808 71 94

Email: info@sccd-sk.eu

Scan QR code for WhatsApp.

