



Lesotho Distributed Energy Storage Cabinet Supplier





Lesotho Distributed Energy Storage Cabinet Supplier

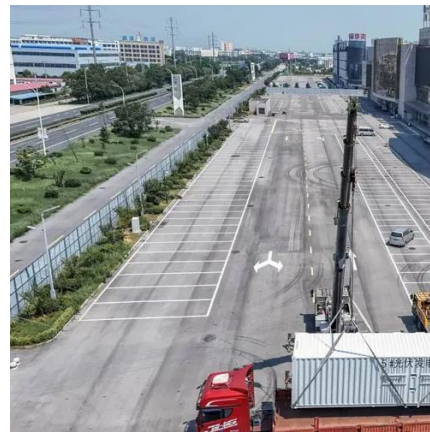


KNOW LESOTHO

Lesotho's blend of natural beauty, cultural richness, and historical significance makes it a unique destination and a country of enduring resilience and potential. Lesotho, officially the Kingdom ...

Lesotho

Visit the Definitions and Notes page to view a description of each topic.



Lesotho

Lesotho is situated in the Maloti Mountains and contains the highest peak in Southern Africa. [9] It has an area of over 30,000 km² (11,600 mi²) and has a population of about 2.3 million. Its ...

[Lesotho , Population, Size, Capital, Map, Language, People.](#)

Geographical and historical treatment of Lesotho, including maps and statistics as well as a survey of its people, economy, and government.



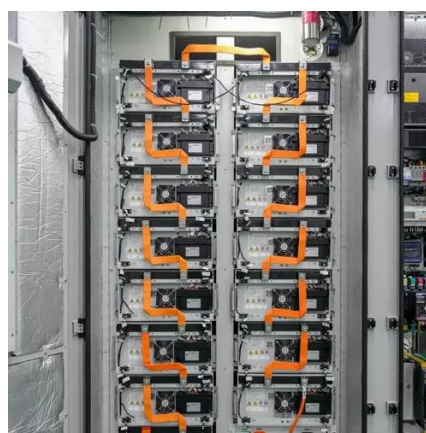
Lesotho

Lesotho is situated in the Maloti Mountains and contains the highest peak in Southern Africa. [9] It has an area of over 30,000 km² (11,600 sq mi) and has a population of about 2.3 million.



Lesotho

Lesotho is a small country in southern Africa, it is an enclave of South Africa. Its population is about 1,800,000. The capital of Lesotho is called Maseru. Lesotho has no coast on the sea nor ...



About Lesotho

Lesotho (formerly Basutoland) was constituted as a native state under British protection by a treaty signed with the native chief Moshoeshoe in 1843. It was annexed to Cape Colony in ...



Lesotho , Culture, Facts & Travel ,

Lesotho (Leh-SOO-too) is a landlocked country in the east-central part of the Republic of South Africa. Slightly larger than Maryland and slightly smaller than Belgium, Lesotho covers an area ...



About Lesotho

Lesotho is a democratic, sovereign, and independent country with the unique characteristic of being surrounded by its neighbour, the Republic of South Africa (RSA).

Lesotho

Lesotho, officially the Kingdom of Lesotho, is a landlocked country entirely surrounded by South Africa. The name Lesotho roughly translates into "the land of the people who speak Sotho."





Contact Us

For inquiries, pricing, or partnerships:

<https://sccd-sk.eu>

Phone: +32 2 808 71 94

Email: info@sccd-sk.eu

Scan QR code for WhatsApp.

