



Lithium iron phosphate battery cylindrical





Overview

• Cell voltage • Volumetric = 220 / (790 kJ/L) • Gravimetric energy density > 90 Wh/kg (> 320 J/g). Up to 160 Wh/kg (580 J/g). The latest version announced at the end of 2023, early 2024 made significant improvements in energy density from 180 up to 205 /kg without increasing production costs.



Lithium iron phosphate battery cylindrical



[LiFePO4 Battery Cell:Prismatic vs Pouch VS ...](#)

What is a LiFePO4 Cylindrical Lithium-ion Battery?
A LiFePO4 cylindrical lithium-ion battery is a type of rechargeable battery that ...

Cylindrical LiFePO₄ Cells

Premium cylindrical LiFePO₄ cells with 3,000+ cycle life, fast charging, and superior safety. Available in 18650, 26650, 32650 formats for industrial applications, energy storage, and ...



[Types of LiFePO4 Battery Cells: Cylindrical, ...](#)

Cylindrical LiFePO₄ cells are the most commonly used type of lithium iron phosphate batteries. They resemble the shape of traditional AA or AAA ...



Lithium iron phosphate battery

Overview Specifications History Comparison with other battery types Uses Recent developments See also



o Cell voltage o Volumetric energy density = 220 Wh/L (790 kJ/L) o Gravimetric energy density > 90 Wh/kg (> 320 J/g). Up to 160 Wh/kg (580 J/g). The latest version announced at the end of 2023, early 2024 made significant improvements in energy density from 180 up to 205 Wh/kg without increasing production costs.



Pouch vs. Prismatic vs. Cylindrical? Your Lithium Battery Cell Guide

What's the difference between pouch, prismatic, and cylindrical cells in lithium batteries? Read our guide to find the right battery cell type for your system.

LiFePO4 Battery Cell: Prismatic vs Pouch vs Cylindrical Lithium ...

What is a LiFePO4 Cylindrical Lithium-ion Battery? A LiFePO4 cylindrical lithium-ion battery is a type of rechargeable battery that features a cylindrical shape and uses Lithium Iron ...



Premium LiFePO4 Cylindrical Batteries

Lifepo4 cylindrical cells provide an exceptional energy density, allowing for longer usage times and reduced weight in applications such as electric vehicles and portable devices. This ...

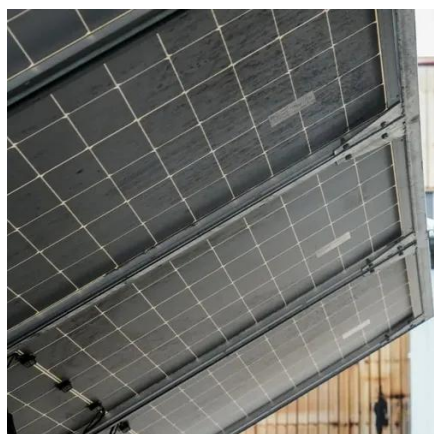


- ✓ IP65/IP55 OUTDOOR CABINET
- ✓ OUTDOOR MODULE CABINET
- ✓ OUTDOOR 5G BASE STATION CABINET
- ✓ WATERPROOF



Exploring LiFePO₄ Battery Cell Types: Cylindrical, Prismatic, and ...

Lithium iron phosphate (LiFePO₄) batteries are renowned for their exceptional safety, impressive cycle life, and superior thermal stability. They are available in three primary ...



[LiFe-Shenzhen Melasta Battery Co., Ltd](#)

The tubular cylindrical shape can withstand high internal pressures without collapsing. Melasta produces multiple sizes and capacities according to ...

Types of LiFePO₄ Battery Cells: Cylindrical, Prismatic, and Pouch

Cylindrical LiFePO₄ cells are the most commonly used type of lithium iron phosphate batteries. They resemble the shape of traditional AA or AAA batteries and are widely employed in ...



Cylindrical LiFePO₄ Cells

Premium cylindrical LiFePO₄ cells with 3,000+ cycle life, fast charging, and superior safety. Available in 18650, 26650, 32650 formats for industrial ...



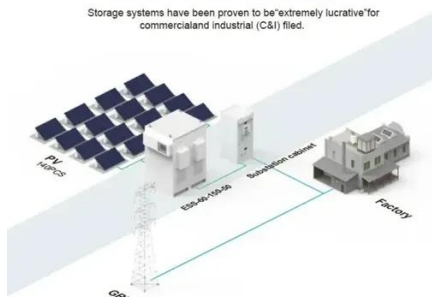
Lithium iron phosphate battery

Two modules are wired in parallel to create a single 3.25 V 1400 Ah battery pack with a capacity of 4.55 kWh. Volumetric energy density = 220 Wh / L (790 kJ/L) Gravimetric energy density > ...



BASIC APPLICATION

Storage systems have been proven to be "extremely lucrative" for commercial and industrial (C&I) filed.

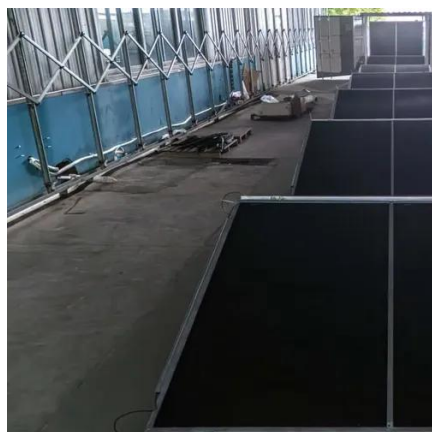


What is Cylindrical Lithium Iron Phosphate Battery? Uses

The Cylindrical Lithium Iron Phosphate (LiFePO₄) battery is a type of rechargeable battery known for its safety, longevity, and stability. It features a cylindrical shape, which ...

[LiFePO₄ Battery Types] Cylindrical vs. Prismatic ...

Cylindrical Cells: These batteries have a round shape and are commonly used in consumer electronics. Their robust design enhances ...



LiFe-Shenzhen Melasta Battery Co., Ltd

The tubular cylindrical shape can withstand high internal pressures without collapsing. Melasta produces multiple sizes and capacities according to the customer requirement.



[LiFePO4 Battery Types] Cylindrical vs. Prismatic vs. Pouch

Cylindrical Cells: These batteries have a round shape and are commonly used in consumer electronics. Their robust design enhances durability and heat dissipation, making ...





Contact Us

For inquiries, pricing, or partnerships:

<https://sccd-sk.eu>

Phone: +32 2 808 71 94

Email: info@sccd-sk.eu

Scan QR code for WhatsApp.

