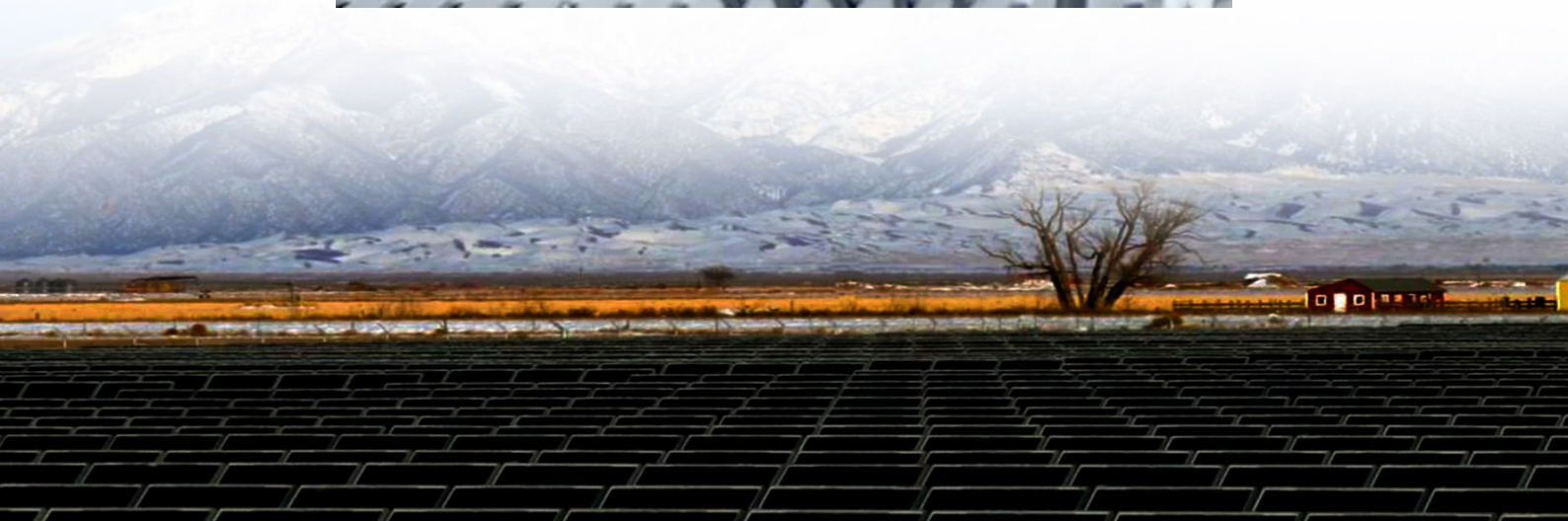
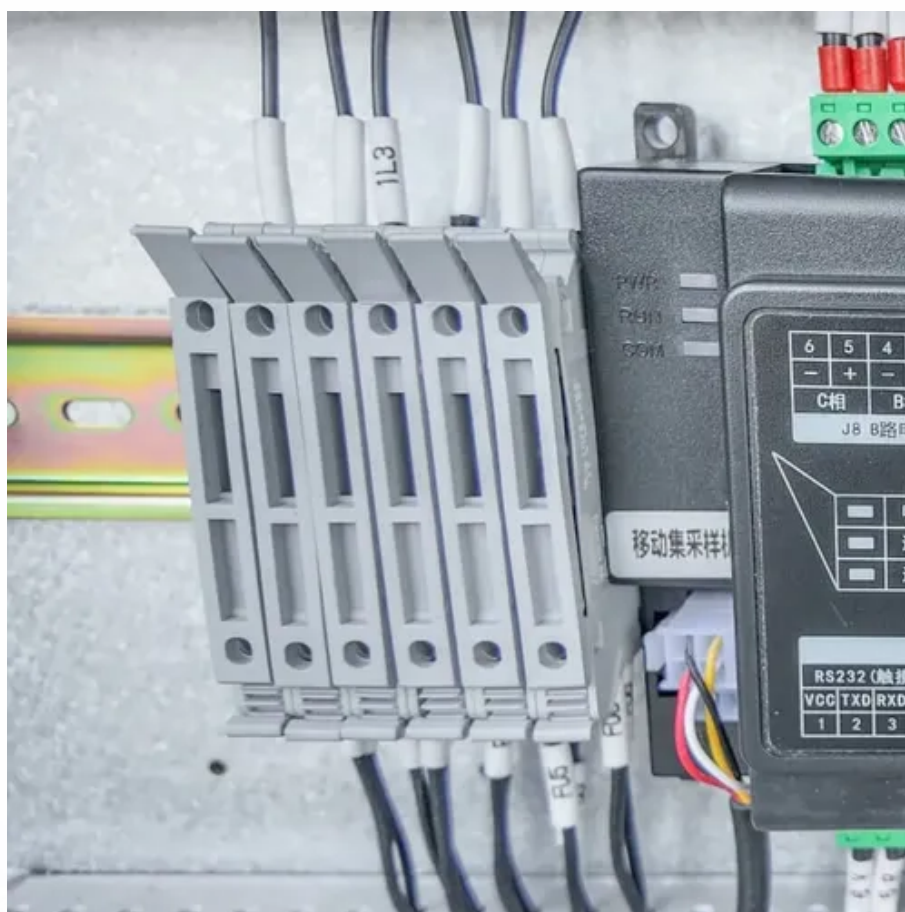




# Luxembourg s new energy storage solar container communication station battery equipment field





## Luxembourg s new energy storage solar container communication sta

---



### Luxembourg City, the capital

Luxembourg City is a European Capital teeming with tourist attractions. Built on the foundations of a formidable fortress, history and culture can be found at every turn in the city centre.

### Caves des Crémants Poll Fabaire

The winery team will welcome you by the shores of the Moselle and take you on a tour on which you can learn to appreciate the wide range of different Luxembourg wines and ...

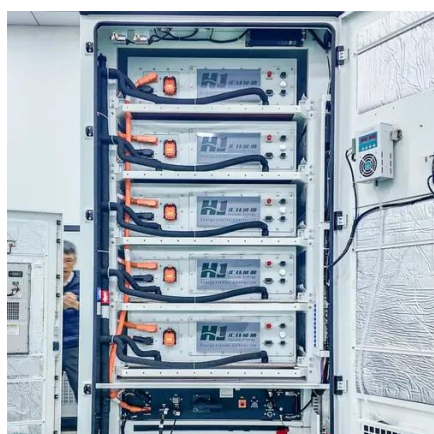


### Culture in Luxembourg

Luxembourg has over 60 art and history museums, galleries and cultural heritage spaces. Explore the country's industrial, viticulture or agricultural heritage or soak up the visual arts in iconic ...

### Food & Drink

Visit Luxembourg to discover food and drink made with high quality ingredients, flavours and regional knowhow. From the iconic Moselle still and sparkling wines to Mullerthal cheeses and ...



### [Luxembourg, old quarters and fortifications](#)

Immerse yourself in the living history of the UNESCO-protected Luxembourg Old Town.

## **Welcome to Luxembourg**

Discover Luxembourg, a small, multicultural country in the heart of Europe that is open to the world. You can travel to the capital city of the Grand Duchy of Luxembourg by train from ...



### [Practical information about Luxembourg](#)

Luxembourg at a glance. Here's a selection of useful information to make your trip to Luxembourg as easy and enjoyable as possible.





## Luxembourg City Tourist Office

Visit the City of Luxembourg and discover these tourist attractions steeped in history but nevertheless with a contemporary touch. Live a unique experience with more than 40 guided ...



## LuxembourgPass

Keen to discover exciting highlights in Luxembourg? The LuxembourgPass is your perfect travel companion. Buy your LuxembourgPass online!

## [UNESCO World Heritage Sites in Luxembourg](#)

Visit the romantic Grund district or the subterranean casemates carved out of the rock of the Bock promontory, which bear witness to Luxembourg's past as a heavily defended stronghold. The ...





## Contact Us

---

For inquiries, pricing, or partnerships:

<https://sccd-sk.eu>

Phone: +32 2 808 71 94

Email: [info@sccd-sk.eu](mailto:info@sccd-sk.eu)

Scan QR code for WhatsApp.

