



Maximum power of flywheel energy storage device





Overview

A flywheel-storage power system uses a flywheel for grid energy storage, (see Flywheel energy storage) and can be a comparatively small storage facility with a peak power of up to 20 MW.

A flywheel-storage power system uses a flywheel for grid energy storage, (see Flywheel energy storage) and can be a comparatively small storage facility with a peak power of up to 20 MW.

Flywheel energy storage (FES) works by spinning a rotor (flywheel) and maintaining the energy in the system as rotational energy. When energy is extracted from the system, the flywheel's rotational speed is reduced as a consequence of the principle of conservation of energy; adding energy to the.

Flywheel Energy Storage Systems (FESS) rely on a mechanical working principle: An electric motor is used to spin a rotor of high inertia up to 20,000-50,000 rpm. Electrical energy is thus converted to kinetic energy for storage. For discharging, the motor acts as a generator, braking the rotor to.

In their modern form, flywheel energy storage systems are standalone machines that absorb or provide electricity to an application. Flywheels are best suited for applications that require high power, a large number of charge discharge cycles, and extremely long calendar life. This chapter discusses.

Abstract: The flywheel energy storage system is a way to meet the high-power energy storage and energy/power conversion needs. Moreover, the flywheel can effectively assist the hybrid drivetrain to meet the vehicle's large peak power requirements. For the automotive use of flywheels, it is.

Energy storage systems (ESS) play an essential role in providing continuous and high-quality power. ESSs store intermittent renewable energy to create reliable micro-grids that run continuously and efficiently distribute electricity by balancing the supply and the load [1]. The existing energy.

The maximum energy stored in a flywheel follows this golden rule: Where: Your flywheel's material choice is like picking a superhero team: Fun fact: NASA's experimental flywheels use carbon nanotubes that could store 500 Wh/kg – enough



to power your Tesla while doing donuts [9]! Forget theory –.



Maximum power of flywheel energy storage device



DOE ESHB Chapter 7 Flywheels

Flywheel systems in service today demonstrate millisecond response times, energy storage up to 700 kWh per rotor, power output of up to 500 MW per rotor, and decades of service life.

Flywheel energy storage

One of the primary limits to flywheel design is the tensile strength of the material used for the rotor. Generally speaking, the stronger the disc, the faster it may be spun, and the more ...



The Ultimate Guide to Maximum Energy Stored in a Flywheel: ...

Welcome to the world of flywheel energy storage systems (FESS), where kinetic energy becomes the superhero of power management. The maximum energy stored in a ...

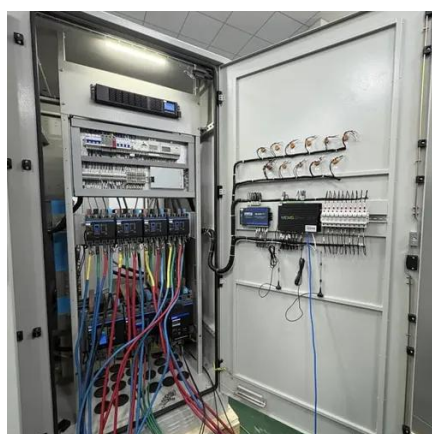
Flywheel energy storage

In 2010, Beacon Power began testing of their Smart Energy 25 (Gen 4) flywheel energy storage system at a wind farm in Tehachapi, California. The system was part of a wind power and ...



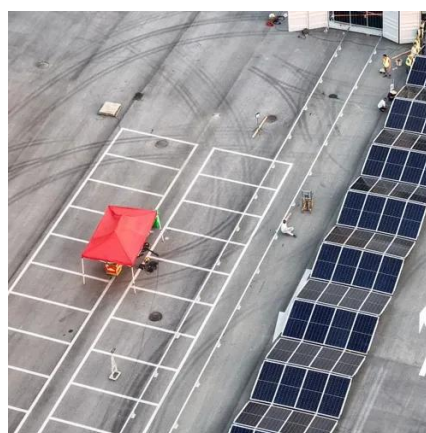
Flywheel Energy Storage

To improve their power density, Toodeji [127] proposes a novel design for a combined system in which supercapacitors are located inside the flywheel rotating disk. This allows exchanging ...



A review of flywheel energy storage systems: state of the art ...

Primary candidates for large-deployment capable, scalable solutions can be narrowed down to three: Li-ion batteries, supercapacitors, and flywheels. The lithium-ion ...



Technology: Flywheel Energy Storage

Flywheel Energy Storage Systems (FESS) rely on a mechanical working principle: An electric motor is used to spin a rotor of high inertia up to 20,000-50,000 rpm.





Flywheel storage power system

A flywheel-storage power system uses a flywheel for grid energy storage, (see Flywheel energy storage) and can be a comparatively small storage

...



Flywheel storage power system

A flywheel-storage power system uses a flywheel for grid energy storage, (see Flywheel energy storage) and can be a comparatively small storage facility with a peak power of up to 20 MW.

How much electricity can flywheel energy storage store

Flywheel energy storage systems can store significant amounts of energy, ranging from a few kilowatt-hours to a few megawatt-hours. The actual capacity, however, is ...



Design of flywheel energy storage device with high specific ...

For the automotive use of flywheels, it is particularly important to increase the moment of inertia of the flywheel as much as possible while keeping the overall mass increase low. In order to

...



Contact Us

For inquiries, pricing, or partnerships:

<https://sccd-sk.eu>

Phone: +32 2 808 71 94

Email: info@sccd-sk.eu

Scan QR code for WhatsApp.

