



# Mobile Base Station Battery Base Station





## Overview

---

Telecom batteries refer to batteries that are used as a backup power source for wireless communications base stations. In the event that an external power source cannot be used, the telecom battery can provide a continuous power supply for the communication base station.

Telecom batteries refer to batteries that are used as a backup power source for wireless communications base stations. In the event that an external power source cannot be used, the telecom battery can provide a continuous power supply for the communication base station.

While any 12V car battery might technically power your mobile base station, selecting the right battery for optimal performance and longevity requires understanding a few key factors. Unlike typical car batteries designed for short bursts of high power, base stations demand a consistent, lower.

Telecom base stations are the backbone of modern communication networks, enabling seamless connectivity for mobile telephony, Internet services and emergency communications. These Telecom base stations are highly dependent on a stable power supply for efficient operation. However, power outages.

Among various battery technologies, Lithium Iron Phosphate (LiFePO<sub>4</sub>) batteries stand out as the ideal choice for telecom base station backup power due to their high safety, long lifespan, and excellent thermal stability. This guide outlines the design considerations for a 48V 100Ah LiFePO<sub>4</sub> battery.

A telecom battery backup system is a comprehensive portfolio of energy storage batteries used as backup power for base stations to ensure a reliable and stable power supply. As we are entering the 5G era and the energy consumption of 5G base stations has been substantially increasing, this system.

High-capacity batteries ensure continuous service, especially for critical systems like 5G networks that demand low latency and high availability. ESTEL battery backup systems excel in meeting these challenges, offering an uninterruptible power supply tailored to the needs of telecommunications.

In the modern world, uninterrupted communication is critical. Our Telecom Base

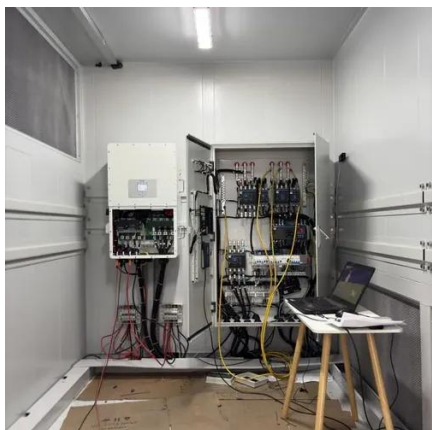


Station Battery Solutions are designed to provide reliable power support for Telecommunications base stations, ensuring continuous operation and optimal performance. Contact us today to learn more about how our Base.



## Mobile Base Station Battery Base Station

---

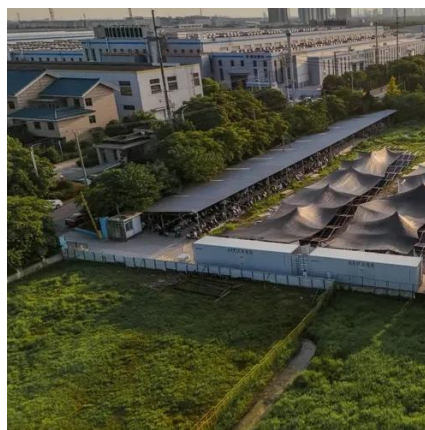


### How to Select the Best ESTEL Battery Backup for Base Stations

Choose the best telecom battery backup systems by evaluating capacity, battery type, environmental adaptability, maintenance, and scalability for base stations.

### [Choosing a 12V Battery for Your Mobile Base Station](#)

For most mobile base station applications, AGM or Gel batteries offer a good balance of performance, maintenance, and cost. Li-ion batteries are a premium option with superior ...



### [What is the purpose of batteries at telecom base stations?](#)

Telecom batteries refer to batteries that are used as a backup power source for wireless communications base stations. In the event that an external power source cannot be used, the ...

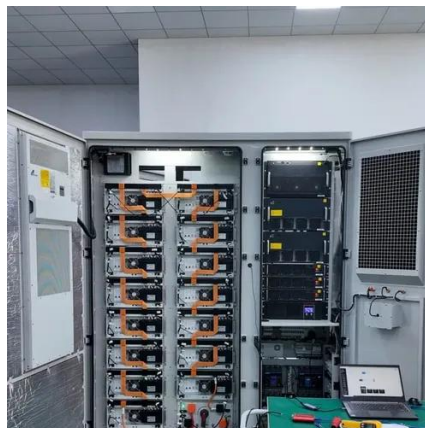
### Base Station Energy Storage

A base station energy storage system is a compact, modular battery solution designed to ensure uninterrupted power supply for telecom base stations. It supports stable operations during





grid ...



## Telecom Base Station Battery

Our Telecom Base Station Battery Solutions are designed to provide reliable power support for Telecommunications base stations, ensuring continuous operation and optimal performance.



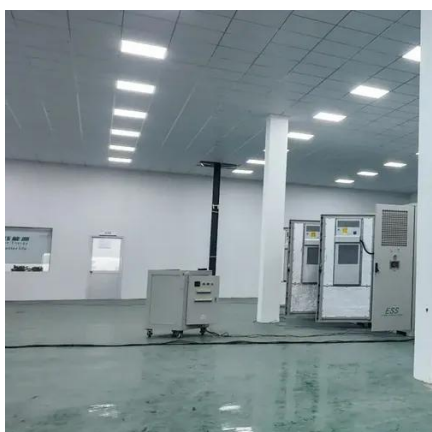
## 5G Micro Base Station Lithium Battery Backup

Power your 5G micro base station with this 51.2V lithium battery. Ideal for telecom backup and remote tower use. Long life, compact, and BMS ...



## Communication Base Station Backup Battery

When natural disasters cut off power grids, when extreme weather threatens power supply safety, our communication backup power system with intelligent charge/discharge management and ...





## [5G Micro Base Station Lithium Battery Backup](#)

Power your 5G micro base station with this 51.2V lithium battery. Ideal for telecom backup and remote tower use. Long life, compact, and BMS-equipped.



## **Telecom Base Station Battery**

Our Telecom Base Station Battery Solutions are designed to provide reliable power support for Telecommunications base stations, ensuring ...

## [Telecom Battery Backup System , Sunwoda Energy](#)

A telecom battery backup system is a comprehensive portfolio of energy storage batteries used as backup power for base stations to ensure a reliable and stable power supply.



## [What is the purpose of batteries at telecom base ...](#)

Telecom batteries refer to batteries that are used as a backup power source for wireless communications base stations. In the event that an external ...



## Telecom Base Station Backup Power Solution: ...

Discover the 48V 100Ah LiFePO4 battery pack for telecom base stations: safe, long-lasting, and eco-friendly. Optimize reliability with ...



## **Mobile Base Station Energy Storage Principle: How It Keeps You**

Meet the unsung hero of modern connectivity - mobile base station energy storage systems. These technological marvels work like giant power banks for cell towers, ensuring ...

## **Telecom Base Station Backup Power Solution: Design Guide for ...**

Discover the 48V 100Ah LiFePO4 battery pack for telecom base stations: safe, long-lasting, and eco-friendly. Optimize reliability with our design guide.





## Contact Us

---

For inquiries, pricing, or partnerships:

<https://sccd-sk.eu>

Phone: +32 2 808 71 94

Email: [info@sccd-sk.eu](mailto:info@sccd-sk.eu)

Scan QR code for WhatsApp.

