



Monocrystalline cell double glass module





Overview

Assembled with 11BB bifacial PERCIUM cells and gapless ribbon connection technology, these double glass modules have the capability of converting the incident light from the rear side together with the front side into electricity, providing higher output power, lower temperature.

Assembled with 11BB bifacial PERCIUM cells and gapless ribbon connection technology, these double glass modules have the capability of converting the incident light from the rear side together with the front side into electricity, providing higher output power, lower temperature.

Assembled with 11BB bifacial PERCIUM cells and gapless ribbon connection technology, these double glass modules have the capability of converting the incident light from the rear side together with the front side into electricity, providing higher output power, lower temperature coefficient, less.

The core hardware of these modules consists of monocrystalline silicon cells, which are known for their high efficiency and longevity. Each module features half-sized cells, which reduce resistive losses and improve performance under shading conditions. The bifacial design incorporates transparent.

STC: Irrdiance 1000W/m², Cell Temperature 25°C, Air Mass AM1.5. NOCT: Irradiance at 800W/m², Ambient Temperature 20°C, Wind Speed 1m/s. *Measuring tolerance: $\pm 3\%$. Power Bifaciality: $80 \pm 5\%$. CAUTION: READ SAFETY AND INSTALLATION INSTRUCTIONS BEFORE USING THE PRODUCT. 2024 Trina Solar Co.,Ltd. All.

Founded in 1988, ZNShine solar is a world's leading high-tech PV module manufacturer. With the advanced production lines, the company boasts module capacity of 10 GW. Bloomberg has listed ZNShine as a global Tier 1 PV module maker. Today Znshine has distributed its sales to more than 60 countries.

The monocrystalline half-cell bifacial double-glass module market is experiencing robust growth, driven by increasing demand for high-efficiency solar energy solutions. This technology offers several advantages over traditional modules, including higher power output due to bifaciality (capturing.



High Efficiency Monocrystalline Perc Bifacial Double Glass Photovoltaic Solar Panel Module Based on 182mm Solar Cell Mogen Solar MG10 Perc monocrystalline single glass 540-555Watt photovoltaic solar panel. The new series integrates 182mm silicon wafers, with perc, multi-busbar cell technology and.



Monocrystalline cell double glass module



Monocrystalline Half-Cell Bifacial Double Glass Module Strategic

This report analyzes the monocrystalline half-cell bifacial double glass module market, a sector experiencing significant growth driven by increasing demand for high ...

[ZXM7-UHLDD144
182_2278×1134\(30×32NH\)_555 ...](#)

Bloomberg has listed ZNShine as a global Tier 1 PV module maker. Today Znshine has distributed its sales to more than 60 countries around the globe.



[Mono 565W MBB Bifacial Mono PERC Half-cell Double ...](#)

Assembled with 11BB bifacial PERCIUM cells and gapless ribbon connection technology, these double glass modules have the capability of converting the incident light from the rear side ...

[Double glass solar module , Maysun Solar](#)

Double glass modules use an innovative design with glass on both sides, offering higher photovoltaic conversion efficiency and better environmental characteristics.

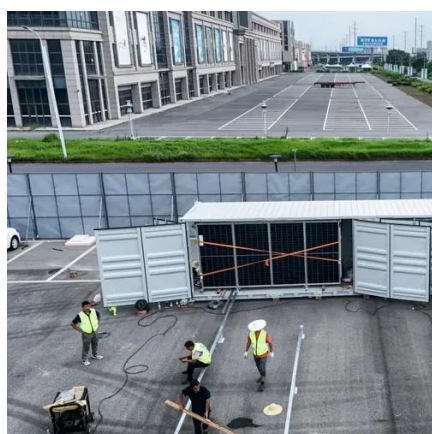


114KWh ESS



Vertex_NEG21C.20_EN_2024_APAC_A_web

STC: Irrdiance 1000W/m², Cell Temperature 25oC, Air Mass AM1.5. NOCT: Irradiance at 800W/m, Ambient Temperature 20°C, Wind Speed 1m/s.
*Measuring tolerance: ±3%. Power ...



How Monocrystalline Half-Cell Bifacial Double Glass Module ...

The Monocrystalline Half-Cell Bifacial Double Glass Module is transforming solar energy systems with its innovative design and enhanced efficiency.



Dual-glass PERC bifacial monocrystalline solar module JNBM144

MBB and half-cell design to reduce shadow effects, improve module reliability and reduces loss. The dual-glass structure effectively reduces the risk of cell cracking and improves the ...



Vertex N 620W+ Bifacial , Trinasolar

Our Vertex N-type modules are designed to work perfectly as part of a larger utility or residential solar system. Whether you already have an existing network or are starting a project, the N ...



Perc 550W 540W single glass / Dual glass bifacial mono solar module

Mogen Solar MG10 Perc monocrystalline single glass 540-555Watt photovoltaic solar panel. The new series integrates 182mm silicon wafers, with perc, multi-busbar cell technology and high ...

United States Monocrystalline Half-Cell Bifacial Double Glass Module

Monocrystalline half-cell bifacial modules, featuring double glass construction, offer superior performance, longevity, and aesthetic appeal, making them highly attractive for





Contact Us

For inquiries, pricing, or partnerships:

<https://sccd-sk.eu>

Phone: +32 2 808 71 94

Email: info@sccd-sk.eu

Scan QR code for WhatsApp.

