



New Energy Storage Charging Pile Base Station





New Energy Storage Charging Pile Base Station



CSS

This is to show new line and return carriage in HTML. Then you don't need to do it explicitly. You can do it in CSS by setting the white-space attribute pre-line value.

[Refresh powerBI data with additional column](#)

I have built a powerBI dashboard with data source from Datalake Gen2. I am trying to add new column into my original data source. How to refresh from PowerBI side without ...



[When to use "new" and when not to, in C++?](#)

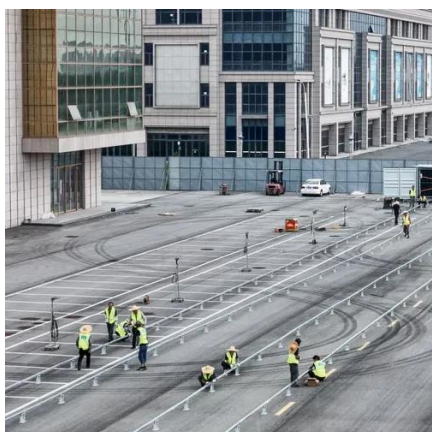
You should use new when you wish an object to remain in existence until you delete it. If you do not use new then the object will be destroyed when it goes out of scope.

[Difference between 'new operator' and 'operator new'?](#)

A new expression is the whole phrase that begins with new. So what do you call just the "new" part of it? If it's wrong to call that the new operator,



then we should not call ...



url

I was searching on this link before finding this answer. I did not find the solution in the link because I was looking for "newline" or "new line" instead of "line feed".

html

0 The target attribute of a link forces the browser to open the destination page in a new browser window. Using _blank as a target value will spawn a new window every time ...



[Find and replace with a newline in Visual Studio Code](#)

I am trying out the new Microsoft Visual Studio Code editor in Linux Fedora environment. I would like to know how to replace new line (n) in place of some other text. For ...



What is the 'new' keyword in JavaScript?

The new keyword in JavaScript can be quite confusing when it is first encountered, as people tend to think that JavaScript is not an object-oriented programming language. What is it? What ...



c#

I have a linq query `var x = (from t in types select t).GroupBy(g => g.Type)` which groups objects by their type, as a result I want to have single new object containing all of the ...



How do I push a new local branch to a remote Git repository and ...

How do I: Create a local branch from another branch (via `git branch` or `git checkout -b`). Push the local branch to the remote repository (i.e. publish), but make it trackable so that ...





Contact Us

For inquiries, pricing, or partnerships:

<https://sccd-sk.eu>

Phone: +32 2 808 71 94

Email: info@sccd-sk.eu

Scan QR code for WhatsApp.

