



One watt of solar panel equals how many square meters





Overview

A standard solar panel today measures about 1.6 square meters and typically produces between 250 to 400 watts. Therefore, calculating the area per watt gives insight into how much space is necessary for energy generation.

A standard solar panel today measures about 1.6 square meters and typically produces between 250 to 400 watts. Therefore, calculating the area per watt gives insight into how much space is necessary for energy generation.

One watt solar panel converts solar energy into electrical energy that occupies approximately 0.1 square meters, 2. The size of a panel may vary depending on its type and efficiency, 3. Higher efficiency panels can generate more power in a smaller footprint, 4. When considering space for.

Solar panels have become a cornerstone of renewable energy, but many wonder: How much power can a single square meter of solar panels actually produce?

Let's break down the science behind photovoltaic efficiency. Under optimal conditions (5 peak sun hours): At noon under direct sunlight: *Note: 1m².

This metric shows how much power a solar panel produces per square meter of surface area under standard conditions. By knowing W/m, you can: Install solar panels and maximize your energy output! What is Solar Panel Efficiency?

Solar panel efficiency measures how well a panel converts sunlight into.

The sunlight received per square meter is termed solar irradiance. As per the recent measurements done by NASA, the average intensity of solar energy that reaches the top atmosphere is about 1,360 watts per square meter. You can calculate the solar power per square meter with the following.

One of the key metrics is "watts per square meter." The kilowatt hours to amp hours calculator then converts the energy output of solar panels from kilowatt-hours to ampere-hours, a unit that's more practical when designing and evaluating energy storage systems like batteries. This article will.

How many watts per square meter is a solar panel?



1. The average power output of a solar panel is approximately 150 to 400 watts per square meter, depending on various factors including the technology used and the angle of sunlight. 2. Most commonly, solar panels can convert about 15% to 22% of.



One watt of solar panel equals how many square meters



[Solar Power Per Square Meter Calculator](#)

Calculate solar panel energy output per square meter. Get accurate daily, monthly, and annual production estimates based on location, panel specs, and system losses. Supports m^2 and ft^2 , ...

Solar Panel Output Per Square Meter

Discover how much electricity solar panels generate per square meter, explore efficiency factors, technology comparisons, and future innovations in photovoltaic energy.



[Solar Panel Watts Per Square Meter Explained](#)

Solar panel watts per square meter (W/m^2) measures the power output of a solar panel based on its size. Compare solar panels to see which ...

Solar Panel Output Per Square Meter

Discover how much electricity solar panels generate per square meter, explore efficiency factors, technology comparisons, and ...



Solar Panel Wattage Explained: How Many Watts ...

On average, a solar panel produces around 150 to 200 watts per square meter. This can vary due to:
Example: A 1.7 m² panel with 20% ...



How many watts per square meter is a solar panel? , NenPower

The average power output of a solar panel is approximately 150 to 400 watts per square meter, depending on various factors including the technology used and the angle of ...



Solar Panel Wattage Explained: How Many Watts Do You Need?

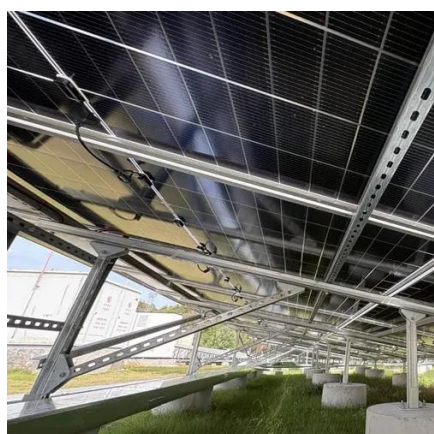
On average, a solar panel produces around 150 to 200 watts per square meter. This can vary due to:
Example: A 1.7 m² panel with 20% efficiency will produce about 340W in full ...





Solar Panel Watts Per Square Meter Explained

Solar panel watts per square meter (W/m) measures the power output of a solar panel based on its size. Compare solar panels to see which generates most electricity per square meter.

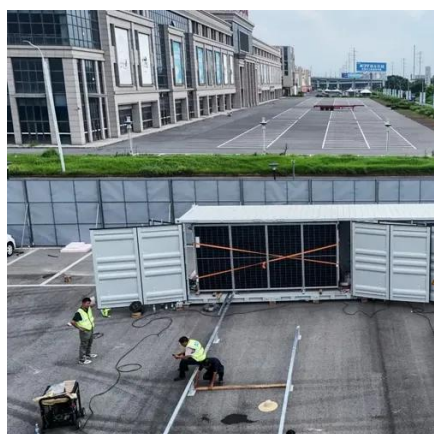
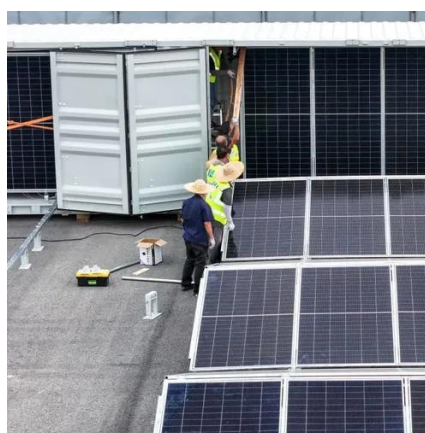


How many watts per square meter is a solar ...

The average power output of a solar panel is approximately 150 to 400 watts per square meter, depending on various factors ...

Solar Power per Square Meter Calculator

The amount of solar intensity received by the solar panels is measured in terms of square per meter. The sunlight received per square meter is termed solar irradiance. As per ...



How many square meters is one watt solar panel , NenPower

By dividing the area of the panel by its wattage capacity, one can ascertain that approximately 0.1 to 0.16 square meters are used per watt. Understanding the size of solar ...



Solar Panels Watts per Square Meter

When planning a solar installation, knowing the watts per square meter rating of the panels can help you determine how many panels you need to meet your energy requirements.

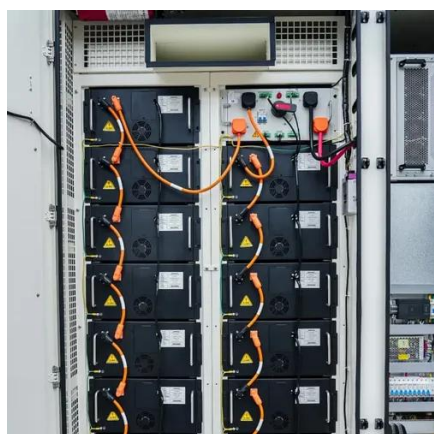


[Solar Power per Square Meter Calculator](#)

When planning a solar installation, knowing the watts per square meter rating of the panels can help you determine how many ...

[Watts Per Square Meter Solar Panel - The Go-to Guide](#)

The formula to calculate the solar panel output and how much energy solar panels produce (in watts) using watts per square meter is as follows:
Solar Panel Output (W) = Watts ...



[Solar Energy Generation Per Square Metre: A Complete Guide](#)

On a clear day, each square metre of the Earth's surface receives approximately 1,000 watts of solar energy, also known as 1 kW/m². This energy can be converted into ...



Watts Per Square Meter Solar Panel - The Go-to ...

The formula to calculate the solar panel output and how much energy solar panels produce (in watts) using watts per square meter is as ...



Solar Energy Generation Per Square Metre: A ...

On a clear day, each square metre of the Earth's surface receives approximately 1,000 watts of solar energy, also known as 1 ...





Contact Us

For inquiries, pricing, or partnerships:

<https://sccd-sk.eu>

Phone: +32 2 808 71 94

Email: info@sccd-sk.eu

Scan QR code for WhatsApp.

