



Panama energy storage lithium iron phosphate battery wholesale





Panama energy storage lithium iron phosphate battery wholesale

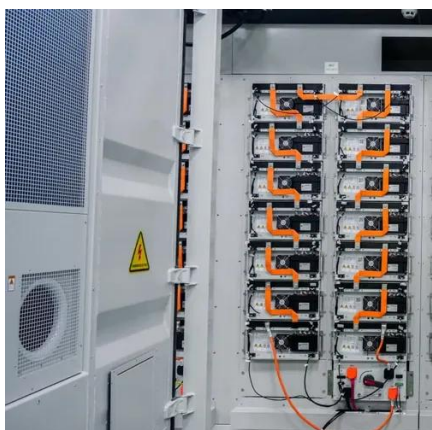


Panama

Visit the Definitions and Notes page to view a description of each topic.

[Welcome to Panamá , Places to Visit & Things to do](#)

Explore our diverse culture, our wildlife, and live thrilling experiences all on one trip. Cross from the Pacific to the Caribbean in just two hours through the Panama Canal. Connect with seven ...



Panama , Culture, Facts & Travel ,

Panama, the country -- often-called "The Bridge between Two Worlds" -- is a crossroads of world culture and international trade. Panama -- the city -- resembles much ...

Panama

Panama, [a] officially the Republic of Panama, [b] is a country located at the southern end of Central America, bordering South America. It is bordered by Costa Rica to the west, Colombia ...



Panama

Panama, officially the Republic of Panama, is a country located at the southern end of Central America, bordering South America. It is bordered by Costa Rica to



[Panama , History, Map, Flag, Capital, Population, & Facts](#)

Geographical and historical treatment of Panama, including maps and statistics as well as a survey of its people, economy, and government.



Panama

Panama, officially the Republic of Panama (Spanish: República de Panamá), is the southernmost country of Central America. Situated on an isthmus, Panama is a transcontinental nation which ...





[Panama International Travel Information](#)

International Parental Child Abduction Review information about International Parental Child Abduction in Panama. For additional IPCA-related information, please see the ...



[18 things to know before going to Panama](#)

It sits at the crossroads of the Americas, connecting two oceans, and beyond its cosmopolitan capital and legendary canal, Panama is a biodiversity hotspot. Did you also ...

Republic of Panama

Panama is bordered by Colombia and Costa Rica. The country is best known for the Panama Canal, a man-made waterway, opened in 1914. The canal cuts through the country, linking the ...





Contact Us

For inquiries, pricing, or partnerships:

<https://sccd-sk.eu>

Phone: +32 2 808 71 94

Email: info@sccd-sk.eu

Scan QR code for WhatsApp.

