

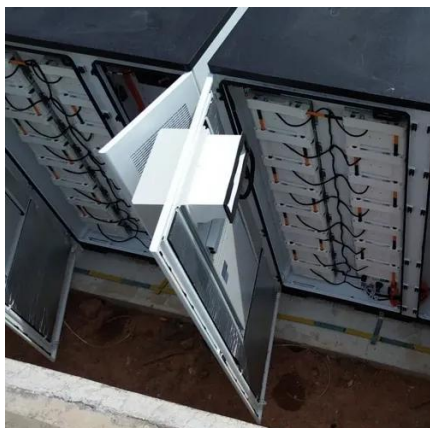


# Paraguay s solar power generation





## Paraguay s solar power generation

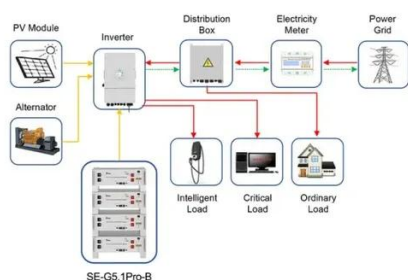


### [Paraguay , History, Geography, Maps, & Facts , Britannica](#)

Paraguay is a landlocked country in south-central South America. Its name is said to derive from the Guaraní word meaning "river that gives birth to the sea," and its national ...

### [Paraguay , Culture, Facts & Travel ,](#)

Paraguay in depth country profile. Unique hard to find content on Paraguay. Includes customs, culture, history, geography, economy current events, photos, video, and more.



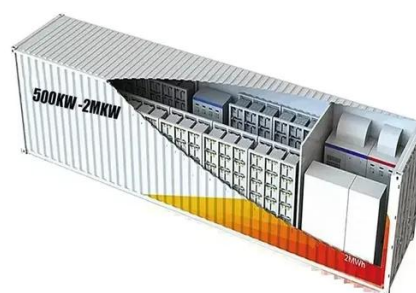
Application scenarios of energy storage battery products

### Paraguay Maps & Facts

The landlocked nation of Paraguay covering an area of 406,752 sq. km (157,050 sq mi), is located in Central South America. As observed on the physical map of the country, ...

## Paraguay

Paraguay[c] (Guarani: Paraguái), officially the Republic of Paraguay, [d] is a landlocked country located in the central region of South America. It borders Bolivia to the northwest and north, ...



## Paraguay

Paraguay, officially the Republic of Paraguay, is a landlocked country located in the center of South America. It lies on both banks of the Paraguay River, bordering Argentina to the south ...

## Guide to Paraguay

If you're among the many who have never been, here's what you need to know before your visit to Paraguay. Paraguay is one of the best countries to visit next year. See our ...



## Paraguay

Paraguay[d] (Guarani: Paraguái), officially the Republic of Paraguay, [e] is a landlocked country located in the central region of South America. It borders Bolivia to the northwest and north, ...





## Paraguay

Visit the Definitions and Notes page to view a description of each topic.



## Paraguay

Paraguay, officially the Republic of Paraguay (Spanish: República del Paraguay), is a small country in South America. It is landlocked, meaning that it is not next to the ocean.

## Paraguay

Destination Paraguay, a virtual guide to the landlocked country in central South America, bordered by Bolivia in northwest. The Pilcomayo river, a tributary of the Paraguay river, they ...





## Contact Us

---

For inquiries, pricing, or partnerships:

<https://sccd-sk.eu>

Phone: +32 2 808 71 94

Email: [info@sccd-sk.eu](mailto:info@sccd-sk.eu)

Scan QR code for WhatsApp.

