



# Payment for 500kWh energy storage container for wastewater treatment plants



✓ IP65/IP55 OUTDOOR CABINET

✓ OUTDOOR MODULE CABINET

✓ OUTDOOR ENERGY STORAGE CABINET

✓ 19 INCH





## Payment for 500kWh energy storage container for wastewater treatment

---

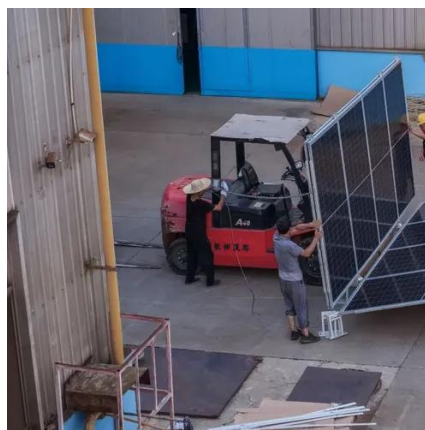


### Gmail

Gmail is a free, secure email service with advanced features like spam protection, encryption, and integration with Google Workspace tools.

### Sign in

Not your computer? Use a private browsing window to sign in. Learn more about using Guest mode



### [How to Sign Into Your Gmail Account: Computer, Android, iOS](#)

Do you need to sign into your Gmail account? If you have a Google account, you can access Gmail from login easily. Otherwise, you can directly use the Gmail website or app ...



### Payment Lookup

If you have made a payment through Direct Pay you can use this feature to view your payment details and status. You can modify or cancel your payment until 11:45 P.M. ET two business ...



We would like to show you a description here but the site won't allow us.



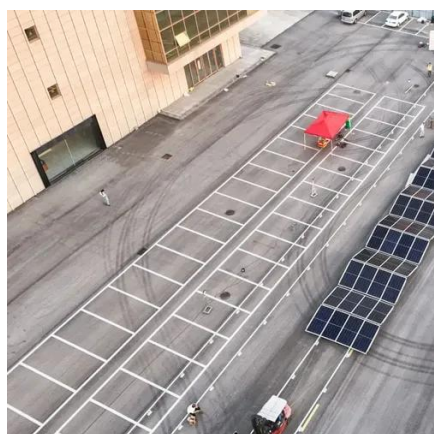
## Topic no. 202, Tax payment options

Learn how to make a tax payment and the details of several options you may qualify for if you can't pay in full right now.



### [Online account for individuals , Internal Revenue Service](#)

Sign in or create an online account. Review the amount you owe, balance for each tax year, payment history, tax records and more.





## IRS payment plan options - Fast, easy and secure

Most taxpayers qualify for an IRS payment plan (or installment agreement) and can use the Online Payment Agreement (OPA) to set it up to pay off an outstanding balance over time.



## **Gmail**

Gmail is email that's intuitive, efficient, and useful. 15 GB of storage, less spam, and mobile access.

## **Gmail: Private and secure email at no cost , Google Workspace**

Discover how Gmail keeps your account & emails encrypted, private and under your control with the largest secure email service in the world.



## Pay your taxes by debit or credit card or digital wallet

The IRS uses third party payment processors for payments by debit and credit card. It's safe and secure; your information is used solely to process your payment.





## [Switch to Gmail - About Gmail - Google](#)

To sign-in to Gmail, visit gmail on your computer or on your phone. If it's your first time using Gmail, you may want to check out this Getting Started guide.



## About Gmail

Gmail goes beyond ordinary email. You can video chat with a friend, ping a colleague, or give someone a ring - all without leaving your inbox. The ease and simplicity of Gmail is available ...

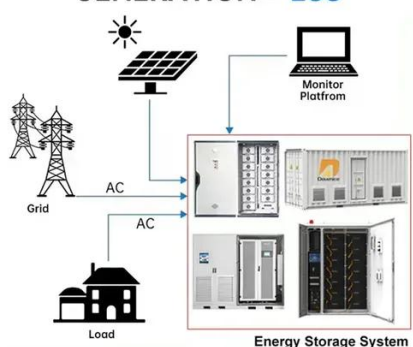


## Gmail

Gmail is a mailbox provider by Google. It is the largest email service worldwide, with 1.8 billion users. [1] It is accessible via a web browser (webmail), mobile app, or through third-party email ...



## DISTRIBUTED PV GENERATION + ESS



## Set Up and Use Email with Gmail

Learn how to add accounts, send emails, and manage inboxes in Gmail.



## Paying your taxes

IRS offers various electronic payment options for paying federal taxes and user fees. These options are convenient, safe, and secure, and some of them are free.



## Online payment agreement application , Internal Revenue Service

You can view details of your current payment plan (type of agreement, due dates, and amount you need to pay) by logging into the online payment agreement tool using the ...

## Direct Pay with bank account

If you've never filed taxes or it's been over 6 years since you filed, you can pay another way. Business tax payments Pay balance due, federal tax deposits and other federal income tax. ...



## IRS payment options

Though interest and late-payment penalties continue to accrue on any unpaid taxes after July 15, the failure to pay tax penalty rate is cut in half while an installment agreement is in effect.





## Sign in to Gmail

To open Gmail, you can sign in from a computer or add your account to the Gmail app on your phone or tablet. Once you're signed in, open your inbox to check your mail.



## Tax Information

Information about payment types can be found by clicking the help icon (?). If you are making more than one type of payment or making payments for more than one tax year, submit each ...





## Contact Us

---

For inquiries, pricing, or partnerships:

<https://sccd-sk.eu>

Phone: +32 2 808 71 94

Email: [info@sccd-sk.eu](mailto:info@sccd-sk.eu)

Scan QR code for WhatsApp.

