



# Popular PV panel sizes





## Overview

---

The size of solar panels with the same cell count varies slightly, depending on the brand and model. Still, most 60-cell solar panels have a size of 39" X 66" and most 72-cell solar panels have sizes of around 39" X 77". However, panels with cell counts of 96, 120, and 144 may.

The size of solar panels with the same cell count varies slightly, depending on the brand and model. Still, most 60-cell solar panels have a size of 39" X 66" and most 72-cell solar panels have sizes of around 39" X 77". However, panels with cell counts of 96, 120, and 144 may.

The size of solar panels with the same cell count varies slightly, depending on the brand and model. Still, most 60-cell solar panels have a size of 39" X 66" and most 72-cell solar panels have sizes of around 39" X 77". However, panels with cell counts of 96, 120, and 144 may have different sizes.

Panel "Size" vs Physical Dimensions: The most critical distinction for homeowners is that solar panel "size" refers to electrical output (measured in watts), not physical measurements. A 400W panel has the same physical footprint whether it produces 350W or 450W - the difference lies in cell.

Solar panels have become the cornerstone of residential clean energy, with standard sizes designed to balance power output and installation practicality. Most residential solar panels measure between 65 to 75 inches long and 39 to 41 inches wide, delivering power outputs ranging from 250 to 400.

Choosing the right solar panel size can feel like a puzzle, as it is a key part of how solar energy works. Roof shapes, power goals, and budget lines all shift the pieces. Yet a few clear numbers turn that puzzle into a simple plan. This guide puts those numbers front and center, from the standard.

Solar panel "size" actually refers to two key measurements: These two factors work together to determine your system's efficiency, cost, and performance. The trick is finding the right balance for your specific project type and goals. Physical Size: 51-102 cm long, 41-66 cm wide (typical range).

The size of solar panels varies depending on the number of photovoltaic (PV) cells



they include. Each cell adds to the panel's total voltage and power output. The most commonly used cell layouts are 60-cell, 72-cell, and 96-cell panels. Let's consider their main features and purpose: 60-cell solar.



## Popular PV panel sizes

---

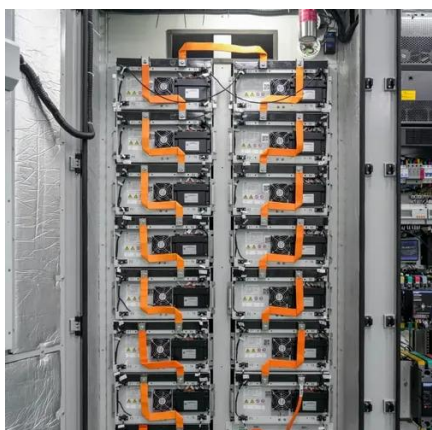


### [Solar Panel Size Guide , Best Panel Size for Your ...](#)

Solar cells are assembled in grids, and the most common configurations are 60-cell panels for residential use and 72-cell panels for ...

### [Detailed Guide to Solar Panel Size & Dimensions](#)

Each cell adds to the panel's total voltage and power output. The most commonly used cell layouts are 60-cell, 72-cell, and 96-cell ...



### **Understanding Photovoltaic Panel Sizes - What You Need to ...**

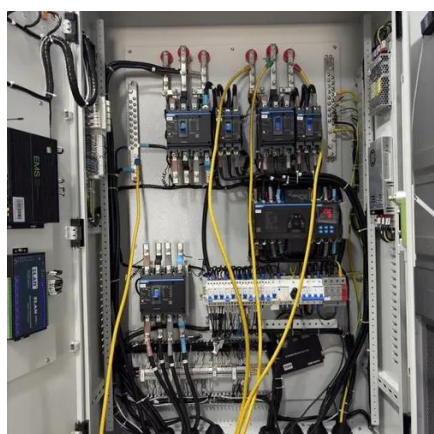
In this detailed guide, we'll explain how solar panel dimensions correlate with wattage, the different size standards, and how to calculate the best fit for your energy goals.

### [Perfect Solar Panel Sizes for Your Home \(Expert Sizing Guide\)](#)

When choosing residential solar panels, you'll typically encounter two main configurations: 60-cell and 72-cell panels. 60-cell panels are the



most popular choice for ...

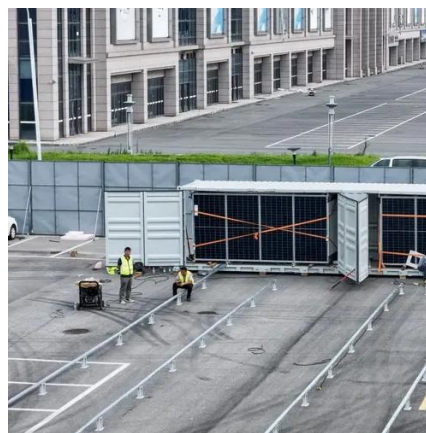


### [standard solar photovoltaic panel sizes explained](#)

Discover standard solar photovoltaic panel sizes. Choose the perfect fit for your installation with our expert guide. Learn more today!

### [Solar Panel Size & Dimensions Guide 2025 . Complete Specs](#)

Standard Residential Panels Optimize Space and Handling: The industry-standard 60-cell panel dimensions (65" x 39" x 1.5") aren't arbitrary - they represent the optimal ...



### [What Are the Common Solar Panel Sizes?](#)

Our guide on solar panel sizes covers standard dimensions, along with their power output and ideal applications.



## Understanding Solar Panel Dimensions In 2025: A Complete Size

...

Explore the most common solar panel dimensions in 2025, including residential and commercial sizes. Learn how solar panel size dimensions affect power, installation, and ...



### [Solar Panel Sizes: Choosing the Right Dimensions ...](#)

Our guide helps you pick the perfect solar panel size for any project: residential, commercial, or industrial. No more guesswork, just ...

## Solar Panel Sizes: Choosing the Right Dimensions for Any Project

Our guide helps you pick the perfect solar panel size for any project: residential, commercial, or industrial. No more guesswork, just maximum savings.



### [Solar Panel Size Guide , Best Panel Size for Your Roof](#)

Solar cells are assembled in grids, and the most common configurations are 60-cell panels for residential use and 72-cell panels for commercial or utility use. A 60-cell panel ...





## Solar Panel Sizes Explained: Choosing the Right Fit for Your ...

Discover the ideal solar panel size for your energy needs. This guide breaks down how panel size impacts efficiency, installation, and cost, helping you choose the right option for ...



**Outdoor Cabinet BESS**  
50 kWh/500 kWh Battery Storage System  
Industrial and Commercial Energy Storage

- All in One**  
Integrating battery packs
- High-capacity**  
50-500kWh
- Degree of Protection**  
IP54
- Operating Temperature Range**  
-20~60°C (Derating above 50°C)
- Intelligent Integration**  
integrated photovoltaic storage cabinet
- Rated AC Power**  
50-100kW
- Altitude**  
3000m(>3000m derating)

## [Detailed Guide to Solar Panel Size & Dimensions](#)

Each cell adds to the panel's total voltage and power output. The most commonly used cell layouts are 60-cell, 72-cell, and 96-cell panels. Let's consider their main features and ...



## Contact Us

---

For inquiries, pricing, or partnerships:

<https://sccd-sk.eu>

Phone: +32 2 808 71 94

Email: [info@sccd-sk.eu](mailto:info@sccd-sk.eu)

Scan QR code for WhatsApp.

