



# Power consumption of Huawei 5g base station equipment





## Overview

---

How much power does a 5G station use?

The power consumption of a single 5G station is 2.5 to 3.5 times higher than that of a single 4G station. The main factor behind this increase in 5G power consumption is the high power usage of the active antenna unit (AAU). Under a full workload, a single station uses nearly 3700W.

Why does 5G use more power than 4G?

The data here all comes from operators on the front lines, and we can draw the following valuable conclusions: The power consumption of a single 5G station is 2.5 to 3.5 times higher than that of a single 4G station. The main factor behind this increase in 5G power consumption is the high power usage of the active antenna unit (AAU).

Should power consumption models be used in 5G networks?

This restricts the potential use of the power models, as their validity and accuracy remain unclear. Future work includes the further development of the power consumption models to form a unified evaluation framework that enables the quantification and optimization of energy consumption and energy efficiency of 5G networks.

How many sites will adopt Huawei's 5G power solution?

An estimated 800,000 of these sites will adopt Huawei's 5G Power solution, eliminating 900 million kg in carbon emissions every year, helping to realize targets for green power grids for the 5G era. The 5G Power solution is underpinned by breakthroughs in hardware and software and site-wide coordination.



## Power consumption of Huawei 5g base station equipment

---



### Powering 5G

This figure is for one amplifier, and in a typical 5G base station site, according to Huawei, the total power consumption can be over 11.5kW including legacy 2/3/4G radios and ...

### Why does 5g base station consume so much ...

Huawei and ZTE's 5G base stations have a 100% load power consumption of 3852.5W and 3674.85W, respectively, while ZTE's 4G ...



### Huawei will launch lowest power consumption 5G base station, ...

Today, Huawei will have a new "0 Bit 0 Watt" 5G network base station next month, which could standby at the lowest power consumption of 5W equal to a light bulb.



### How energy-efficient are Huawei's 5G base stations compared to ...

Power Consumption: Huawei's 5G base stations have significantly lower power consumption compared to their 4G counterparts. This is



achieved through advanced power management  
...



## 5G Power Whitepaper

As the power consumption of 5G sites expected to be doubled, the heat consumption of sites is also expected to go up in parallel. The heat dissipation capability of some sites cannot meet ...

### Comparison of Power Consumption Models for 5G Cellular ...

Power consumption models for base stations are briefly discussed as part of the development of a model for life cycle assessment. An overview of relevant base station power ...



## 5G Power: Creating a green grid that slashes costs, emissions

In the 5G era, the maximum energy consumption of a 64T64R active antenna unit (AAU) will be an estimated 1 to 1.4 kW to 2 kW for a baseband unit (BBU). Base stations with multiple ...







## [Huawei will launch lowest power consumption 5G ...](#)

Today, Huawei will have a new "0 Bit 0 Watt" 5G network base station next month, which could standby at the lowest power consumption ...

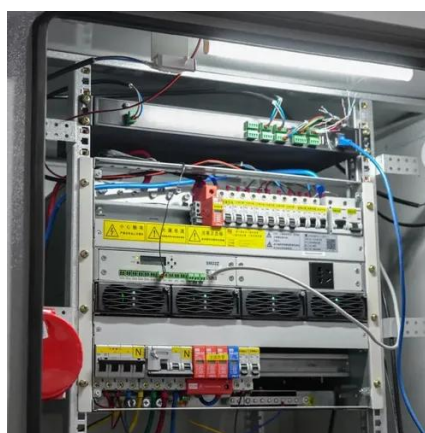


## **Comparison of Power Consumption Models for 5G Cellular Network Base**

Power consumption models for base stations are briefly discussed as part of the development of a model for life cycle assessment. An overview of relevant base station power ...

## [Machine Learning and Analytical Power Consumption ...](#)

roduce a new power consumption model for 5G active antenna units (AAUs), the highest power consuming component of a BS1 and in turn of a mobile network. I. particular, we present an ...



## [Front Line Data Study about 5G Power Consumption](#)

The two figures above show the actual power consumption test results of 5G base stations from different manufacturers, ZTE and HUAWEI, in Guangzhou and Shenzhen, by an anonymous ...



## Why does 5g base station consume so much power and how to ...

Huawei and ZTE's 5G base stations have a 100% load power consumption of 3852.5W and 3674.85W, respectively, while ZTE's 4G base station has a power consumption ...



## 5G Power: Creating a green grid that slashes costs, emissions

In the 5G era, the maximum energy consumption of a 64T64R active antenna unit (AAU) will be an estimated 1 to 1.4 kW to 2 kW for a baseband unit (BBU). Base stations with multiple ...

## Huawei's world's first 5G-A smart base station technology ...

Intelligent energy consumption regulation: AI dynamically adjusts the base station power according to the density of people and business load, such as automatically switching to low ...



## Powering 5G

This figure is for one amplifier, and in a typical 5G base station site, according to Huawei, the total power consumption can be over ...



## Contact Us

---

For inquiries, pricing, or partnerships:

<https://sccd-sk.eu>

Phone: +32 2 808 71 94

Email: [info@sccd-sk.eu](mailto:info@sccd-sk.eu)

Scan QR code for WhatsApp.

