



Power consumption of integrated 5G base stations in Ireland





Power consumption of integrated 5G base stations in Ireland



[Running Python scripts in Microsoft Power Automate Cloud](#)

I use Power Automate to collect responses from a Form and send emails based on the responses. The main objective is to automate decision-making using Python to approve or ...

Power Automate

I have created a Flow in Power automate, have used a Refresh a Power BI dataset component, there is no issue in terms of functionality as such and I am able to refresh ...



power automate

0 Creating a flow in Power Automate: New Step
Choose the OneDrive "Get file content" action File
= /Documents/Folder/File.json Infer Content Type
= Yes New Step Choose ...

Data Source Credentials and Scheduled Refresh greyed out in ...

Data Source Credentials and Scheduled Refresh greyed out in Power BI Service Asked 4 years, 8 months ago Modified 3 years, 4 months ago



Viewed 18k times

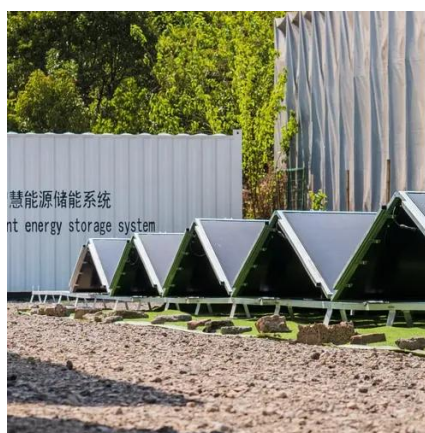


[How to solve the network error when using a patch function?](#)

Below are some of the reasons you get the network error when using a patch function in Microsoft Power Apps applications: One of the columns in your SharePoint list is ...

How do I refresh an Excel Power Query using Power Automate ...

0 I have data being pulled from a SharePoint list to an Excel file and I'm trying to use Power Automate online to create a scheduled flow that will trigger the "Refresh All" button ...



Voltage range: 91.2-947.2V
>6000 cycles(100%DOD)
Rated battery capacity:
216KWH (customizable)
EMS communication:
4G/CAN/RS485

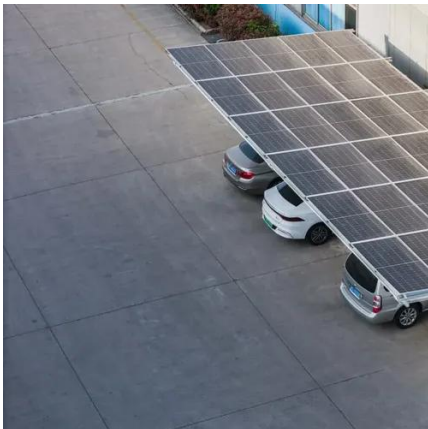
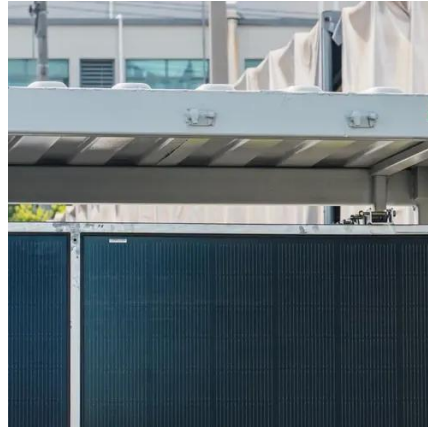
How to use Power Automate flows to manage user access to ...

Send an HTTP request to SharePoint action in Power automate flows works with SharePoint REST APIs. Follow below Microsoft official documentations for SharePoint REST ...



Extract Value from Array in Power Automate

Extract Value from Array in Power Automate Asked
1 year, 2 months ago Modified 9 months ago
Viewed 6k times



powerbi

In Power Automate, within the Power BI connector, you'll find the "Run a query against a dataset" action. Take note: this can only return one table at a time with max of 1,000 ...

powerbi

I have a table PRODUCTS in Power BI that has a column named Product_Group. When I go to transform data I can see all the Product groups. (DirectQuery connection, it is ...





Contact Us

For inquiries, pricing, or partnerships:

<https://sccd-sk.eu>

Phone: +32 2 808 71 94

Email: info@sccd-sk.eu

Scan QR code for WhatsApp.

