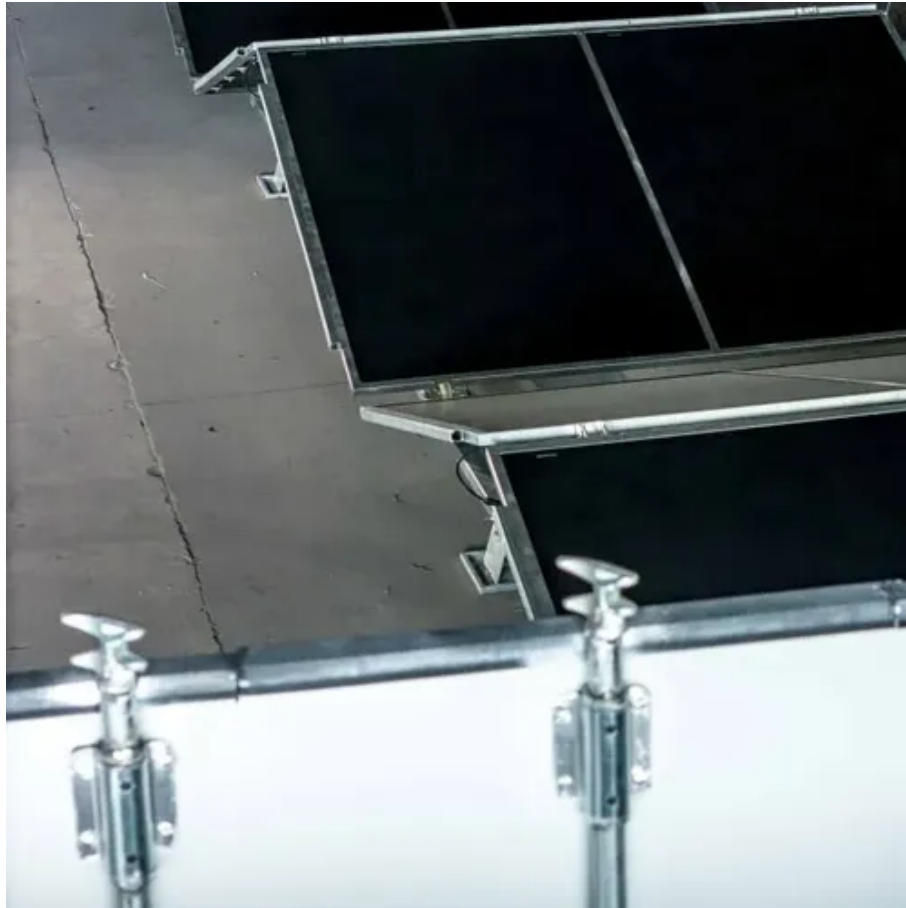




Prague distributed energy storage costs





Prague distributed energy storage costs



[Prague: Gem of Europe with 100 Spires . VisitCzechia](#)

Experience Prague like never before! Step into the capital of the Czech Republic, a UNESCO World Heritage gem, where history, culture, and charm come alive. Wander through stunning ...

Prague

Prague, located on the Vltava River, has a population of about 1.4 million, while its metropolitan area is home to approximately 2.3 million people. Prague is a historical city with Romanesque, ...



Prague Travel Guide

Everything you need to know about Prague: top sights and attractions, the best things to do, useful travel tips, mistakes to avoid, and more.

Prague , History, Map, Population, Language, Climate & Facts

Prague, city, capital of the Czech Republic. Lying at the heart of Europe, it is one of the continent's finest cities and the major Czech economic and



cultural center. The city has ...



[10 Things to Do in Prague \(That are Totally Worth It\)](#)

This guide starts off with the top 10 things to do in Prague, perfect for those who are planning a quick trip to the city or only want to visit the "must-sees."

[Prague, Czech Republic: All You Must Know Before You Go ...](#)

From the heart of Old Town Square to Prague Castle up on the hill, you could spend your days wandering up and down the river, marveling at the city. It's also one of the classical music ...

114KWh ESS



[plan your trip to prague , Prague City Tourism](#)

Prague is not only a beautiful architectural gem, but also one of the most cultural cities in the world. Not for nothing is the thousand-year-old name of the metropolitan area Bohemia. You ...



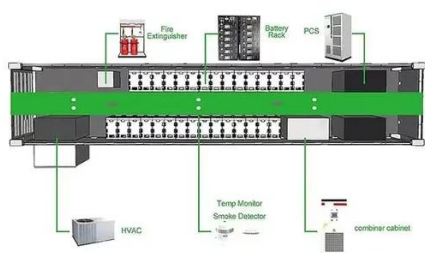
[Prague Experience , Official Website , Tourist Information](#)

Our Prague Tourist Information Guide provides the practical information you need to plan your Prague trip. Read tips on currency exchange, prices, mobile connectivity, activities for ...



A first-time guide to Prague

Prague will take your breath away. Prepare for your first visit with this guide to when to go, what to see and how long to stay.



Prague Tourist Information

Make the most of your time in Prague with our expertly crafted 2, 3, 4 or 5-day itineraries, featuring must-see landmarks, hidden gems, and local tips for an unforgettable trip!





Contact Us

For inquiries, pricing, or partnerships:

<https://sccd-sk.eu>

Phone: +32 2 808 71 94

Email: info@sccd-sk.eu

Scan QR code for WhatsApp.

