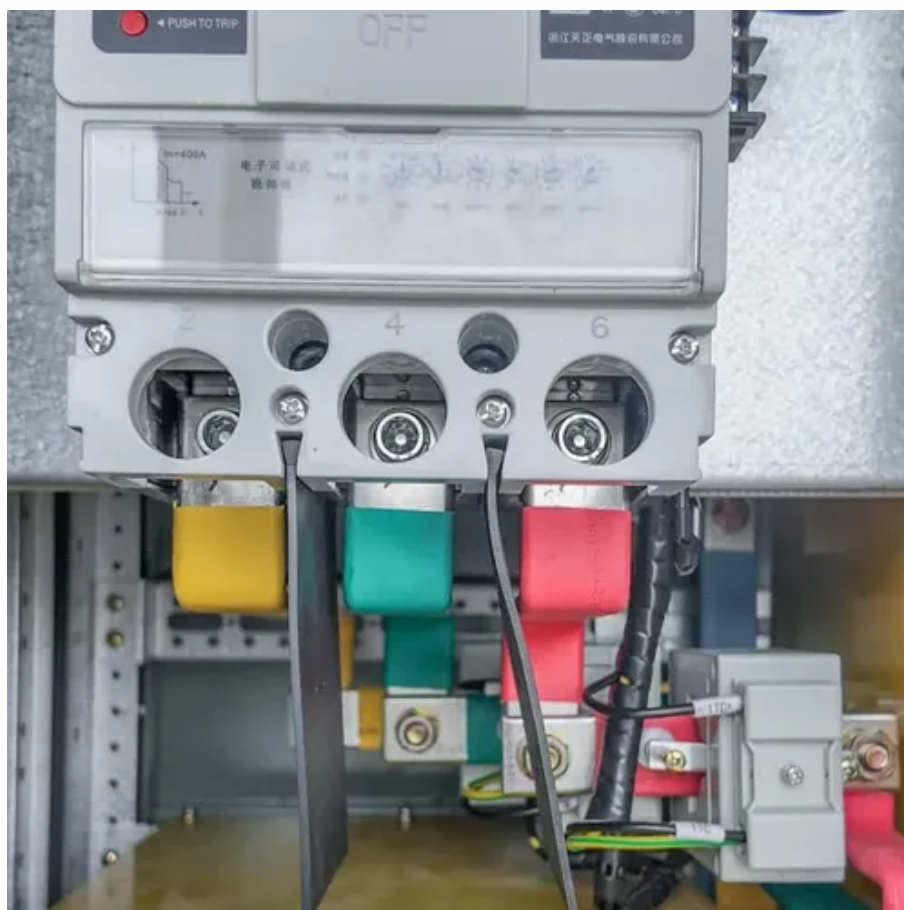




Principle of flywheel energy storage cabinet for solar container communication station





Overview

A typical system consists of a flywheel supported by connected to a . The flywheel and sometimes motor-generator may be enclosed in a to reduce friction and energy loss. First-generation flywheel energy-storage systems use a large flywheel rotating on mechanical bearings. Newer systems use composite

Flywheel Energy Storage Systems (FESS) rely on a mechanical working principle: An electric motor is used to spin a rotor of high inertia up to 20,000-50,000 rpm. Electrical energy is thus converted to kinetic energy for storage.

Flywheel Energy Storage Systems (FESS) rely on a mechanical working principle: An electric motor is used to spin a rotor of high inertia up to 20,000-50,000 rpm. Electrical energy is thus converted to kinetic energy for storage.

Abstract - This study gives a critical review of flywheel energy storage systems and their feasibility in various applications. Flywheel energy storage systems have gained increased popularity as a method of environmentally friendly energy storage. How does a flywheel energy storage system work?

.

Flywheel energy storage is mostly used in hybrid systems that complement solar and wind energy by enhancing their stability and balancing the grid frequency because of their quicker response times or with high-energy density storage solutions like Li-ion batteries . Can flywheels be used for power.

Flywheel Energy Storage Systems (FESS) rely on a mechanical working principle: An electric motor is used to spin a rotor of high inertia up to 20,000-50,000 rpm. Electrical energy is thus converted to kinetic energy for storage. For discharging, the motor acts as a generator, braking the rotor to.

Flywheel energy storage (FES) works by spinning a rotor (flywheel) and maintaining the energy in the system as rotational energy. When energy is extracted from the system, the flywheel's rotational speed is reduced as a consequence of the principle of conservation of energy; adding energy to the.

That's essentially flywheel energy storage in a nutshell—a technology that's been around since the Industrial Revolution but is now stealing the spotlight in renewable energy circles. Whether you're a tech geek, an eco-warrior, or just



someone curious about how we'll power the future, this article.

There is noticeable progress in FESS, especially in utility, large-scale deployment for the electrical grid, and renewable energy applications. This paper gives a review of the recent developments in FESS technologies. Due to the highly interdisciplinary nature of FESSs, we survey different design.



Principle of flywheel energy storage cabinet for solar container comm



Technology: Flywheel Energy Storage

Flywheel Energy Storage Systems (FESS) rely on a mechanical working principle: An electric motor is used to spin a rotor of high inertia up to 20,000-50,000 rpm.

Flywheel Energy Storage Systems and their Applications: A ...

Flywheel energy storage systems have gained increased popularity as a method of environmentally friendly energy storage. Flywheels store energy in mechanical rotational ...



[How does flywheel energy storage work?](#)

At its core, flywheel energy storage operates on the principle of kinetic energy. A flywheel is essentially a heavy rotating mass, usually made of high - strength materials like ...



Flywheels in renewable energy Systems: An analysis of their role ...

FESSs are characterized by their high-power density, rapid response times, an exceptional cycle life, and high efficiency, which make them



particularly suitable for ...



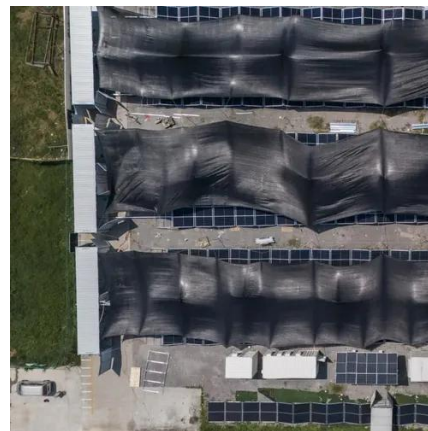
Flywheel energy storage

First-generation flywheel energy-storage systems use a large steel flywheel rotating on mechanical bearings. Newer systems use carbon-fiber composite rotors that have a higher ...



Signal tower solar container communication station flywheel ...

Flywheel energy storage systems are suitable and economical when frequent charge and discharge cycles are required. Furthermore, flywheel batteries have high power density and a ...



Working Principle of Flywheel Energy Storage Container

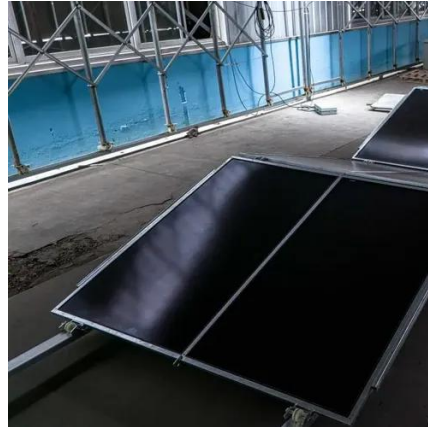
A flywheel energy storage system or "flywheel battery" is a mechanical battery that stores energy kinetically in the form of a rotating mass, and uses the inertia of the





A review of flywheel energy storage systems: state of the art ...

Energy storage systems (ESS) play an essential role in providing continuous and high-quality power. ESSs store intermittent renewable energy to create reliable micro-grids ...



Flywheel energy storage

OverviewMain componentsPhysical characteristicsApplicationsComparison to electric batteriesSee alsoFurther readingExternal links

A typical system consists of a flywheel supported by rolling-element bearing connected to a motor-generator. The flywheel and sometimes motor-generator may be enclosed in a vacuum chamber to reduce friction and energy loss. First-generation flywheel energy-storage systems use a large steel flywheel rotating on mechanical bearings. Newer systems use carbon-fiber composite rotors

[How is flywheel energy storage in large solar container ...](#)

Abstract - This study gives a critical review of flywheel energy storage systems and their feasibility in various applications. Flywheel energy storage systems have gained increased popularity as ...



Flywheel Energy Storage: The Spinning Marvel of Modern Power ...

At its core, flywheel energy storage converts electrical energy into rotational kinetic energy. Think of it like revving up a toy car's wheels--except here, the "wheel" is a massive ...



How does flywheel energy storage work?

At its core, flywheel energy storage operates on the principle of kinetic energy. A flywheel is essentially a heavy rotating mass, usually ...





Contact Us

For inquiries, pricing, or partnerships:

<https://sccd-sk.eu>

Phone: +32 2 808 71 94

Email: info@sccd-sk.eu

Scan QR code for WhatsApp.

