



# Pristina three-phase inverter installation





## Pristina three-phase inverter installation



### [PARALLEL INSTALLATION USER MANUAL Incl. 3-Phase ...](#)

Be sure the length of all battery cables is the same. Otherwise, there will be voltage difference between inverter and battery to cause parallel inverters not working.

### [Three Phase System Installation Guide](#)

During installation, testing and inspection, adherence to all the handling and safety instructions is mandatory. Failure to do so may result in injury or loss of life and damage to the equipment.



### [3-phase grid tie inverter installation instruction](#)

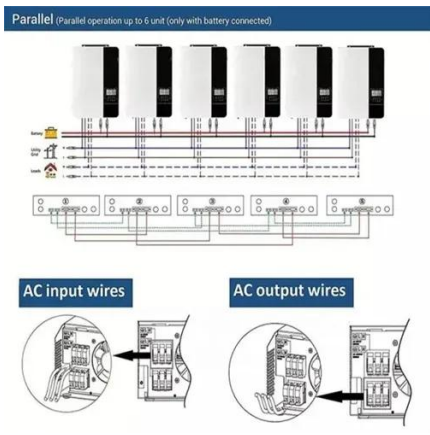
Choose an installation position, the wall must be firm and reliable. Remove the bracket of the product. Fix the bracket with the expansion screws in the package. Place the product on the ...

### [USER MANUAL Three-phase Hybrid Inverter](#)

Three phase hybrid inverter now only supports the lithium / lead-acid battery. The recommended lithium battery brands are as follows: PYLON LPF,



Aoboet LPF, Dyness LPF, UZENERGY ...



### Installation Guide for Three Phase Solar Inverters

This guide provides a complete, step-by-step process for safely installing a Three-Phase Solar On-Grid Inverter, covering everything from tools to testing and maintenance. ...

### Three Phase System

The RS485 option enables creating a bus of connected inverters, consisting of up to 31 follower inverters and 1 leader inverter. Using this option, inverters are connected to each other in a ...

12.8V6Ah

- Nominal voltage (V):12.8
- Nominal capacity (ah):6
- Rated energy (WH):76.8
- Maximum charging voltage (V):14.6
- Maximum charging current (a):6
- Floating charge voltage (V):13.6-13.8
- Maximum continuous discharge current (a):10
- Maximum peak discharge current @10 seconds (a):20
- Maximum load power (W):100
- Discharge cut-off voltage (V):10.8
- Charging temperature (°C):-50
- Discharge temperature (°C):-20-+60
- Working humidity: <95% R.H (non condensing)
- Number of cycles (25 °C, 0.5c, 100%doD): >2000
- Cell combination mode: 32700-4/1p
- Terminal specification: T2 (6.3mm)
- Protection grade: IP65
- Overall dimension (mm):50\*70\*107mm
- Reference weight (kg):0.7
- Certification: un38.3/msds



### Three Phase System Installation Guide

Important Notice  
 FCC  
 Compliance  
 Disclaimers  
 Chapter 1: Introducing the SolarEdge Power Harvesting System  
 Chapter 3: Installing the Inverter  
 Appendix A: Errors and Troubleshooting  
 Appendix D: Replacing and Adding System Components  
 HANDLING AND SAFETY  
 INSTRUCTIONSSafety Symbols  
 Information  
 CONSIGNES DE SÉCURITÉ  
 IMPORTANTES  
 Chapter 1: Introducing the SolarEdge Power Harvesting System  
 Power



OptimizerInverter with Safety SwitchMonitoring  
PlatformPackage ContentsInstallation  
GuidelinesP860 and M1600 power optimizersStep  
1: Mounting and Grounding the Power  
OptimizersStep 2: Connecting a PV module to a  
Power OptimizerInverter Package  
ContentsIdentifying the InverterOpening Conduit  
Drill GuidesConnecting the Strings to the Safety  
SwitchStep 1: Activating the InstallationBefore  
activationStep 2: Commissioning and Configuring  
the InstallationTo access the Commissioning  
screen:PairingThe Monitoring PlatformCreating  
Logical and Physical Layout using Installation  
InformationDesignerMapper ApplicationChapter 6:  
Setting Up Communication to the Monitoring  
PlatformCommunication OptionsEthernetWireless  
Gateway, Wireless  
Repeater(s)CellularZigBeeRemoving the DC Safety  
Unit Cover (if applicable)Appendix A: Errors and  
TroubleshootingIdentifying ErrorsTroubleshooting  
Ethernet (LAN) CommunicationFan  
MaintenanceAppendix D: Replacing and Adding  
System ComponentsDetermining the Circuit  
Breaker Size Using Transformers in Commercial  
Three Phase Inverter InstallationsShort-circuit  
current rating (SCCR) of industrial control  
panelsSupport Contact InformationCopyright ©  
SolarEdge Inc. All rights reserved. No part of this  
document may be reproduced, stored in a  
retrieval system or transmitted, in any form or by  
any means, electronic, mechanical, photographic,  
magnetic or otherwise, without the prior written  
permission of SolarEdge Inc. The material  
furnished in this document is believed to be  
accurate See more on [knowledge-center.solaredge.com](https://knowledge-center.solaredge.com)  
Solacity[PDF]

## **THREE-PHASE STRING INVERTER INSTALLATION ...**

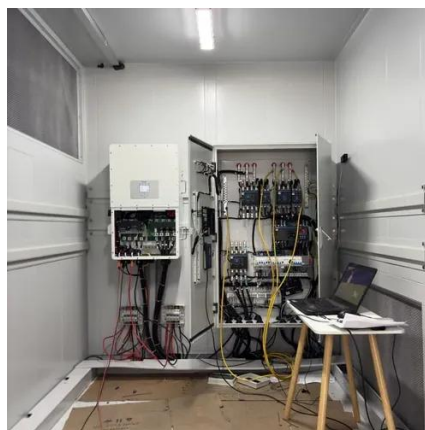
Thank you for choosing this CSI Grid-tied PV Inverter. This PV Inverter is a high performance and highly reliable product specifically designed for the North American Solar market.

### **Step-by-Step Installation Guide for Three-Phase Hybrid Solar Inverters**

In this guide, we will focus on the installation



process for the SolaX Power three-phase hybrid solar inverter, a leading brand known for its innovation and quality. Before diving ...



### [Three Phase Inverter with Synergy Technology for North ...](#)

This manual describes the installation of the Three Phase Inverter with Synergy Technology. Read this manual before you attempt to install the product and follow the instructions ...



### **Installation Guide**

It provides step-by-step instructions on how to safely and effectively install and operate a three-phase solar pump inverter. This guide is designed to help installers, contractors, and end ...



### [Step-by-Step Installation Guide for Three-Phase ...](#)

In this guide, we will focus on the installation process for the SolaX Power three-phase hybrid solar inverter, a leading brand known for ...





## THREE-PHASE STRING INVERTER INSTALLATION ...

Thank you for choosing this CSI Grid-tied PV Inverter. This PV Inverter is a high performance and highly reliable product specifically designed for the North American Solar market.





## Contact Us

---

For inquiries, pricing, or partnerships:

<https://sccd-sk.eu>

Phone: +32 2 808 71 94

Email: [info@sccd-sk.eu](mailto:info@sccd-sk.eu)

Scan QR code for WhatsApp.

