



Replacing lithium batteries at Tokyo solar container communication stations





Overview

Mitsubishi Fuso Truck and Bus Corporation (MFTBC), Mitsubishi Motors, Ample and Yamato Transport have announced a multi-year pilot program beginning September 2025 to deploy more than 150 battery-swappable commercial electric vehicles (EVs) and 14 modular battery swapping .

Mitsubishi Fuso Truck and Bus Corporation (MFTBC), Mitsubishi Motors, Ample and Yamato Transport have announced a multi-year pilot program beginning September 2025 to deploy more than 150 battery-swappable commercial electric vehicles (EVs) and 14 modular battery swapping .

Supported by a grant from the Tokyo Metropolitan Environmental Public Corporation, Ample together with Mitsubishi Fuso Truck and Bus Corporation and Mitsubishi Motors Corporation, is deploying a network of swapping stations across Tokyo, ensuring seamless access for EV fleets throughout the city.

In early 2024, Ample entered the Japanese market by deploying battery swapping stations in Kyoto in partnership with Mitsubishi Fuso Truck and Bus Corporation (MFTBC) and ENEOS Holdings. The Kyoto deployment demonstrated core benefits of modular battery swapping for fleet electrification, including.

In early 2024, Ample entered the Japanese market by deploying battery-swapping stations in Kyoto in partnership with Mitsubishi Fuso Truck and Bus Corporation (MFTBC) and ENEOS Holdings. The Kyoto deployment demonstrated the core benefits of modular battery swapping for fleet electrification.

Mitsubishi Fuso Truck and Bus Corporation (MFTBC), Mitsubishi Motors, Ample and Yamato Transport have announced a multi-year pilot program beginning September 2025 to deploy more than 150 battery-swappable commercial electric vehicles (EVs) and 14 modular battery swapping stations across Tokyo. The.

US-based battery swap startup Ample announced plans to deploy a network of battery swapping stations in Tokyo, partnering with Mitsubishi Fuso Truck and Bus Corporation (MFTBC) and Mitsubishi Motors Corporation to support the city's push for commercial fleet electrification. The initiative aims to.

Ample, which is a developer of modular battery swapping systems which fully



charges EVs in five minutes, will deploy a network of swapping stations in Tokyo, with an initial focus on supporting commercial fleets in the logistics sector. This expansion of Ample's swapping network will provide.



Replacing lithium batteries at Tokyo solar container communication s



[Lithium battery is the winning weapon of ...](#)

In energy storage systems, it is a trend to replace lead acid with lithium batteries that are smaller in volume, lighter in weight, higher in energy ...

International consortium rolls out EV battery swapping initiative i

Mitsubishi Fuso Truck and Bus Corporation (MFTBC), Mitsubishi Motors, Ample and Yamato Transport have announced a multi-year pilot program beginning September 2025 ...

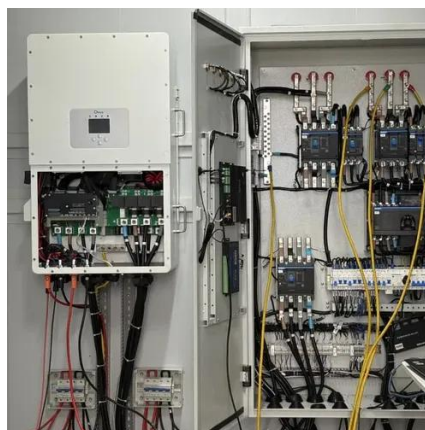


Ample to Partner with Japanese OEMs Deploying Swapping Stations in Tokyo

Following Ample's battery swapping demonstration in Kyoto, Ample will establish battery swapping stations in Tokyo, supporting efforts to accelerate commercial fleet ...

[Ample to launch Battery-Swapping Stations in Tokyo with ...](#)

Ample will deploy a network of swapping stations in Tokyo, with an initial focus on supporting commercial fleets in the logistics sector.



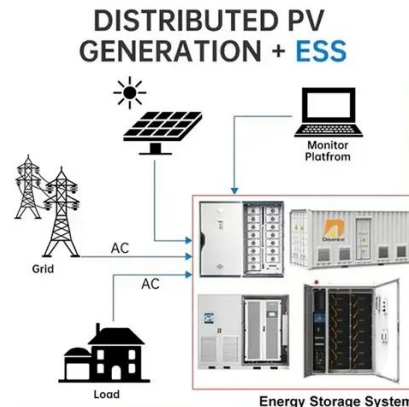
[GS Yuasa Wins Order from Tokyo Metropolitan ...](#)

Lithium-ion batteries, which have long cycle life and require less space, will replace lead-acid storage batteries, which have been ...



Ample to Partner with Japanese OEMs to Deploy Swapping Stations in Tokyo

Ample, which is a developer of modular battery swapping systems which fully charges EVs in five minutes, will deploy a network of swapping stations in Tokyo, with an initial ...



Ample to Partner with Japanese OEMs Deploying Battery Swapping Stations

The company's compact, rapidly deployable stations can be installed in just a few days, providing a practical solution for high-utilization vehicles operating in dense urban ...



Ample to Partner with Japanese OEMs Deploying ...

The company's compact, rapidly deployable stations can be installed in just a few days, providing a practical solution for high ...



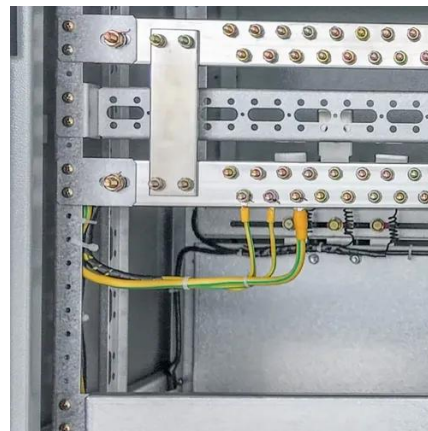
Ample to launch Battery-Swapping Stations in ...

Ample will deploy a network of swapping stations in Tokyo, with an initial focus on supporting commercial fleets in the logistics sector.



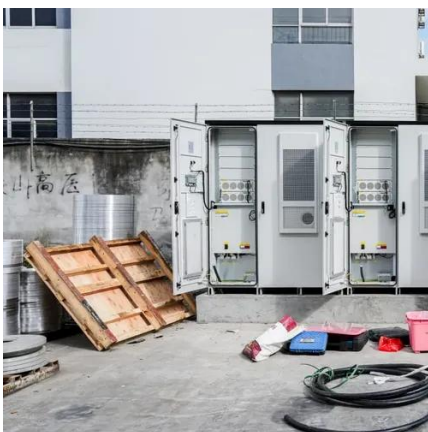
Lithium battery is the winning weapon of communication base station

In energy storage systems, it is a trend to replace lead acid with lithium batteries that are smaller in volume, lighter in weight, higher in energy density, longer in life and better in performance.



Ample to deploy battery swapping stations in Tokyo

Ample manufactures and operates a rapidly deployable modular battery swapping ecosystem which fully charges electric vehicles (EVs) in five minutes, providing fleet operators ...





Ample to Establish Battery Swapping Network in ...

The initiative aims to enhance logistics efficiency while contributing to Tokyo's goal of reducing greenhouse gas emissions by ...

GRADE A BATTERY

LiFePO4 battery will not burn when overcharged, over discharged, overcurrent or short circuit and can withstand high temperatures without decomposition.



International consortium rolls out EV battery ...

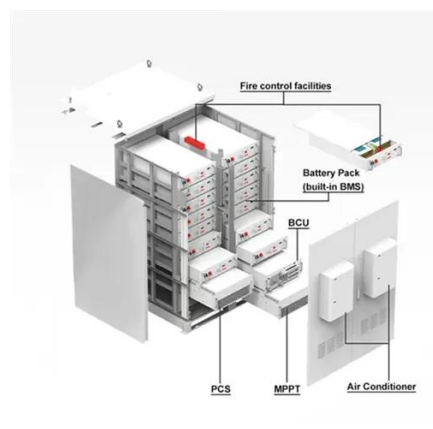
Mitsubishi Fuso Truck and Bus Corporation (MFTBC), Mitsubishi Motors, Ample and Yamato Transport have announced a multi ...

Ample to Partner with Japanese OEMs to Deploy Swapping ...

Ample, which is a developer of modular battery swapping systems which fully charges EVs in five minutes, will deploy a network of swapping stations in Tokyo, with an initial ...



51.2V 150AH, 7.68KWH



Ample to Establish Battery Swapping Network in Tokyo

The initiative aims to enhance logistics efficiency while contributing to Tokyo's goal of reducing greenhouse gas emissions by 50% by 2030. The project is backed by the Tokyo ...



Ample is Coming to Tokyo: A Battery Swapping Infrastructure to

The deployment showed how modular battery swapping keeps fleets moving, eliminates long charging times, and eases grid demand. Now, that success is coming to ...



[GS Yuasa Wins Order from Tokyo Metropolitan Bureau of ...](#)

Lithium-ion batteries, which have long cycle life and require less space, will replace lead-acid storage batteries, which have been used in power supply systems of railway ...

[Ample to Partner with Japanese OEMs Deploying Swapping ...](#)

Following Ample's battery swapping demonstration in Kyoto, Ample will establish battery swapping stations in Tokyo, supporting efforts to accelerate commercial fleet ...





Contact Us

For inquiries, pricing, or partnerships:

<https://sccd-sk.eu>

Phone: +32 2 808 71 94

Email: info@sccd-sk.eu

Scan QR code for WhatsApp.

