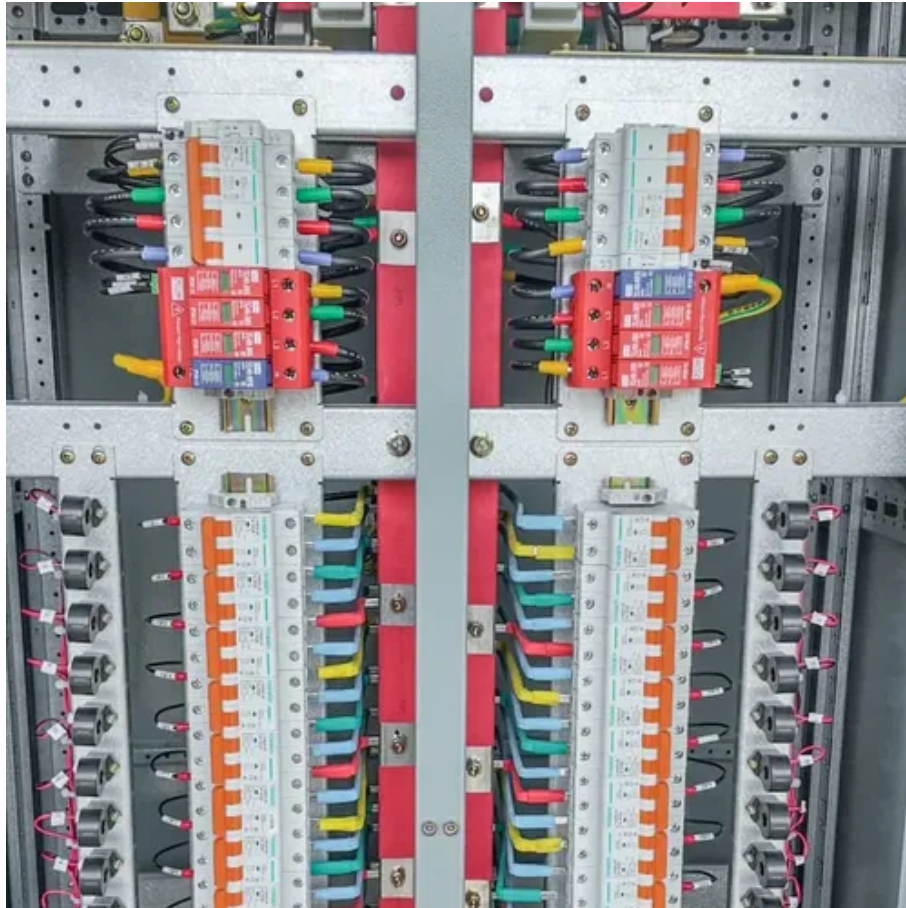




# Retaining wall inside the energy storage power station





## Overview

---

Create functional and stable retaining walls for managing slopes, preventing erosion, and maximizing usable space within your power and energy facility. Construct secure and durable enclosures for housing sensitive equipment.

Create functional and stable retaining walls for managing slopes, preventing erosion, and maximizing usable space within your power and energy facility. Construct secure and durable enclosures for housing sensitive equipment.

Luckily, there's a proven, engineered retaining wall solution you can rely on to overcome many site scenarios. Why Choose Redi-Rock for Power Industry Applications?

Redi-Rock is a precast modular block wall system designed for engineers by engineers that uses massive, one-ton blocks that stack.

Redi-Rock is a precast modular block wall system designed for engineers by engineers that uses massive, one-ton blocks that stack together like giant Lego blocks to build strong, reliable walls. The system makes it possible to overcome: Got Questions?

Contact the professionals at Redi-Rock K.I.T.

Substation security walls by Permacast Walls help harden electrical substations, power plants, and critical infrastructure against various threats, including physical attacks, ballistic attacks, vandalism, and natural disasters. Precast concrete ballistic fence walls by Permacast Walls are.

We understand that designing, building and installing a retaining wall near electrical substations and other utilities often requires careful planning. And while the ideal scenario for power stations and facilities is a level construction site in a location with easy access, most engineers can.

As energy consumption rises due to factors like population migration, the proliferation of data centers, and the surge in electric vehicles (EVs), the urgency to protect critical infrastructure has intensified. This heightened demand has led to long lead times for essential equipment, such as.



Let's face it—when you think about energy storage stations, partition walls probably don't top your "cool tech" list. But here's the kicker: these unassuming barriers are like the backstage crew of a rock concert. Without them, the show (read: safe, efficient energy storage) would collapse faster.



## Retaining wall inside the energy storage power station

---



### [Power Industry Retaining Wall Solutions . Redi-Rock](#)

Engineers encounter a variety of hurdles when working on projects for the power industry such as uneven construction sites and accessibility considerations. Learn how the Redi-Rock retaining ...

### [Retaining Walls for Utilities . Redi-Rock K.I.T.](#)

Redi-Rock K.I.T. designs engineered retaining wall solutions for power stations and utilities facilities to create optimized construction sites.

**12.8V 200Ah**



**CN203188186U**

The utility model discloses a retaining wall structure of a hydropower station plant at a dam heel.

### [Utility Retaining Walls: Power Industry Solutions by ...](#)

Learn how Redi-Rock can help you build utility retaining walls near property lines and in remote locations with ease and minimal excavation.



### Substation Security Walls, Grid, Critical ...

The walls are made from ballistic-resistant, precast concrete and come in panels for easy installation. This makes them ideal for ...



### Retaining Wall Types Explained: From Gravity to Gabion

Retaining walls are built to resist lateral earth pressures and accommodate elevation changes. Choosing the right type depends on factors like site conditions, design life, ...



### **Why Partition Walls Are the Unsung Heroes of Energy Storage Stations**

Without them, the show (read: safe, efficient energy storage) would collapse faster than a house of cards in a tornado. This article dives into why these walls matter, who benefits from ...







## Precast Walls for Energy Florida

Our precast concrete walls provide UL 752 Level 10 ballistic protection for substations, battery storage, and renewable energy sites. Engineered for NERC CIP-014 compliance, they ensure ...



## [Energy Industry Precast Walls in Florida](#)

Retaining Walls: Create functional and stable retaining walls for managing slopes, preventing erosion, and maximizing usable space within your power and energy facility.

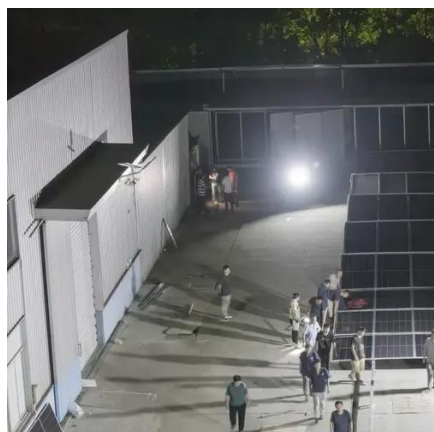
## Why Partition Walls Are the Unsung Heroes of Energy Storage ...

Without them, the show (read: safe, efficient energy storage) would collapse faster than a house of cards in a tornado. This article dives into why these walls matter, who benefits from ...



## [Energy Industry Precast Walls in Florida](#)

Retaining Walls: Create functional and stable retaining walls for managing slopes, preventing erosion, and maximizing usable space within your ...





## Substation Security Walls, Grid, Critical Infrastructure

The walls are made from ballistic-resistant, precast concrete and come in panels for easy installation. This makes them ideal for hardening electrical substations and other critical parts ...



## Defender Walls: The Backbone of Substation Physical Security

Defender Walls are vital component of the entire approach to the security of substations and related facilities. By acting as a physical barrier against trespassing, theft, and ...

## **Utility Retaining Walls: Power Industry Solutions by Redi-Rock**

Learn how Redi-Rock can help you build utility retaining walls near property lines and in remote locations with ease and minimal excavation.



## Retaining Wall Types Explained: From Gravity to ...

Retaining walls are built to resist lateral earth pressures and accommodate elevation changes. Choosing the right type depends on ...



## Defender Walls: The Backbone of Substation ...

Defender Walls are vital component of the entire approach to the security of substations and related facilities. By acting as a physical ...







## Contact Us

---

For inquiries, pricing, or partnerships:

<https://sccd-sk.eu>

Phone: +32 2 808 71 94

Email: [info@sccd-sk.eu](mailto:info@sccd-sk.eu)

Scan QR code for WhatsApp.

