



San Jose inverters switch to lithium batteries





Overview

The short answer is no - proper inverter matching is crucial for optimal performance and safety. Let's examine the key compatibility factors for lithium battery and LiFePO4 battery systems. Lithium batteries require specific inverter features: Voltage Matching.

The short answer is no - proper inverter matching is crucial for optimal performance and safety. Let's examine the key compatibility factors for lithium battery and LiFePO4 battery systems. Lithium batteries require specific inverter features: Voltage Matching.

To power your home during a PG&E power shutoff, lithium-ion batteries are the primary clean energy storage solution on the market at this time. When paired with rooftop solar, excess solar energy produced by your panels can be stored for later use in batteries for backup of critical loads in your.

From advanced energy storage to reliable power conversions, we help turn your motorhome into a truly mobile home. Elevate your 5th wheel adventures in San Jose with our cutting-edge lithium battery upgrades. Enjoy longer stays in your favorite remote spots with batteries that promise consistent.

Before you decide to pair a lithium-ion battery with your existing inverter, it's essential to consider several factors. These include the inverter's voltage, charging algorithm, and overall compatibility with lithium-ion technology. Not all inverters are created equal. Some may be specifically.

When setting up solar energy systems or home energy storage, a common question arises: Are lithium batteries compatible with all inverters?

The short answer is no - proper inverter matching is crucial for optimal performance and safety. Let's examine the key compatibility factors for lithium.

In order to grasp the compatibility between inverters and lithium batteries, it's important to have a basic understanding of what they are. Let's start with inverters. An inverter is essentially a device that converts DC (direct current) power into AC (alternating current) power, allowing you to.



An inverter is the heart of any backup power system, converting DC (direct current) energy stored in batteries into usable AC (alternating current) energy for household or commercial appliances. On the other hand, lithium batteries store energy and release it when required. Both work in tandem, and.



San Jose inverters switch to lithium batteries

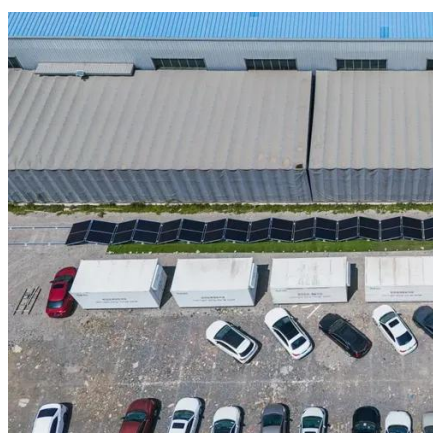


Can all inverters use lithium batteries?

Not all inverters are designed to work with lithium batteries, so it's essential to ensure that your chosen inverter can support this type of battery. The first thing you need to ...

Importance of Compatibility Between Inverter and ...

Inverters that are not designed to work with lithium batteries may overcharge or undercharge the battery, leading to premature ...



Compatibility of Lithium-Ion Batteries with Existing Inverters

This blog post will walk you through the essentials of lithium-ion batteries, their benefits, and the steps to seamlessly integrate them with your current inverter setup. From practical examples ...

Importance of Compatibility Between Inverter and Lithium Battery

Inverters that are not designed to work with lithium batteries may overcharge or undercharge the battery, leading to premature degradation.



Ensuring compatibility means that ...



Lithium Conversions for RV's, RV Solar Installation, San Jose CA ...

Keep your travel trailer powered up in San Jose with our premium inverter installations. Custom-tailored for the needs of travel trailers, our inverters ensure you've got the AC power to keep ...

Can Lithium Batteries Work With Any Type of Inverter?

The short answer is no - proper inverter matching is crucial for optimal performance and safety. Let's examine the key compatibility factors for lithium battery and LiFePO4 battery ...



Best Inverters for Lithium Batteries: Reliable Power Solutions for ...

Whether for off-grid solar systems, RVs, or emergency backup, inverters convert battery power to usable AC electricity. Below is a comparison table summarizing top-quality ...



How to Choose the Right Inverter for Lithium Batteries?

Answer: To choose the right inverter for lithium batteries, match the inverter's voltage and capacity to your battery's specifications, prioritize pure sine wave inverters for ...



Backup Power Options

Yes. There are two options: You can install a separate AC-coupled inverter battery storage system (which is more common and cost effective), or You can replace your current inverter ...

Upgrading to Lithium Batteries: Myths vs. Reality ...

Discover the truth about switching to lithium batteries! Learn if you need new converters, alternator risks, solar compatibility, and cold ...



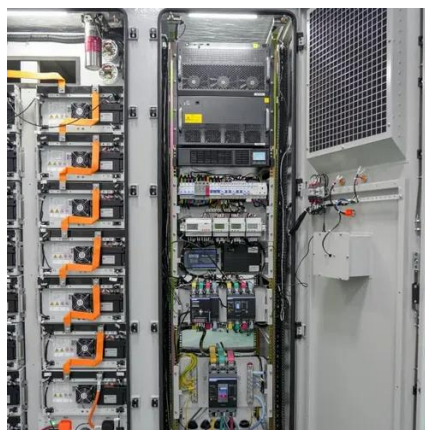
Can Lithium Batteries Work With Any Type of ...

The short answer is no - proper inverter matching is crucial for optimal performance and safety. Let's examine the key compatibility ...



Compatibility of Lithium-Ion Batteries with Existing ...

This blog post will walk you through the essentials of ...



Upgrading to Lithium Batteries: Myths vs. Reality for RV & Solar

Discover the truth about switching to lithium batteries! Learn if you need new converters, alternator risks, solar compatibility, and cold-weather tips. Real-world tests reveal ...

Why I Switched to Lithium Ion Batteries for My Inverter: An ...

After researching, I decided to go with a lithium-ion battery for my inverter, and I can confidently say that it was one of the best decisions I made. One of the most significant advantages I ...





Contact Us

For inquiries, pricing, or partnerships:

<https://sccd-sk.eu>

Phone: +32 2 808 71 94

Email: info@sccd-sk.eu

Scan QR code for WhatsApp.

