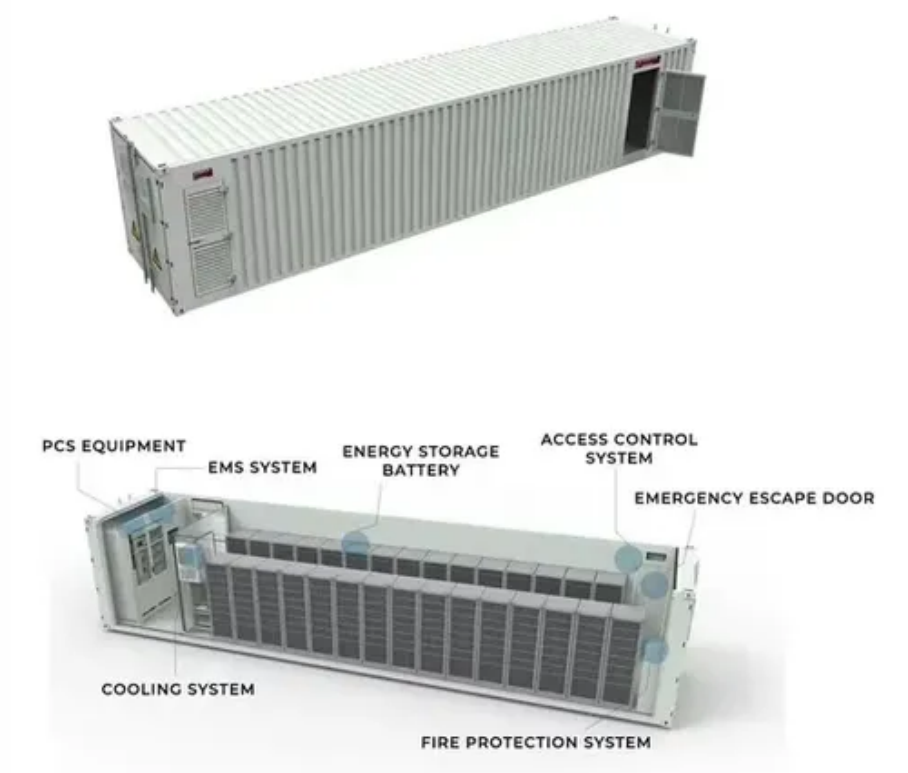




Size of solar panels on rural house roofs





Size of solar panels on rural house roofs



[Roof Solar Panel Size Guide for Homeowners](#)

This guide explains typical panel dimensions, how to calculate required roof area, and design considerations to optimize a residential solar array for American homes.

Solar Panel Sizes: Choosing the Right Dimensions for Any Project

Choosing the right solar panel size can make or break your system's performance. In this guide, we break down how to match your energy needs, roof space, and budget with ...



[Solar Panel Size Guide , Best Panel Size for Your Roof](#)

Learn how to choose the ideal solar panel size for your home. Get expert tips, standard dimensions, and a size chart to simplify your solar decisions.



[Perfect Solar Panel Sizes for Your Home \(Expert Sizing Guide\)](#)

Most residential panels weigh between 40 to 50 pounds, which is well within the structural capacity of most properly maintained roofs. This means a



typical 10-panel system ...



[Solar Panel Size Guide: Find the Best Fit for Your Roof](#)

Learn how solar panel size impacts roof fit, efficiency, and savings. Discover the best size for your home with our expert guide.

[How much solar power can my roof generate?](#)

Assuming all of the roof space you've got is usable for solar (which, again, usually isn't the case), that's 42 panels (850 square feet divided by 20 square feet per panel). ...



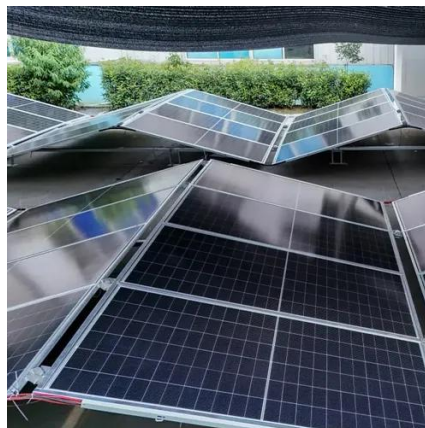
[Roof Solar Panel Size: How to Choose and Calculate Panel ...](#)

Choosing the right roof solar panel size involves balancing available roof area, energy goals, local codes, and roof orientation. This guide explains typical panel dimensions, ...



[Rooftop Solar Panel Size and Layout Guide](#)

Standard modules: Typically range from 400-550W, with relatively compact dimensions. They are suitable for residential or small to medium rooftops, offering flexible ...



[Solar Panel Size & Dimensions Guide 2025 Complete Specs](#)

Standard Residential Panels Optimize Space and Handling: The industry-standard 60-cell panel dimensions (65" × 39" × 1.5") aren't arbitrary - they represent the optimal ...

How many solar panels will fit on your roof? A complete guide to

Based on 3D modeling of your roof and nearby trees, the tool will estimate how much of your roof is available for solar panels. The estimate might not be 100% accurate, but it ...





Contact Us

For inquiries, pricing, or partnerships:

<https://sccd-sk.eu>

Phone: +32 2 808 71 94

Email: info@sccd-sk.eu

Scan QR code for WhatsApp.

