



# Solar curtain wall installation angle





## Overview

---

To achieve optimal performance from wall-mounted solar panels, the most suitable tilt angle typically ranges between 30 and 45 degrees, although this can vary. 1, The angle can strongly influence solar capture efficiency, as panels are designed to maximize exposure to sunlight.

To achieve optimal performance from wall-mounted solar panels, the most suitable tilt angle typically ranges between 30 and 45 degrees, although this can vary. 1, The angle can strongly influence solar capture efficiency, as panels are designed to maximize exposure to sunlight.

This essay provides an overview of various photovoltaic (PV) curtain wall and awning systems, highlighting their components, structural designs, and key installation features. It covers point-supported, unitized, double-layer, and open PV curtain walls, as well as awning solar panel layouts. These.

Welcome to HIITIO's latest installation guide video! In this comprehensive tutorial, we delve into the intricacies of installing photovoltaic curtain walls. Learn step-by-step instructions, expert tips, and best practices to seamlessly integrate solar technology into architectural designs.

Solar First Group is pleased to present our latest instructional animation detailing the standardized installation process for Building Integrated Photovoltaics (BIPV) curtain wall systems. Our diverse portfolio—encompassing solar power generation systems, integrated smart energy solutions.

Curtain walling refers to a non-structural cladding system made from fabricated aluminum, commonly used on the outer walls of tall multi-storey buildings. This lightweight material offers ease of installation and can be customized to be glazed, opaque, or equipped with infill panels. The aluminum.

In general, solar panels should be installed so the sunlight hits them at as close to a perpendicular 90-degree angle for as long as possible during the day. To achieve that goal, most solar panels face the equator and are installed at an angle between 30 to 45 degrees relative to the horizon. For.

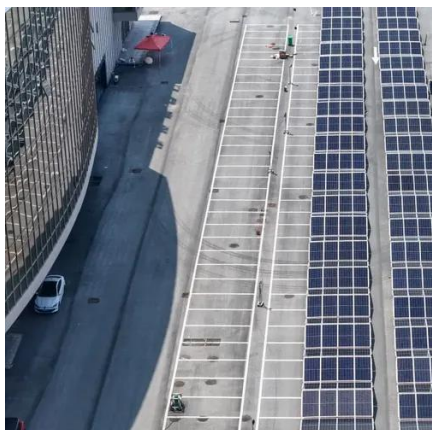
Generally, the best angle for solar panels is equal to your latitude. For example, if



you live at a latitude of 40 degrees north, your panels should be tilted at a 40-degree angle. Yet the sun's position in the sky changes throughout the year, and so does the ideal angle – steeper in winter and.



## Solar curtain wall installation angle



### [How to Install PV Curtain Walls and Solar ...](#)

This essay provides an overview of various photovoltaic (PV) curtain wall and awning systems, highlighting their components, structural ...

### [How many degrees is suitable for wall-mounted solar panels](#)

To achieve optimal performance from wall-mounted solar panels, the most suitable tilt angle typically ranges between 30 and 45 degrees, although this can vary. ...



### [How to Install PV Curtain Walls and Solar Awnings?](#)

This essay provides an overview of various photovoltaic (PV) curtain wall and awning systems, highlighting their components, structural designs, and key installation features.

## Optimization design of a new polyhedral photovoltaic curtain wall

...

Results show that, in low-latitude regions, south-facing polyhedral photovoltaic curtain walls



require larger opening angles of the upper inclined surfaces to achieve maximum ...



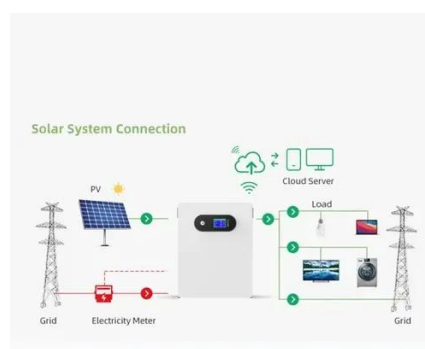
### [Photovoltaic curtain wall installation guide](#)

Learn step-by-step instructions, expert tips, and best practices to seamlessly integrate solar technology into architectural designs.



### [How to Find the Best Orientation and Angle of Solar Panels?](#)

Putting solar panels at the optimal angle and to the best orientation is essential to obtain the maximum energy in a solar power system. To maximize the energy conversion efficiency, use ...



### [How to Install PV Curtain Walls and Solar Awnings?](#)

This essay provides an overview of various photovoltaic (PV) curtain wall and awning systems, highlighting their components, structural designs, and key installation features. It covers point ...





## Curtain Walls & Spandrels

Curtain walling refers to a non-structural cladding system made from fabricated aluminum, commonly used on the outer walls of tall multi-storey buildings. This lightweight material offers ...



## [Installation Video of BIPV Curtain Wall](#)

Solar First Group is pleased to present our latest instructional animation detailing the standardized installation process for Building Integrated Photovoltaics (BIPV) curtain wall ...



## Optimal Solar Panel Angle: Maximizing Efficiency and Energy ...

To maximize solar savings, tilt your panels to match your home's latitude. This angle, usually between 30 and 45 degrees, ensures your solar panels catch the most sunlight ...



## [The Best Angle for Solar Panel Installation](#)

In general, solar panels should be installed so the sunlight hits them at as close to a perpendicular 90-degree angle for as long as possible during the day. To achieve that goal, ...



Deye inverters and Deye batteries are more compatible.



## Contact Us

---

For inquiries, pricing, or partnerships:

<https://sccd-sk.eu>

Phone: +32 2 808 71 94

Email: [info@sccd-sk.eu](mailto:info@sccd-sk.eu)

Scan QR code for WhatsApp.

