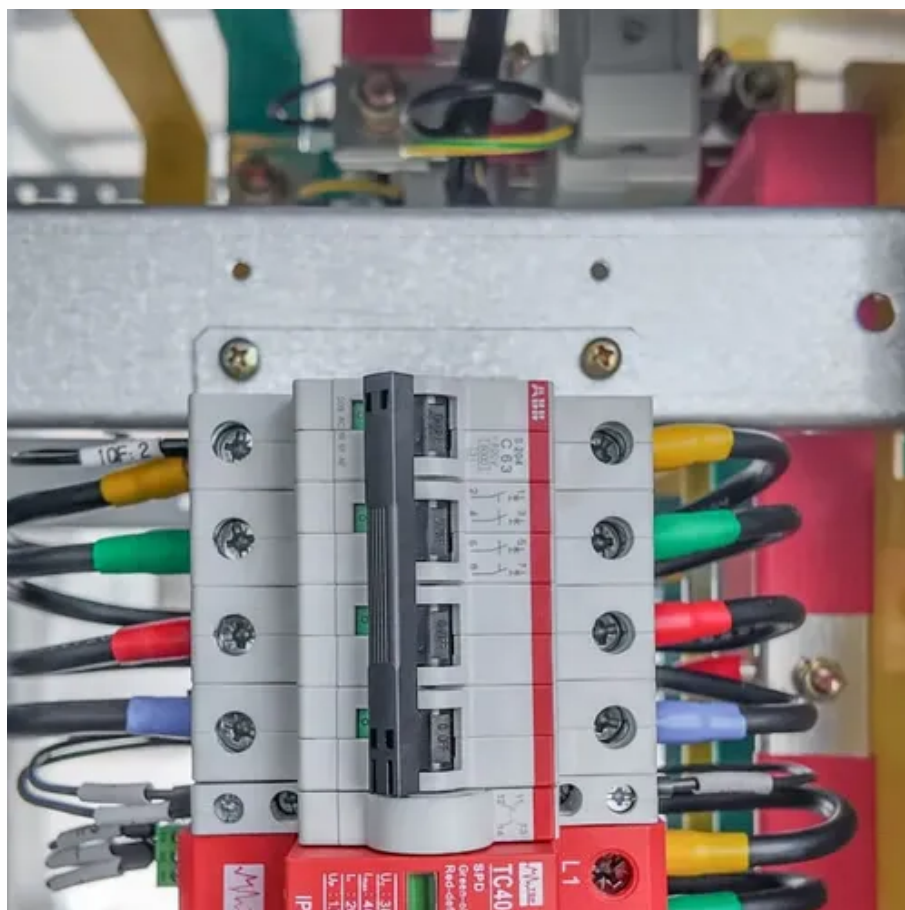




Solar inverter structure layout





Overview

A solar inverter or photovoltaic (PV) inverter is a type of power inverter which converts the variable direct current (DC) output of a photovoltaic solar panel into a utility frequency alternating current (AC) that can be fed into a commercial electrical grid or used by a local, off-grid electrical network. It is a critical (BOS)-component in a solar power system, allowing the use of ordinary electrical equipment.

What is a solar inverter?

A solar inverter or photovoltaic (PV) inverter is a type of power inverter which converts the variable direct current (DC) output of a photovoltaic solar panel into a utility frequency alternating current (AC) that can be fed into a commercial electrical grid or used by a local, off-grid electrical network.

What is a solar inverter circuit diagram?

The solar inverter circuit diagram represents the schematic design of how the various components of a solar inverter are connected and function together. The solar inverter circuit diagram typically includes the following components: Solar Panels: These are the devices that capture sunlight and generate direct current (DC) electricity.

How do you design a solar inverter circuit?

Designing an on grid solar inverter circuit involves a multidisciplinary approach, integrating principles of power electronics, control systems, and electrical engineering.

What are the components of a solar inverter?

The components of a solar inverter include IGBTs (Insulated Gate Bipolar Transistors) in an H-bridge configuration, a step-up transformer (in some inverters), and a microcontroller. How does a solar inverter work?

A solar inverter converts power from a DC source, such as a solar panel, into AC power using IGBTs in an H-bridge configuration.



Solar inverter structure layout

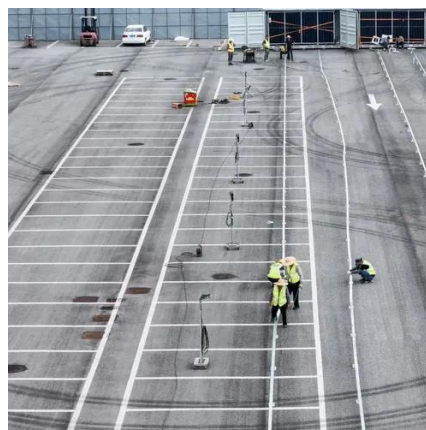


Solar On Grid Inverter Circuit Design

The structure of solar grid tie inverter is presented in the following diagram, consisting of front-end DC/DC inverters and back-end ...

How to Use Solar Inverter: Examples, Pinouts, and Specs

Learn how to use the Solar Inverter with detailed documentation, including pinouts, usage guides, and example projects. Perfect for students, hobbyists, and developers integrating the Solar ...



Solar inverters (string and central)

Discover ST's solutions and ICs for your string or central solar inverter system design, including SiC MOSFETs, IGBTs, power modules, microcontrollers and connectivity solutions.

Key points of photovoltaic inverter structure design

The paper proposes an effective layout for ground-mounted photovoltaic systems with a gable structure and inverter oversizing, which allows an



optimized use of the



Solar inverter

Overview
Classification
Maximum power point tracking
Grid tied solar inverters
Solar pumping inverters
Three-phase-inverter
Solar micro-inverters
Market

A solar inverter or photovoltaic (PV) inverter is a type of power inverter which converts the variable direct current (DC) output of a photovoltaic solar panel into a utility frequency alternating current (AC) that can be fed into a commercial electrical grid or used by a local, off-grid electrical network. It is a critical balance of system (BOS)-component in a photovoltaic system, allowing the use of ordinary...

[Understanding the Solar Inverter Circuit Diagram: A ...](#)

Find out how a solar inverter circuit diagram works, learn the components and connections in the circuit, and understand the role of an inverter in converting DC power from solar panels into ...



Solar Inverters

View information from Microchip about designing and deploying solar inverters, including block diagrams and design resources.



[Inverter Topologies and Switching Devices](#)

Think of an inverter's topology as the strategic layout of its internal components. This isn't just about where parts are placed; it's the fundamental circuit design that dictates ...



[Solar On Grid Inverter Circuit Design](#)

The structure of solar grid tie inverter is presented in the following diagram, consisting of front-end DC/DC inverters and back-end DC/AC inverters.

[Solar Inverter Block Diagram Explained Easily](#)

Discover the components and workings of a solar inverter with our clear and concise solar inverter block diagram, tailor-made for Kenya's solar enthusiasts.





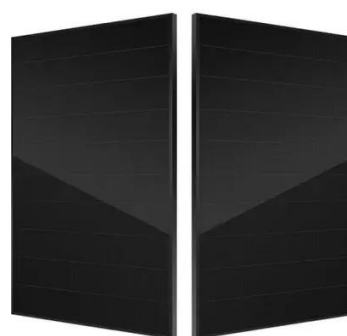
Structure and classification of solar inverters - Volt Coffer



The structure of a multi-level non isolated solar inverter is shown in Figure 5: the direct current output from the photovoltaic array is first converted into higher voltage direct ...

Solar inverter

A solar inverter or photovoltaic (PV) inverter is a type of power inverter which converts the variable direct current (DC) output of a photovoltaic solar panel into a utility frequency ...





Contact Us

For inquiries, pricing, or partnerships:

<https://sccd-sk.eu>

Phone: +32 2 808 71 94

Email: info@sccd-sk.eu

Scan QR code for WhatsApp.

