



Solar panel 200MW size





Overview

In this article, we will delve into the physical size of a 200 watt solar panel, typically ranging from 3 to 4 feet in length and 2 to 3 feet in width. We will explore how these dimensions impact installation, efficiency, and overall energy production.

In this article, we will delve into the physical size of a 200 watt solar panel, typically ranging from 3 to 4 feet in length and 2 to 3 feet in width. We will explore how these dimensions impact installation, efficiency, and overall energy production.

A 200W solar panel typically measures around 5-6 feet in length and 2-3 feet in width, though dimensions can vary slightly between manufacturers. These panels usually consist of 60-72 photovoltaic cells made from monocrystalline or polycrystalline silicon. Monocrystalline panels tend to be more.

There are 3 standardized sizes of solar panels, namely: 60-cell solar panels size. The dimensions of 60-cell solar panels are as follows: 66 inches long, and 39 inches wide. That's basically a 66×39 solar panel. But what is the wattage?

That is unfortunately not listed at all. 72-cell solar panel.

Solar panel “size” actually refers to two key measurements: These two factors work together to determine your system’s efficiency, cost, and performance. The trick is finding the right balance for your specific project type and goals. Physical Size: 51-102 cm long, 41-66 cm wide (typical range).

Panel “Size” vs Physical Dimensions: The most critical distinction for homeowners is that solar panel “size” refers to electrical output (measured in watts), not physical measurements. A 400W panel has the same physical footprint whether it produces 350W or 450W - the difference lies in cell.

200 watt Solar Module (GP-PV-200M) High-Efficiency | Go Power! Aluminum framed solar module. Available in our most popular rooftop kits and systems, including: The GP-PV-200M, a 200-watt Solar Panel from Go Power!, is a high-efficiency monocrystalline solar module that provides outstanding.



The Rich Solar MEGA 200 Solar Panel is a premium monocrystalline module that is engineered for 12V off-grid and grid-tie applications. Designed to maximize energy capture even in low-light conditions, this powerful 200W output features a 19.9% efficiency rating . Advanced solar cell technology and.



Solar panel 200MW size

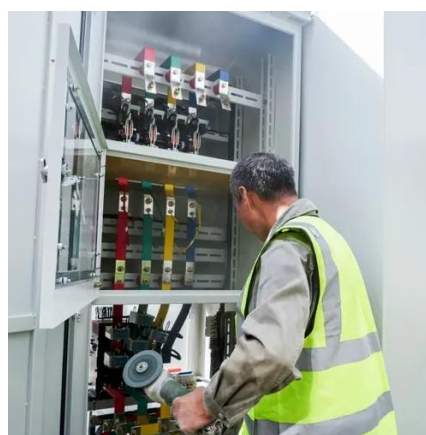


Solar Panel Sizes: Choosing the Right Dimensions for Any Project

Choosing the right solar panel size can make or break your system's performance. In this guide, we break down how to match your energy needs, roof space, and budget with ...

200 Watt Solar panels for sale , Prices, dimensions, weight, ...

The RT200WM is a solar panel manufactured by Runtech Solar. This [] The CIGS Flex Module is a flexible, lightweight solar panel produced [] The SN-DRG-F200W/250W by Sinoltech is a ...



[Standard Solar Panel Sizes And Wattages \(100W ...](#)

To bridge that gap of very useful knowledge needed, we have compared and averaged the sizes of 100-watt to 500-watt solar panels available on the ...

[Solar Panel Size & Dimensions Guide 2025 , Complete Specs](#)

Solar panel size is measured in watts (W) and indicates how much electricity the panel can produce under standard test conditions. Here's the key distinction every homeowner ...



[All You Need to Know About 200w Solar Panels](#)

Their moderate size makes them accessible to DIY installers and mobile users, while their output capacity can meaningfully contribute to home energy needs. As solar ...



[How Big is a 200 Watt Solar Panel? Dimensions and Benefits](#)

In this article, we will delve into the physical size of a 200 watt solar panel, typically ranging from 3 to 4 feet in length and 2 to 3 feet in width. We will explore how these ...



[Rich Solar RS-M200 200 Watt, 12V Multicrystalline ...](#)

The Rich Solar MEGA 200 Solar Panel represents a top-tier choice for those seeking efficiency, durability, and high power output in a reliable, all ...



MEGA 200 Solar Panel , RICH SOLAR



Our solar panels are built to endure it all. With an ultra-wide temperature range of -40°F to 185°F, 2400 Pa wind resistance, 5400 Pa snow load capacity, and hail impact protection up to 35 mm ...



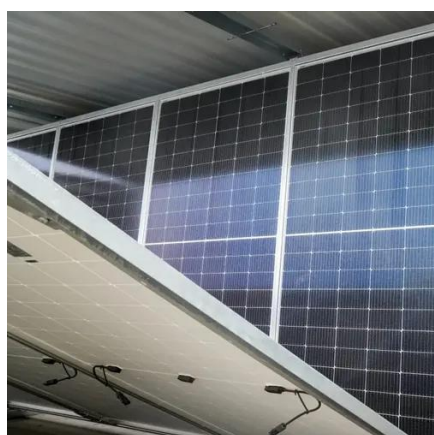
MEGA 200 Solar Panel , RICH SOLAR

Our solar panels are built to endure it all. With an ultra-wide temperature range of -40°F to 185°F, 2400 Pa wind resistance, 5400 Pa snow load ...



Rich Solar RS-M200 200 Watt, 12V Multicrystalline Solar Panel

The Rich Solar MEGA 200 Solar Panel represents a top-tier choice for those seeking efficiency, durability, and high power output in a reliable, all-purpose solar module. Its advanced features ...



200 watt Solar Module (GP-PV-200M)

Our largest aluminum framed solar panel. Available in our most popular rooftop kits and systems, and part of the Solar on Board pre-install program.

[Best 200-Watt Solar Panels: Expert Guide](#)



[- SolarReviews](#)

Several kinds of 200-watt solar panels are available, from rigid panels with silicon cells to portable solar panels with advanced thin-film technology. These options let you choose the right panel ...



[Solar Panel Sizes: Choosing the Right Dimensions ...](#)

Choosing the right solar panel size can make or break your system's performance. In this guide, we break down how to match your ...



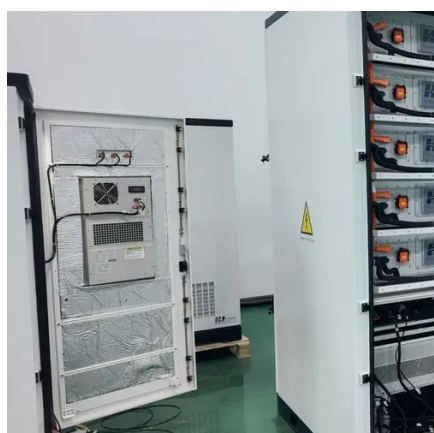
[Best 200-Watt Solar Panels: Expert Guide](#)

Several kinds of 200-watt solar panels are available, from rigid panels with silicon cells to portable solar panels with advanced thin-film technology. ...



[Standard Solar Panel Sizes And Wattages \(100W-500W ...](#)

To bridge that gap of very useful knowledge needed, we have compared and averaged the sizes of 100-watt to 500-watt solar panels available on the market. The goal here is to get to the ...





Contact Us

For inquiries, pricing, or partnerships:

<https://sccd-sk.eu>

Phone: +32 2 808 71 94

Email: info@sccd-sk.eu

Scan QR code for WhatsApp.

