



Solar panel 250 size





Overview

A typical 250-watt solar panel measures approximately 1.6 meters by 1 meter (or about 65 inches by 39 inches). This size is designed to optimize energy production while remaining manageable for installation on residential and commercial rooftops.

A typical 250-watt solar panel measures approximately 1.6 meters by 1 meter (or about 65 inches by 39 inches). This size is designed to optimize energy production while remaining manageable for installation on residential and commercial rooftops.

Knowing the size of a 250-watt panel can help you assess how many panels you might need to install to power your home or business effectively. It also plays a crucial role in planning your roof space, evaluating installation costs, and understanding the overall efficiency of your solar energy.

The TSPP250 by Tesla is an innovative and advanced solar panel that [.] The RT200WM is a solar panel manufactured by Runtech Solar. This [.] The SN-DRG-F200W/250W by Sinoltech is a groundbreaking solar panel [.] The SKT250M6-24 is a high-efficiency monocrystalline solar panel [.].

250-watt solar panels are rarely used in new rooftop solar installations in 2025. A 250-watt solar panel will produce approximately 1 kWh of solar power per day, depending on your geographic location and shading. To cover the energy requirements of the average American household you will need.

Let's consider what that means when you're working with 250-watt solar panels, which have average dimensions of 3.25 feet by 5.5 feet (covering about 18 square feet each). You would need roughly 720 square feet of usable roof space to install a 10-kW system, which many residential properties simply.

Harnessing solar energy with a 250 Watt Solar Panel is clean, sustainable, and infinitely available. In today's rapidly shifting energy landscape, there's a growing need for renewable energy solutions, and solar power leads the charge. We're at an intriguing juncture in the world of energy. Have.

A 250-watt solar panel can generate up to 250 watt-hours of energy in an hour of



perfect sunlight. But what does that really mean for your household?

Let's take a look at some common appliances and see how long you could power them with just one hour of peak solar generation: Energy-efficient LED.



Solar panel 250 size

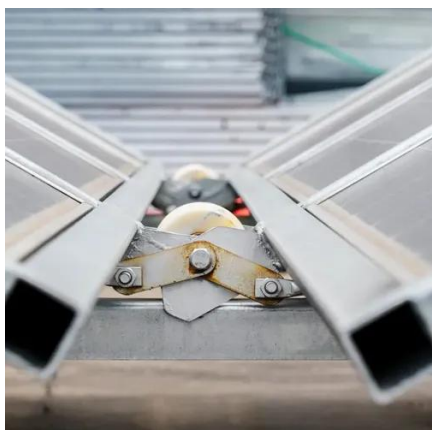


250w solar panels

In the end, 250-watt solar panels offer a balanced choice for many households: they're affordable, compact, and easy to install. While they might not have the raw power of ...

[250 Watt Solar Panel: An Ultimate Guide](#)

What are the Features of a 250 Watt Solar Panel?
A 250-watt solar panel typically has about 60 solar cells and measures roughly 1.6 by 1 meter.



[What Size Is A 250-Watt Solar Panel?](#)

What Size Is A 250-Watt Solar Panel? The standard size of a 250-watt solar panel is approximately 17.5 ft² (1.62 m²); its dimensions are 65 x 39 inches (about 1651 x 991 mm).

250 Watt Solar panels for sale , Prices, dimensions, weight, ...

250 Watt Solar panels' range of prices, dimensions, sizes, voltage output, specifications datasheets Ranges of information Voltage: 7.62V ~ 137V Amp: 1.82A ~ 14.45A



[Should You Buy 250-Watt Solar Panels?](#)

We'll walk you through everything you need to know about 250-watt solar panels so you can decide whether they're right for you.



[How Big is a 250 Watt Solar Panel? Dimensions and Benefits](#)

A typical 250-watt solar panel measures approximately 1.6 meters by 1 meter (or about 65 inches by 39 inches). This size is designed to optimize energy production while ...



[Standard Solar Panel Sizes And Wattages \(100W ...](#)

To bridge that gap of very useful knowledge needed, we have compared and averaged the sizes of 100-watt to 500-watt solar panels available on the ...

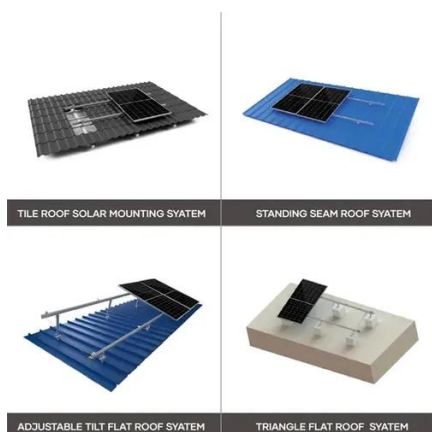


[Perfect Solar Panel Sizes for Your Home](#)



(Expert Sizing Guide)

Most residential solar panels measure between 65 to 75 inches long and 39 to 41 inches wide, delivering power outputs ranging from 250 to 400 watts per panel.



Should You Buy 250-Watt Solar Panels?

Solar energy systems consisting of 250-watt solar panels may be suitable for very low energy usage households (under 6,000 kWh annually). But you may have to look for higher wattage ...

250-watt Solar Panels: What to Know (2026) , ConsumerAffairs®

We'll walk you through everything you need to know about 250-watt solar panels so you can decide whether they're right for you.



250 Watt Solar Panel

Sun-In-One(TM) Solar Panels are made of the highest quality silicon materials for high module conversion efficiency (20%) and long term output stability and reliability. The unique frame ...

Standard Solar Panel Sizes And Wattages



(100W-500W ...

To bridge that gap of very useful knowledge needed, we have compared and averaged the sizes of 100-watt to 500-watt solar panels available on the market. The goal here is to get to the ...





Contact Us

For inquiries, pricing, or partnerships:

<https://sccd-sk.eu>

Phone: +32 2 808 71 94

Email: info@sccd-sk.eu

Scan QR code for WhatsApp.

