



# Solar panel 540 specifications





## Overview

---

A large-format, 144 half-cut M10 mono-PERC module delivering 540 W (STC) at ~21 % efficiency. It's built on Waaree's Tier-1, ALMM-listed production line, carries a 1500 V DC rating for long strings, and comes with a 12-year product / 25-year linear power warranty (-0.34 % / yr).

A large-format, 144 half-cut M10 mono-PERC module delivering 540 W (STC) at ~21 % efficiency. It's built on Waaree's Tier-1, ALMM-listed production line, carries a 1500 V DC rating for long strings, and comes with a 12-year product / 25-year linear power warranty (-0.34 % / yr).

SEG Solar is a leading manufacturer of high-performance solar panels for residential, commercial, and utility applications. help customers reduce their energy costs and carbon footprint. 24.5mm 96in] [0 5.

Too many choices of suppliers and products?

Let our team find suppliers for you, for free! Too many choices of suppliers and products?

Let our team find suppliers for you, for free! .

Harness the sun's power to cut electricity bills and embrace clean energy. Reliable, efficient panels offer a sustainable way to get power and build a brighter future. Have Questions?

Call us now: We use Priority and Ground services on all shipments within the contiguous United States unless.

A PV module from ZNShine needs about 28 ft<sup>2</sup> of space, and you need only 11 of them to build a 6 kW system. The math: 28 ft<sup>2</sup> × 11 modules = 308 ft<sup>2</sup>. You save 50 ft<sup>2</sup>, enough to install two more 540 W modules. Installing 540 W solar panels is simple enough, despite their larger size compared to.

A large-format, 144 half-cut M10 mono-PERC module delivering 540 W (STC) at ~21 % efficiency. It's built on Waaree's Tier-1, ALMM-listed production line, carries a 1500 V DC rating for long strings, and comes with a 12-year product / 25-year



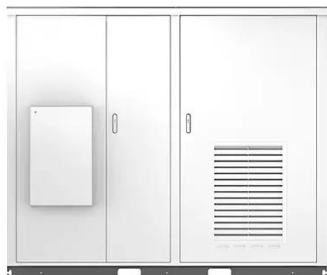
linear power warranty (-0.34 % / yr after year 1). The.

Bluebird Solar manufactures cutting-edge technology-based 540 Watt Solar Panels, delivering exceptional performance and efficiency. These solar modules are equipped with a state-of-the-art 144-cell configuration, 10BB technology, and Mono PERC cells, ensuring maximum sunlight absorption and.



## Solar panel 540 specifications

Solar

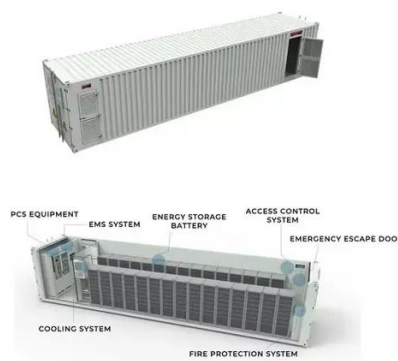


### [LONGi 540W Solar Panel Complete Guide: LR5-72HBD-540M ...](#)

As one of the most sought-after solar panels in 2025, this comprehensive guide examines everything you need to know about the LONGi 540W, from technical specifications ...

### 540W Bifacial Mono PERC Solar Panel

Take control of your energy costs with our high-efficiency 540W monocrystalline solar panel. With a rated voltage of 41.39V and a rated current of 13.05A, this panel is designed to deliver ...



### [WAAREE 540Wp 144 Cells 24 Volts Mono PERC Solar Module](#)

A large-format, 144 half-cut M10 mono-PERC module delivering 540 W (STC) at ~21 % efficiency. It's built on Waaree's Tier-1, ALMM-listed production line, carries a 1500 V DC rating for long ...

### SEG-(540-555)-BMA-HV\_182\_EN

Fire Type (UL61730):Type1 Hailstone  
ISO14001:2015; ISO9001:2015; ISO45001:2018  
SEG Solar is a leading manufacturer of high-performance solar panels for ...



### [Mono-Perc-Halfcut Solar Panel , 24V Capacity , 540 Wp Power](#)

What are the main technical specifications of the Livguard Mono PERC half cut 24V / 540 Wp panel?  
How do I choose the right wattage/power output solar panel for my home or installation?

## **540 Watt Solar Panels**

To give you an idea, a standard 540 watt solar panel is approximately 88 x 46 inches and tips the scales at around 72 pounds. Most modules with this output rating are ...



### [Bluebird 540 Watt Half Cut Solar Panels](#)

A 540W Half-Cut Solar Panel refers to a photovoltaic panel that has a power output of 540 watts and employs a "half-cut" cell design. In a half-cut design, the solar cells on the panel are ...







## 540 Watt Solar panels for sale

Let our team find suppliers for you, for free!

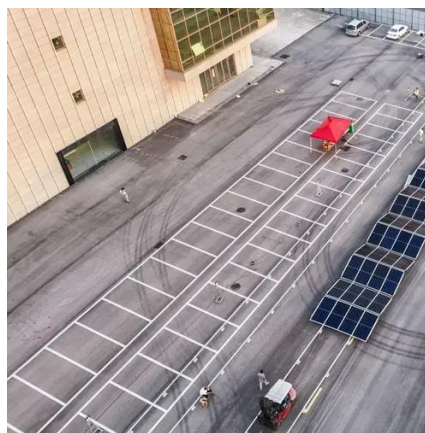


## 540W Bifacial Mono PERC Solar Panel

Take control of your energy costs with our high-efficiency 540W ...

### [MonoPERC Half Cut Panel Series 540/550W](#)

Detailed profile including pictures, certification details and manufacturer PDF.



### [Solar Panel 540 Watt Bi-Facial Mono Perc](#)

Technology decreases the distance between bus bars and finger grid line which is benefit to power increase.





## Contact Us

---

For inquiries, pricing, or partnerships:

<https://sccd-sk.eu>

Phone: +32 2 808 71 94

Email: [info@sccd-sk.eu](mailto:info@sccd-sk.eu)

Scan QR code for WhatsApp.

