



# Solar panel 540w power generation efficiency





## Overview

---

These modules have an efficiency of up to 20.9%, and the double-sided design utilizes the sunlight reflected from the back, offering a power increase of up to 30% on the same surface area. This maximizes power generation, making them ideal for residential and commercial.

These modules have an efficiency of up to 20.9%, and the double-sided design utilizes the sunlight reflected from the back, offering a power increase of up to 30% on the same surface area. This maximizes power generation, making them ideal for residential and commercial.

Increase your solar power generation with our 540W solar modules. These modules have an efficiency of up to 20.9%, and the double-sided design utilizes the sunlight reflected from the back, offering a power increase of up to 30% on the same surface area. This maximizes power generation, making them.

**Bifacial Technology Advantage:** The LONGi 540W's bifacial design can increase energy yield by up to 30% compared to traditional monofacial panels, making it particularly valuable for ground-mount installations with reflective surfaces like white gravel or concrete. **Superior Degradation Resistance:**

**Outstanding Efficiency:** The Longi Solar 540W module boasts remarkable efficiency levels, enabling it to convert sunlight into electricity with unparalleled efficacy.

**High Conversion Rate:** With its advanced technology and engineering, this solar panel achieves a high conversion rate, ensuring.

Bluebird Solar manufactures cutting-edge technology-based 540 Watt Solar Panels, delivering exceptional performance and efficiency. These solar modules are equipped with a state-of-the-art 144-cell configuration, 10BB technology, and Mono PERC cells, ensuring maximum sunlight absorption and.

HiMAX6 solar panels integrate large 210mm half-cut cells with Mono PERC technology, delivering a high power output ranging from 575W to 605W, and achieving power efficiency up to 21.65%. Enabled by Low LID Mono PERC technology, the power degradation is less than 2% in the first year and only 0.55%.



For smaller homes or limited space, 425W panels often fit better. Solar panels comparison helps you see which size matches your goals. Think about your roof size, budget, and how much energy you need. Choose the best solar panels for your space and future plans. Pick 540W panels for big roofs or.



## Solar panel 540w power generation efficiency

---



### [Top 10 Most Efficient Solar Panels of 2025](#)

...

Higher efficiency means more power from less space, which is crucial for businesses aiming to maximise energy production on limited ...

### Longi Solar 540W Datasheet: Specifications, Performance, and Efficiency

In this section, we will explore the efficiency, performance, and key features of the Longi Solar 540W module. This data sheet provides valuable information to understand the capabilities ...



### [540W vs 425W Solar Panels: Power Comparison, Efficiency ...](#)

Solar Panels Comparison: See if 540W or 425W panels suit your roof, energy needs, and budget. Compare power, efficiency, and installation factors

PUSUNG-R (Fit for 19 inch cabinet)



### [Longi Solar 540W Datasheet: Specifications, ...](#)

In this section, we will explore the efficiency, performance, and key features of the Longi Solar 540W module. This data sheet provides valuable



...



### [Top 10 Most Efficient Solar Panels of 2025 \(Ranked by Output\)](#)

Higher efficiency means more power from less space, which is crucial for businesses aiming to maximise energy production on limited roof areas. This list ranks the top ...



### [LONGi 540W Solar Panel Complete Guide: LR5-72HBD-540M ...](#)

Optimal Price-Performance Ratio: At \$0.25-\$0.35 per watt wholesale pricing combined with 21.1% efficiency, the LONGi 540W offers exceptional value for premium solar ...



### [High Efficiency Half-Cut 540W 550W 560W Mono ...](#)

Superior Power Generation HiMAX6 solar panels integrate ...







## [High Efficiency Half-Cut 540W 550W 560W Mono PERC Solar ...](#)

Superior Power Generation HiMAX6 solar panels integrate large 210mm half-cut cells with Mono PERC technology, delivering a high power output ranging from 575W to 605W, and achieving ...



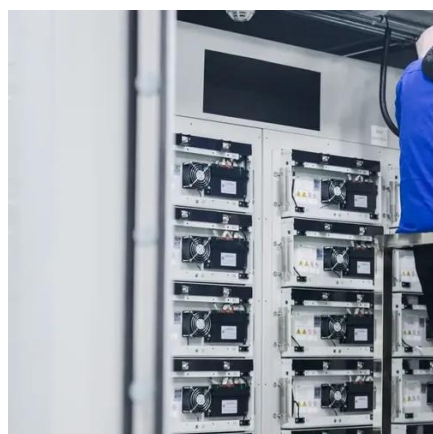
## [High Efficiency Solar Energy Panel 540W](#)

SAKO 535W-550W PV module with 10bb half-cut mono Perc cell technology with multi bus-bar design, improved cells efficiency and get higher output power. The module efficiency up to ...



## **540w Solar Panel Complete Guide: Applications, Types, and ...**

Discover everything about the 540w solar panel: specifications, performance metrics, types, and real-world engineering applications. Learn how this high-efficiency panel powers residential, ...



## **Beny New Energy , BENY-540W , Solar Panel Datasheet , ENF Panel ...**

Increase your solar power generation with our 540W solar modules. These modules have an efficiency of up to 20.9%, and the double-sided design utilizes the sunlight reflected from the ...



## [540W Philadelphia Solar Panels , Home Solar Panels - ...](#)

Experience enhanced energy output with the 540W Bi facial Solar Panel featuring 22.64% efficiency and advanced N-Type Monocrystalline cells. Designed for optimal performance, this ...



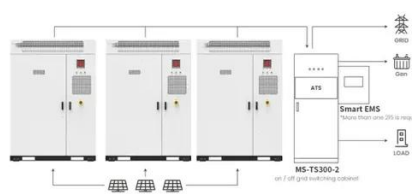
## [Bluebird 540 Watt Half Cut Solar Panels](#)

Discover Bluebird 540W Half Cut Solar Panels for maximum efficiency in residential, industrial and large-scale solar projects. Contact us for pricing.



## [Beny New Energy , BENY-540W , Solar Panel ...](#)

Increase your solar power generation with our 540W solar modules. ...



Application scenarios of energy storage battery products



## Contact Us

---

For inquiries, pricing, or partnerships:

<https://sccd-sk.eu>

Phone: +32 2 808 71 94

Email: [info@sccd-sk.eu](mailto:info@sccd-sk.eu)

Scan QR code for WhatsApp.

