



Spot check of EMS environmental impact assessment of Abkhazia solar container communication station





Spot check of EMS environmental impact assessment of Abkhazia solar



[Requesting SPOT end user role , FCSO Medicare](#)

New end users may follow these instructions for SPOT access AFTER their organization has been created in IDM by the organization's approver.

[IDM: SPOT access/password help and access issues](#)

Where to find help needed to access SPOT, including instructions if you forget your user ID or password and how to reset your password.



[Need Help: Is Spot a good pet insurance?](#)

Need Help: Is Spot a good pet insurance? I lost my 9 year old Male cat to a heart disease this week and I want to take his sister in for a check up along with my two younger ...

[SPOT \(Secure provider online tool\) , FCSO Medicare](#)

Login or register for the SPOT portal; a one-stop shop to your Medicare data. Submit and view status of claims and appeals, find eligibility



details, and more.

GRADE A BATTERY

LiFePO4 battery will not burn when overcharged, over discharged, overcurrent or short circuit and can withstand high temperatures without decomposition.

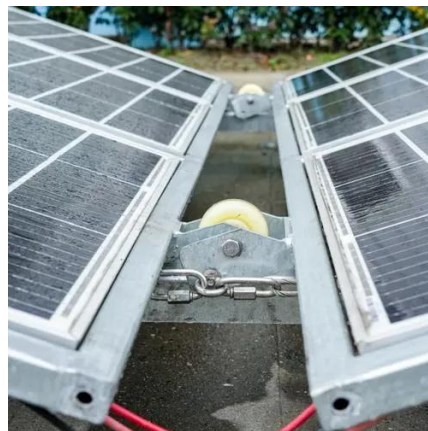


The SPOT User Guide , FCSO Medicare

This user guide is a reference material available to assist users on how to use First Coast's self-service online portal, the

[EDI and SPOT enrollment forms , FCSO Medicare](#)

EDI SPOT Enrollment Form for billing service or clearinghouse (8291P) This form should be completed by billing services and clearinghouses requesting access to SPOT.



[Charlotte Airport Parking "The Spot" good/bad? : r/Charlotte](#)

I use the parking spot a couple times a month and it's incredibly convenient. Best part if you're parking for work is that you earn free days, and usually can park for free for personal travel.



The SPOT User Guide: Section 1

The SPOT: User Guide provides procedural information and representative screen prints, as appropriate, to describe how users may access and utilize the features of SPOT.



SPOT , FCSO Medicare

Approvers may follow these instructions for SPOT access AFTER they have received an approval communication from the SPOT Help Desk based on their new organization form submission.



[How to register for SPOT , FCSO Medicare](#)

Overview of the two-step registration process including the enrollment form links and role descriptions.





Contact Us

For inquiries, pricing, or partnerships:

<https://sccd-sk.eu>

Phone: +32 2 808 71 94

Email: info@sccd-sk.eu

Scan QR code for WhatsApp.

