



Standard distributed solar panel size





Overview

These panels come in a standard size, which is approximately 1650 x 990 mm (65 x 39 inches). They are smaller in size and lighter in weight compared to commercial solar panels. Their compactness makes them easy to install and maintain. They are generally installed on the rooftops of.

These panels come in a standard size, which is approximately 1650 x 990 mm (65 x 39 inches). They are smaller in size and lighter in weight compared to commercial solar panels. Their compactness makes them easy to install and maintain. They are generally installed on the rooftops of.

Standard Residential Panels Optimize Space and Handling: The industry-standard 60-cell panel dimensions (65" x 39" x 1.5") aren't arbitrary - they represent the optimal balance between power output, installation ease, and roof space utilization. At 40-46 pounds, they can be safely handled by.

Most residential solar panels measure between 65 to 75 inches long and 39 to 41 inches wide, delivering power outputs ranging from 250 to 400 watts per panel. Understanding these dimensions is crucial for homeowners planning their solar installation, as panel size directly impacts system.

The size of solar panels and their dimensions are critical components in designing a solar energy system. It is essential to understand the physical characteristics of solar panels for both residential and commercial installations. The size of the solar panel and weight of the solar panel are.

Solar panel size shapes everything from the watts to the ease of lifting a module onto a roof. The insights that follow weigh the gains and compromises of large versus compact panels, helping you choose a size that truly fits - Solar panel size is the key metric of every installation. A standard.

Example: 5kW solar system is comprised of 50 100-watt solar panels. Alright, your roof square footage is 1000 sq ft. Can you put a 5kW solar system on your roof?

For that, you will need to know what size is a typical 100-watt solar panel, right?

To bridge that gap of very useful knowledge needed.



Panels typically contain 60, 72, or 96 individual solar cells. Source: Solar Earth Inc. A high-transparency tempered glass layer shields the cells from the elements (hail, dust, and wind) while enabling sunlight to pass through efficiently. This protective coating (often EVA plastic) surrounds the.



Standard distributed solar panel size

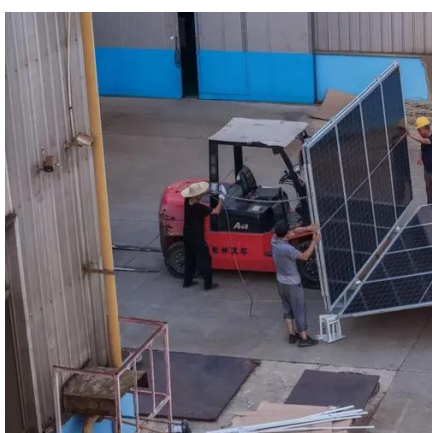
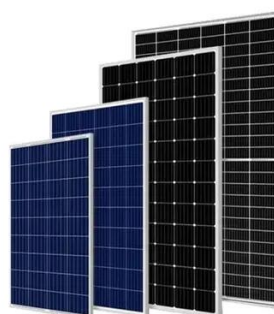


[Detailed Guide to Solar Panel Size & Dimensions](#)

The standard solar panel size is approximately 66 x 39 inches and typically contains 60 cells. For commercial use, panels are usually 77 x 39 inches with 72 cells, offering ...

[Standard Solar Panel Sizes And Wattages \(100W-500W ...](#)

To bridge that gap of very useful knowledge needed, we have compared and averaged the sizes of 100-watt to 500-watt solar panels available on the market. The goal here is to get to the ...



[Detailed Guide to Solar Panel Size & Dimensions](#)

The standard solar panel size is approximately 66 x 39 inches and typically contains 60 cells. For commercial use, panels are usually 77 ...

[What Are the Common Solar Panel Sizes?](#)

Still, most 60-cell solar panels have a size of 39" X 66" and most 72-cell solar panels have sizes of around 39" X 77". However, panels with cell counts of 96, 120, and 144 ...



[Perfect Solar Panel Sizes for Your Home \(Expert Sizing Guide\)](#)

Most residential solar panels measure between 65 to 75 inches long and 39 to 41 inches wide, delivering power outputs ranging from 250 to 400 watts per panel.



[Size of Solar Panels Explained: Residential and ...](#)

These panels come in a standard size, which is approximately 1650 x 990 mm (65 x 39 inches). They are smaller in size and lighter in ...



[Rooftop Solar Panel Size and Layout Guide](#)

Standard modules: Typically range from 400-550W, with relatively compact dimensions. They are suitable for residential or small to medium rooftops, offering flexible ...





[Rooftop Solar Panel Size and Layout Guide](#)

Standard modules: Typically range from 400-550W, with relatively compact dimensions. They are suitable for residential or small to ...



[Standard Solar Panel Sizes And Wattages \(100W ...](#)

To bridge that gap of very useful knowledge needed, we have compared and averaged the sizes of 100-watt to 500-watt solar panels available on the ...

[Solar Panel Size Guide , Best Panel Size for Your Roof](#)

Learn how to choose the ideal solar panel size for your home. Get expert tips, standard dimensions, and a size chart to simplify your solar decisions.



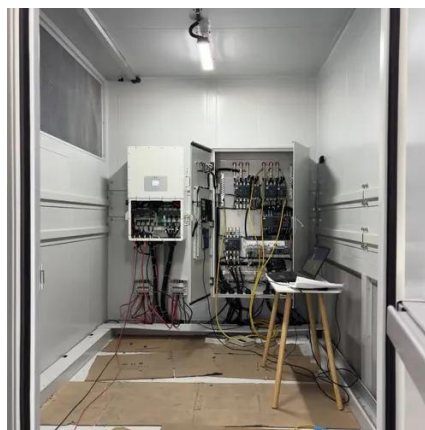
[Solar Panel Size & Dimensions Guide 2025 , Complete Specs](#)

In this comprehensive guide, you'll learn everything you need to know about solar panel sizing, from standard dimensions to weight considerations, helping you determine the ...



Understanding Solar Panel Dimensions In 2025: A Complete Size ...

In this blog, we'll break down the standard sizes of solar panels, explain how panel dimensions impact performance, and help you choose the ideal size for your needs. Why Are ...

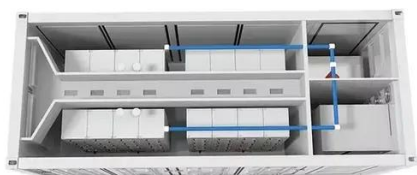


[standard solar photovoltaic panel sizes explained](#)

The standard residential solar photovoltaic panel size you'll see most often is based on a 60-cell configuration, typically measuring about 67 inches long by 40 inches wide. ...

[Solar Panel Size Guide , Best Panel Size for Your ...](#)

Learn how to choose the ideal solar panel size for your home. Get expert tips, standard dimensions, and a size chart to simplify your ...



Size of Solar Panels Explained: Residential and Commercial ...

These panels come in a standard size, which is approximately 1650 x 990 mm (65 x 39 inches). They are smaller in size and lighter in weight compared to commercial solar ...



Contact Us

For inquiries, pricing, or partnerships:

<https://sccd-sk.eu>

Phone: +32 2 808 71 94

Email: info@sccd-sk.eu

Scan QR code for WhatsApp.

