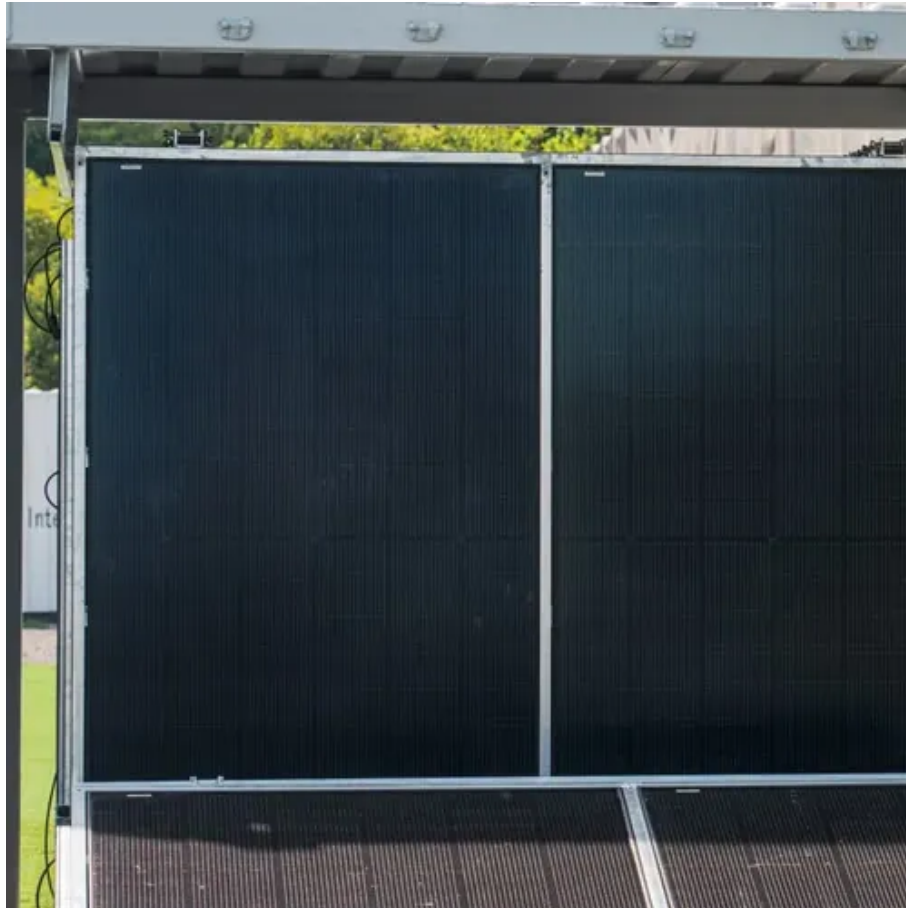




# Subway stations using Nordic folding container grid connection





## Overview

---

NordLink is a subsea 1,400 (MW) power cable between Norway and Germany, opened in May 2021. The 625 kilometres (388 mi) long line operates at a voltage of 500 . It consists of 54 kilometres long land cable in Schleswig-Holstein, Germany, a 516 kilometres long submarine cable between Germany and Norway and a 53 kilometres long overhead line with 140 towers in Norway.

This work expands the conventional understanding of subway stations by introducing innovative design strategies that prioritize spatial organization, crowd management, urban context integration, and multimodal transportation options.

This work expands the conventional understanding of subway stations by introducing innovative design strategies that prioritize spatial organization, crowd management, urban context integration, and multimodal transportation options.

The Nordic Grid Development Perspective (NGDP) is prepared by the Nordic TSOs biennially to present our perspective on the overall trajectory of the Nordic power system. The NGDP is intended to complement the national planning processes and network development plans, and the regional and European.

NordLink is a subsea 1,400 megawatt (MW) HVDC power cable between Norway and Germany, opened in May 2021. [2] The 625 kilometres (388 mi) long line operates at a voltage of 500 kV DC. [3][4] It consists of 54 kilometres long land cable in Schleswig-Holstein, Germany, a 516 kilometres long.

This work expands the conventional understanding of subway stations by introducing innovative design strategies that prioritize spatial organization, crowd management, urban context integration, and multimodal transportation options. Traditional guidelines often neglect these critical aspects.

Each Nordic country is finding its own path to handle grid congestion. They are working to keep up with renewable growth while upgrading the grid to support it. Let's take a closer look at how Denmark, Finland, Norway, Sweden, and Iceland are responding to grid congestion challenges and how they.

In the quiet Dutch town of Barneveld, there's a small but intriguing train station that turns heads—not because of its size or grandeur, but because of its design. Barneveld Noord Station is made from shipping containers. It's not just a practical solution; it's a statement about innovation.



Nurminen Logistics, on March 13th, unveiled a new regular and scheduled railway route in Sweden, seamlessly connecting Umeå and Haparanda to Gothenburg. This multimodal transportation route not only enhances the logistics chain but also brings a new level of convenience and efficiency to businesses.



## Subway stations using Nordic folding container grid connection

---

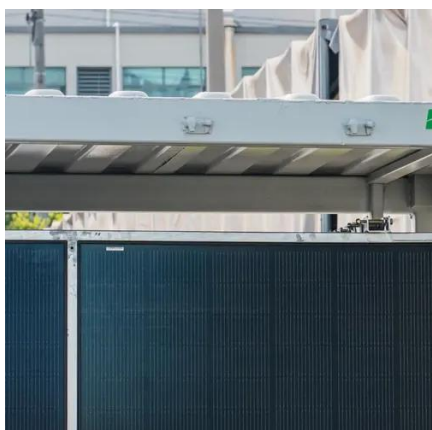


### [Stockholm Metro System: Your Complete Guide to Sweden's ...](#)

Discover the Stockholm Metro, evolving from a few lines in 1950 to 110 kilometers of track today. Learn how it efficiently connects the city.

### [Nordic Grid Development Perspective 2025](#)

Initially requested by the Nordic Council of Ministers, this report is intended for everyone who has an interest in the development of the Nordic transmission grid and the challenges related to ...



### **Barneveld Noord: A Train Station Built from Shipping Containers**

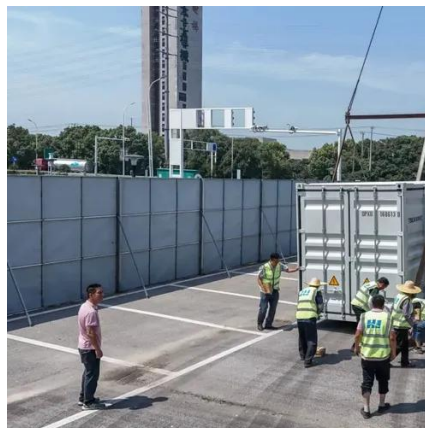
The station's design isn't just about aesthetics or novelty. The shipping containers are easy to transport, quick to install, and simple to replace or reconfigure if the station's needs ...

### **Cross-border transport infrastructure planning in the Nordic ...**

The project covers four Nordic countries (Denmark, Finland, Norway and Sweden) and explores institutional and other challenges and



opportunities associated with better and ...



## Subway

61 reviews for Subway Ashburn, VA - photos, order, reservations, and much more



## [Cross-border transport infrastructure planning in ...](#)

The project covers four Nordic countries (Denmark, Finland, Norway and Sweden) and explores institutional and other challenges and ...



## [Stockholm Metro System: Your Complete Guide to ...](#)

Discover the Stockholm Metro, evolving from a few lines in 1950 to 110 kilometers of track today. Learn how it efficiently connects the city.







## Reimagining Subway Station Design: Beyond Prescriptive ...

This work expands the conventional understanding of subway stations by introducing innovative design strategies that prioritize spatial organization, crowd ...



## **Subway (restaurant)**

Subway IP LLC, [7] trading as Subway, is an American multinational fast food restaurant franchise that specializes in submarine sandwiches (subs) and wraps. It was founded by Fred DeLuca ...

## **NordLink**

NordLink is a subsea 1,400 megawatt (MW) HVDC power cable between Norway and Germany, opened in May 2021. The 625 kilometres (388 mi) long line operates at a voltage of 500 kV DC. It consists of 54 kilometres long land cable in Schleswig-Holstein, Germany, a 516 kilometres long submarine cable between Germany and Norway and a 53 kilometres long overhead line with 140 towers in Norway.



## Subway Is Handing Out BOGO Sandwiches for the Next Week

Fans can get BOGO sandwiches at Subway through Jan. 6 Customers can order two six-inch subs for the price of one with the deal The sandwich chain has three limited-time, ...



## Subway

Discover better-for-you sub sandwiches at SUBWAY®. View our menu of sub sandwiches, see nutritional info, find restaurants, buy a franchise, apply for jobs, order catering and give us ...



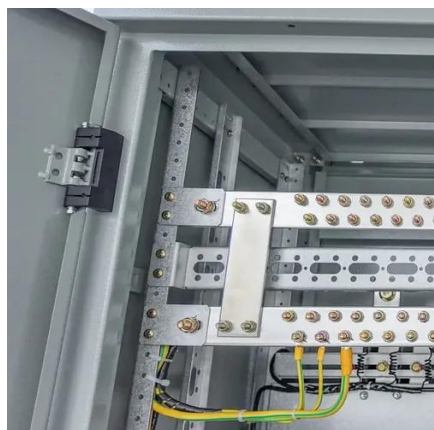
### Barneveld Noord: A Train Station Built from ...

The station's design isn't just about aesthetics or novelty. The shipping containers are easy to transport, quick to install, and simple to ...



### Subway Launches 'Meal of the Day' Deal and New Sandwiches

Subway introduces a Meal of the Day deal, which has a seven day rotating schedule, along with two new, limited-time Baja Bliss sandwiches.



## New Rail link in Sweden

This multimodal transportation route not only enhances the logistics chain but also brings a new level of convenience and efficiency to businesses in the Nordic region.



## Subway

Subway - 42385 Ryan Road in Ashburn, Virginia 20148: store location & hours, services, holiday hours, map, driving directions and more



## Nordic Connector

NORDIC CONNECTOR - The fixed connection between Sweden and Finland across Kvarken. Feasibility study presentation (metocean structures, costs, environmental ...)

[Subway, 44110 Ashburn Shopping Plz. Ashburn, VA 20147, US](#)

Get more information for Subway in Ashburn, VA. See reviews, map, get the address, and find directions.



## Subway in Ashburn, VA

Q Where is Subway located? A Subway is located at 42385 Ryan Road, Suite 102-B, Ashburn, Virginia 20148





## NordLink

"TenneT launches seven transformer transports from Brunsbüttel to Wilster for the NordLink subsea cable connection to Norway". Retrieved 2021-12-06.

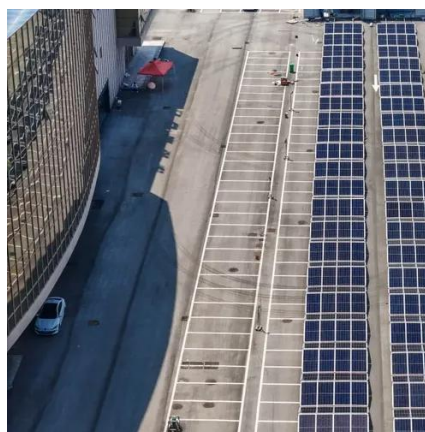


## [Examining grid congestion in the Nordics](#) [-- RatedPower](#)

Find out what causes grid congestion in the Nordics, how each country is tackling the issue, and what the future might look like with a more efficient grid.

## New Rail link in Sweden

This multimodal transportation route not only enhances the logistics chain but also brings a new level of convenience and efficiency ...



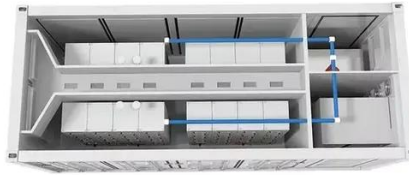
## SUBWAY

SUBWAY - Try Our New Menu - 42385 Ryan Rd, Ste 102-b, Ashburn, VA 20148, 28 Photos, (703) 957-4074, Mon - 9:00 am - 11:00 pm, Tue - 9:00 am - 11:00 pm, Wed - 9:00 am - 11:00 ...



## **BIM processes and workflows using the example of the subway ...**

Abstract Three major technical and economic factors of the "Yellow Line" project of the Stockholm subway network justify the decision to apply a BIM-oriented design: (1) Early optimization and ...





## Contact Us

---

For inquiries, pricing, or partnerships:

<https://sccd-sk.eu>

Phone: +32 2 808 71 94

Email: [info@sccd-sk.eu](mailto:info@sccd-sk.eu)

Scan QR code for WhatsApp.

