



Sucre 10 billion energy storage project





Overview

How much does project Sucre cost in Shreveport?

This project, known as "Project Sucre," will be situated on 2,250 acres of agricultural land, approximately 125 miles east of Shreveport. The data center campus represents a substantial investment, with capital expenditures estimated between \$5 billion and \$10 billion.

Is Sucre a big data center?

And Sucre is not even the biggest. OpenAI is partnering with Oracle, Softbank, Microsoft and others on the Stargate project, which they say will be a \$500 billion, multi-site datacenter expansion, beginning with Abilene, Texas.

What is 'project Sucre'?

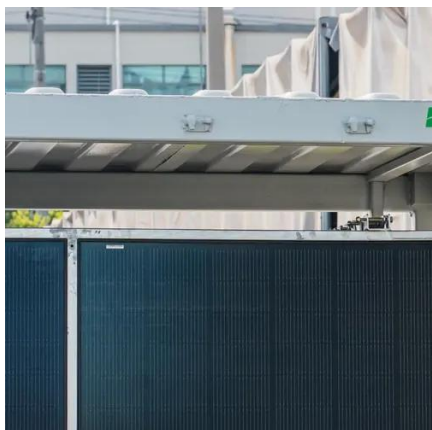
Few details are available at this time, but Axiom reports plans for the campus have been filed through an affiliate known as Laidley, LLC, and is known as "Project Sucre." Citing a public notice, Axiom suggests Meta is targeting more than 2,250 acres of agricultural land off Highway 183 and Thomas Road.

How much electricity does Sucre use?

To power racks lined with thousands of Nvidia H100 GPUs, Sucre will require 2.23 gigawatts of 24/7 electricity (enough to power more than 2 million homes), which utility company Entergy will provide via twin high-efficiency natural gas turbines at a capital cost of \$3.2 billion.



Sucre 10 billion energy storage project



[Meta plans \\$5bn data center campus in Louisiana](#)

Few details are available at this time, but Axiom reports plans for the campus have been filed through an affiliate known as Laidley, LLC, and is known as "Project Sucre."

[Meta planning multi-billion-dollar AI data centre](#)

National news reported that the scheme is called 'Project ...



Entergy Louisiana Eyes 2.2 GW of New Gas-Fired Generation to ...

The company said the project, which it calls Project Sucre, would represent a \$5 billion investment at a minimum and support at least 300 full-time jobs. The group this past ...



[The Trillion-Dollar A.I. Data Center Tsunami ...](#)

This grandest of Meta's 20 worldwide data centers will be ...



Meta planning multi-billion-dollar AI data centre

National news reported that the scheme is called 'Project Sucre' and is planned for a 2,250-acre (911-hectare) site on agricultural property in Richland Parish, Louisiana, US. ...



SUCRE LITHIUM BATTERY ENERGY STORAGE PROJECT

Major projects now deploy clusters of 20+ containers creating storage farms with 100+MWh capacity at costs below \$280/kWh. Technological advancements are dramatically improving ...



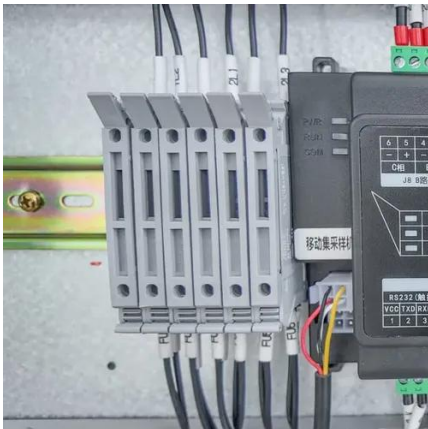
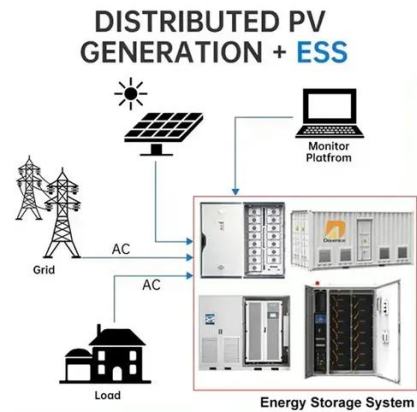
The Trillion-Dollar A.I. Data Center Tsunami --Coming To A

This grandest of Meta's 20 worldwide data centers will be called Sucre (i.e. sweet) and cover 4 million square feet of floor space on 2,250 acres.



Meta Hyperion Campus Data Center in Shreveport (2230 MW)

This project, known as "Project Sucre," will be situated on 2,250 acres of agricultural land, approximately 125 miles east of Shreveport. The data center campus represents a substantial ...

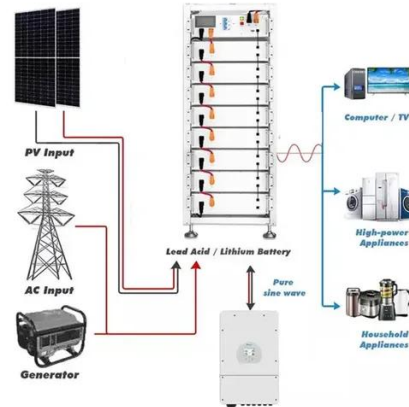


Meta Hyperion Campus Data Center in Shreveport ...

This project, known as "Project Sucre," will be situated on 2,250 acres of agricultural land, approximately 125 miles east of Shreveport. The data ...

Entergy Louisiana Eyes 2.2 GW of New Gas-Fired ...

The company said the project, which it calls Project Sucre, would represent a \$5 billion investment at a minimum and support at least ...



Riding the AI Wave: The Rise of Trillion-Dollar Data Centers

Explore the trillion-dollar AI data center wave with Meta's Sucre project, energy challenges, and environmental commitments highlighted.



The Trillion-Dollar A.I. Data Center Tsunami --Coming To A Field ...

This grandest of Meta's 20 worldwide data centers will be called Sucre (i.e. sweet) and cover 4 million square feet of floor space on 2,250 acres.

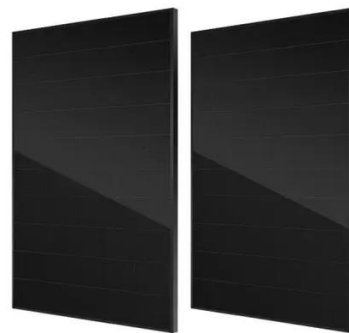


[Meta plans \\$5bn data center campus in Louisiana](#)

Few details are available at this time, but Axiom reports plans for the campus have been filed through an affiliate known as Laidley, ...

[Northwest Louisiana Finance Authority Economic ...](#)

If the Company certifies an additional \$2 billion dollars in Capital Investment on January 1, 2030, the total Capital Investment on the Project (\$10.5 billion) has now reached Level 4.



[Riding the AI Wave: The Rise of Trillion-Dollar ...](#)

Explore the trillion-dollar AI data center wave with Meta's Sucre project, energy challenges, and environmental commitments ...



To land Meta massive data center, Louisiana pulled out all the ...

Meta is building the largest data center in the Western Hemisphere on a sprawling site in rural Northeastern Louisiana. The state offered billions of dollars in tax breaks to win the ...





Contact Us

For inquiries, pricing, or partnerships:

<https://sccd-sk.eu>

Phone: +32 2 808 71 94

Email: info@sccd-sk.eu

Scan QR code for WhatsApp.

