



Ten billion energy storage project in Surabaya Indonesia





Overview

The program focuses on four main areas: policy development, creation of incentive and funding schemes, implementation of energy transition in key industrial sectors such as steel, textiles, pulp and paper, and industrial zones like Surabaya Industrial Estate Rungkut (SIER), as.

The program focuses on four main areas: policy development, creation of incentive and funding schemes, implementation of energy transition in key industrial sectors such as steel, textiles, pulp and paper, and industrial zones like Surabaya Industrial Estate Rungkut (SIER), as.

ed in Singapore, RGE is a global group of companies in the bio-based resources and energy sectors, serving over 100 markets worldwide. With more than US\$35 billion in assets and a workforce of 80,000 employees, our operations span across Indonesia, China, Brazil, Canada, Spain and Malaysia. As a.

Surabaya, Indonesia Sentinel — Surabaya, the capital of East Java, has been selected as a pilot city for energy transition and efficiency efforts in Indonesia. The city officially launched its building sector decarbonization program on April 16, 2025, under the Sustainable Energy Transition in.

Surabaya, 16 April 2025 – Surabaya City, East Java, has officially started the implementation of decarbonization of the building sector through the Sustainable Energy Transition in Indonesia (SETI) project. The project is funded by the German Government and is part of the Indonesia-Germany.

Imelda Tanoto, Managing Director at RGE (right) and Helle Kristoffersen, President Asia and Member of the Executive Committee at TotalEnergies (left) announced a Co-Investment Agreement between RGE and TotalEnergies in the presence of Indonesian President Prabowo Subianto and French President.

The Ministry of Energy and Mineral Resources (ESDM) has revealed that Surabaya City, East Java is a pilot area for the Sustainable Energy Transition in Indonesia (SETI) project, which is a collaboration with the German Government. SETI is a collaborative project between the German and Indonesian.

The Indonesian Ministry of Energy and Mineral Resources (ESDM) has designated



Surabaya and Batam as pilot cities for the Sustainable Energy Transition in Indonesia (SETI) program, a collaborative project with the German government funded by the Federal Ministry for Economic Affairs and Climate. Who is involved in the battery energy storage system project?

Subsidiaries of PLN involved in the Battery Energy Storage System project happen to be the primary electricity providers in Indonesia, such as PT Indonesia Power, PT Pembangkitan Jawa Bali, and others. The plan to develop an energy storage system aligns with the positive growth in the renewable energy industry.

What sustainable initiatives are being implemented at Joyoboyo?

City Secretary Ikhsan highlighted ongoing sustainable initiatives, such as the energy-efficient City Hall building and the Joyoboyo Intermodal Terminal, which utilizes environmentally friendly materials. “We are proud to be chosen as a pioneer in building sector decarbonization,” Ikhsan said during the launch event.

Why should we develop an energy storage system?

The plan to develop an energy storage system aligns with the positive growth in the renewable energy industry. This growth is also visible in countries like Indonesia, where the Central Government has set an optimistic target of 23% usage of renewable energy by 2025.



Ten billion energy storage project in Surabaya Indonesia



Surabaya Designated as Model City for Energy Transition in Indonesia

The SETI project, a joint effort between the Indonesian and German governments, is designed to accelerate the decarbonization of the industrial and building sectors through the ...

[Kementerian ESDM Jadikan Surabaya Sebagai ...](#)

Proyek SETI merupakan kerja sama pemerintah Jerman dan pemerintah Indonesia melalui Direktorat Jenderal EBTKE ESDM dengan ...



[Key Facts about Indonesia's Energy Storage System](#)

The Battery Energy Storage System is a pilot project and is a concrete example of the government's ...

[Key Facts about Indonesia's Energy Storage System](#)

The Battery Energy Storage System is a pilot project and is a concrete example of the government's attempt to shift away from diesel-



generated power and transition to cleaner ...



Kementerian ESDM Jadikan Surabaya Sebagai Kota ...

Proyek SETI merupakan kerja sama pemerintah Jerman dan pemerintah Indonesia melalui Direktorat Jenderal EBTKE ESDM dengan tujuan mendukung dekarbonisasi sektor ...

PRESS RELEASE RGE and TotalEnergies Ink Co ...

ergies received Conditional Approval from the Energy Market Authority of Singapore to import solar energy from Indonesia to Singapore. This initiative also includes a domestic component ...



RGE, TotalEnergies to develop solar power, ...

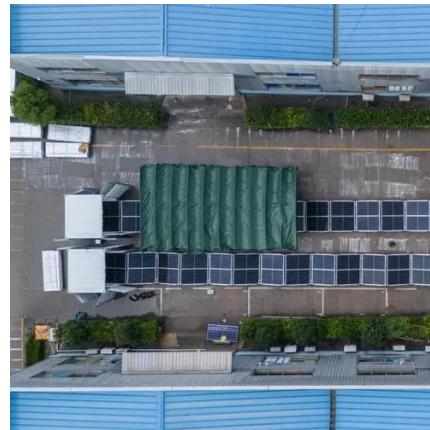
The Co-Investment Agreement outlines the joint development of a solar power plant and battery energy storage project in Indonesia.





Surabaya chosen as pilot city for Indonesia-Germany sustainable energy

The Ministry of Energy and Mineral Resources (ESDM) has revealed that Surabaya City, East Java is a pilot area for the Sustainable Energy Transition in Indonesia ...



Surabaya Selected as Pilot Project for Sustainable Energy ...

Running until 2028, this project aims to establish an effective ecosystem for institutional frameworks, regulations, and energy transition financing.



Surabaya Jadi Proyek Percontohan SETI, Kerja Sama dengan ...

SETI sendiri merupakan proyek kerjasama antara Pemerintah Jerman dan Indonesia melalui pendanaan dari Kementerian Federal Jerman untuk Urusan Ekonomi dan ...



RGE, TotalEnergies to develop solar power, battery energy storage

The Co-Investment Agreement outlines the joint development of a solar power plant and battery energy storage project in Indonesia.





Pemerintah Kota Surabaya

Surabaya dipilih sebagai pilot project implementasi efisiensi energi dan energi terbarukan Proyek SETI karena Pemerintah Kota (Pemkot) Surabaya dinilai mampu ...



Surabaya Designated as Model City for Energy ...

The SETI project, a joint effort between the Indonesian and German governments, is designed to accelerate the decarbonization of ...



Surabaya chosen as pilot city for Indonesia ...

The Ministry of Energy and Mineral Resources (ESDM) has revealed that Surabaya City, East Java is a pilot area for the Sustainable ...



Surabaya Towards a Sustainable City

Surabaya City, East Java, has officially started the implementation of decarbonization of the building sector through the Sustainable Energy Transition in Indonesia ...



Contact Us

For inquiries, pricing, or partnerships:

<https://sccd-sk.eu>

Phone: +32 2 808 71 94

Email: info@sccd-sk.eu

Scan QR code for WhatsApp.

