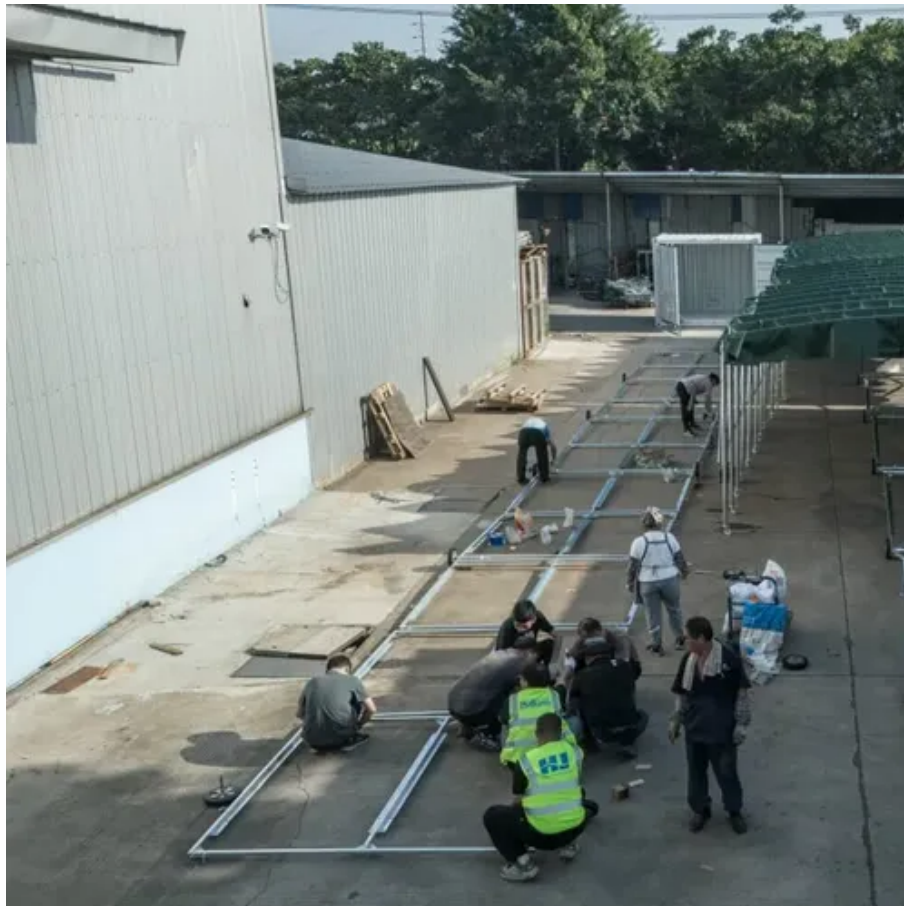




The role of the 800m trunking communication system base station





Overview

The base station is responsible for transmitting and receiving radio signals to and from mobile radios within its coverage area. When a user initiates a call or data transmission, the mobile radio sends a signal to the base station, which then routes the signal to the appropriate.

The base station is responsible for transmitting and receiving radio signals to and from mobile radios within its coverage area. When a user initiates a call or data transmission, the mobile radio sends a signal to the base station, which then routes the signal to the appropriate.

A central-controlled trunked system uses a control channel (as shown). Another type, scan based trunked systems, (not shown) do not have a control channel. Frequencies are for discussion purposes and do not correspond to any specific system. A trunked radio system (TRS) is a two-way radio system.

Designed for wireless mobile communication, TETRA (Terrestrial Trunked Radio) is a robust system widely used in mission-critical operations, offering reliable and secure communication across vast areas. This tutorial delves into the core components and functionalities of the TETRA radio system.

BF-TR952 is the distributed base station that separates the baseband unit (BBU) and remote radio unit (RRU) from the equipment layer and utilizes optical channels to transmit signals more stably. It's flexibly applied to large-scale signal deployment for lower construction cost, faster.

Hytera DMR Tier III Trunking, developed from the ETSI DMR open standard, is an IP based Digital Trunked Platform specifically designed to provide mission critical voice, data, dispatching and management capacity across wide geographical areas. With an all-IP architecture and centralized networking.

At the heart of a TETRA network is the base station, which serves as the central hub for communication between mobile radios and the network infrastructure. The base station is typically located at a high point, such as a tower or building, to ensure optimal coverage and range for the network. The.

Terrestrial Trunked RAdio (TETRA) is a digital trunked mobile radio standard



developed to meet the needs of traditional Professional Mobile Radio (PMR) user organizations such as: The TETRA standard has been specifically developed to meet the needs of a variety of traditional PMR user.



The role of the 800m trunking communication system base station



Trunking Basics

All radio channels in a trunking system are repeaters, so system traffic can be widely heard. The down side for scanner users is that, because a new frequency is assigned every ...

BelFone BF-TR952 Distributed Trunking Base Station , Scalable

BelFone BF-TR952 is a distributed trunking base station designed for seamless, scalable, and reliable communication. With advanced DMR trunking, IP interconnect, and wide coverage, it ...



DMR Tier-III Trunking

Hytera DMR Tier III Trunking, developed from the ETSI DMR open standard, is an IP based Digital Trunked Platform specifically designed to provide mission critical voice, data, ...

[How does a TETRA base station work? - Wray Castle](#)

At the heart of a TETRA network is the base station, which serves as the central hub for communication between mobile radios and the



network infrastructure. The base station ...



Trunking Networks

Local systems with one base station only and (cellular) systems covering larger areas are in use. Base stations often are equipped also to connect to the fixed network.

Why Develop a Next-gen Cube Trunking Base Station?

This state-of-the-art communication system is engineered to enhance reliability, reduce operational costs, and offer seamless scalability for industries such as public safety, ...



ETSI

Full duplex voice for PABX and PSTN telephony communications Besides meeting the needs of traditional PMR user organizations, the TETRA standard has also been developed to meet the ...



Understanding 800MHz and VHF UHF Implicit P25 Control ...

The P25 trunking is a separate channel that is designated as the control resource and is different from the traffic channel in that it functions as a resource allocation and digital communication ...

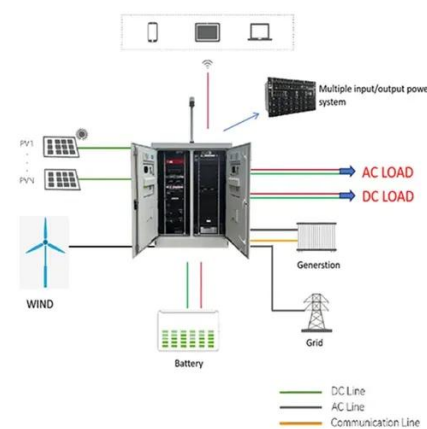


TETRA Radio System Tutorial: Trunking, Frame, ...

Base Stations (BS): Also known as TETRA Node B, base stations facilitate communication between mobile stations and the network. They are ...

TETRA Radio System Tutorial: Trunking, Frame, Frequency

Base Stations (BS): Also known as TETRA Node B, base stations facilitate communication between mobile stations and the network. They are connected to the Switching and ...



Trunked radio system

Trunking is a more automated and complex radio system, but provides the benefits of less user intervention to operate the radio and greater spectral efficiency with large numbers of users.



Contact Us

For inquiries, pricing, or partnerships:

<https://sccd-sk.eu>

Phone: +32 2 808 71 94

Email: info@sccd-sk.eu

Scan QR code for WhatsApp.

