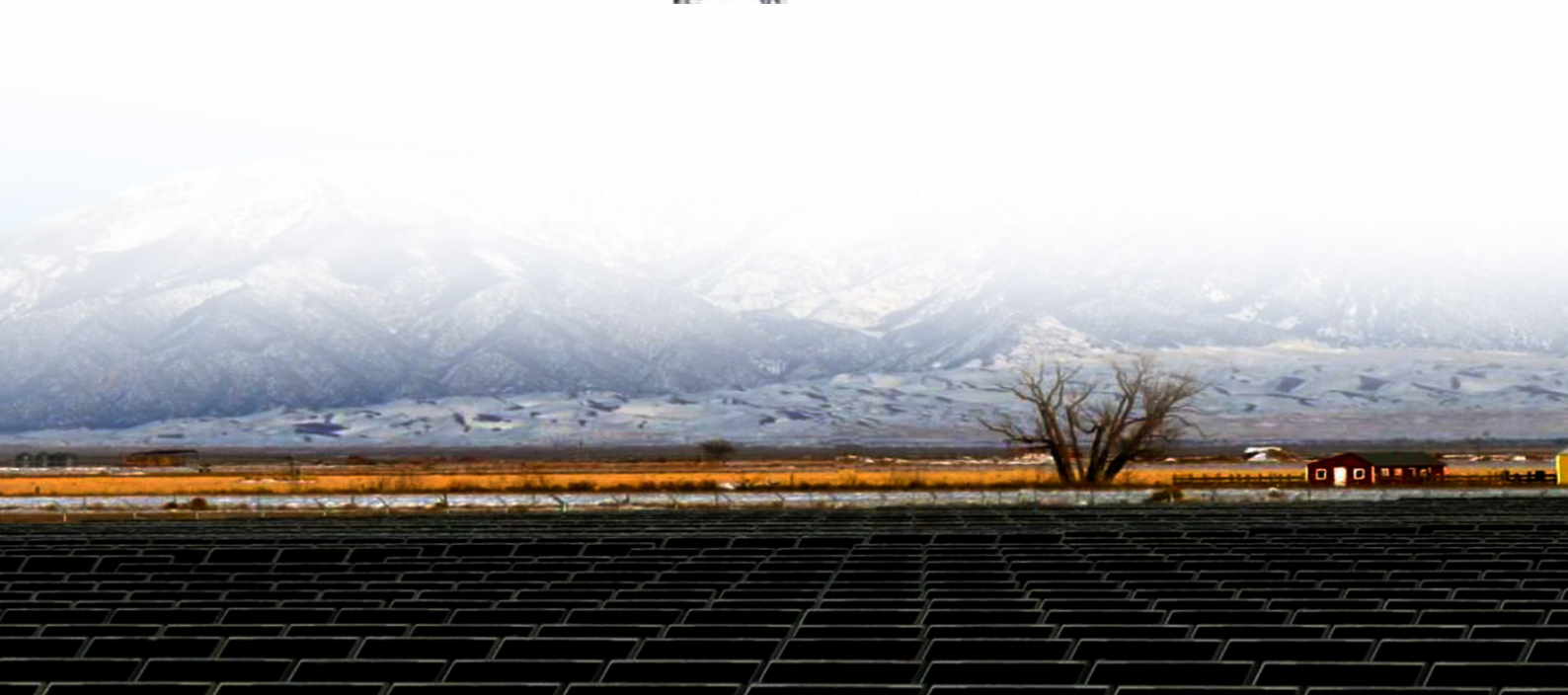




# The solar inverter waits for 60 seconds





## Overview

---

Wait 5-10 minutes — many inverters wait for the grid to stabilise. Reduce your house load (turn off air-con, pool pump, etc.) and restart the inverter. Check the AC breaker in your switchboard and the RCD (if you have one). Reset if tripped.

Wait 5-10 minutes — many inverters wait for the grid to stabilise. Reduce your house load (turn off air-con, pool pump, etc.) and restart the inverter. Check the AC breaker in your switchboard and the RCD (if you have one). Reset if tripped.

Wait 5-10 minutes — many inverters wait for the grid to stabilise. Reduce your house load (turn off air-con, pool pump, etc.) and restart the inverter. Check the AC breaker in your switchboard and the RCD (if you have one). Reset if tripped. Force a restart: turn DC off → wait 30 seconds → turn AC.

The inverter has 60 changes per second to sync with the grid. Sometimes it might be needed to observe the grid but still, 5 minutes is too much time and missed opportunities to synchronize:  $60 \text{ Hz} \times 60 \text{ seconds} \times 5 \text{ minutes} = 18,000 \text{ cycles}$  Am I missing something?

My inverter is Delta SOLIVIA Solar.

Solar inverter problems can cause performance dips, system outages, and even long-term damage to your setup if left unaddressed. In this article, we'll break down the most common solar inverter problems, explain how to detect them, and provide practical troubleshooting and maintenance tips. We'll.

The inverter doesn't work, the LED screen keeps showing waiting. status.  
Confirmation of basic information [Photo] SN number of the inverter Confirm the DC Switch is turn on. Guidance for installer Step1: Measuring the voltage on the PV side with a multimeter, ensure the red probe is connected to.

If your solar system suddenly stops producing power and shows an inverter fault message, it's natural to wonder how to reset an inverter fault and get your panels back online. In many cases, learning how to reset a solar inverter safely can clear the problem, especially if it's a minor issue like.

Steps1: Confirm the DC Switch is turn on Step2: Measuring the voltage on the PV



side with a multimeter, ensure the red probe is connected to the positive terminal and the black probe to the negative terminal. The correct measurement should be a positive number within the MPPT range. If a negative.



## The solar inverter waits for 60 seconds



### [Solar Inverter Problems & Solutions: Repairing ...](#)

How to reset a solar inverter: Power the inverter off, wait at least five minutes, then restart it. This basic reset often fixes temporary inverter problems. If ...

### SolarEdge Reboot Instructions NEW

Once your system has been rebooted, it will take at least 5 minutes to fully power up and you will likely see the LED on the inverter go through several different color configurations.



### [Solar Inverter Problems & Solutions: Repairing Inverters](#)

How to reset a solar inverter: Power the inverter off, wait at least five minutes, then restart it. This basic reset often fixes temporary inverter problems. If these troubleshooting steps don't solve ...



### [Common Solar Inverter Problems and How to Fix Them](#)

Discover the top 5 solar inverter problems, how to fix them, and expert tips to extend inverter life. Troubleshoot issues before they impact your solar



savings.



## How to solve the problem that the inverter is stuck in waiting mode?

Steps1: Confirm the DC Switch is turn on. Step2: Measuring the voltage on the PV side with a multimeter, ensure the red probe is connected to the positive terminal and the ...



## [SolarEdge Inverter Shutdown & Restart Guide , Step-by-Step](#)

Need to safely shut down or restart your SolarEdge inverter? Follow this clear step-by-step guide for homeowners. Simple and easy to follow.



## [Solar system not working? Identify and fix these ...](#)

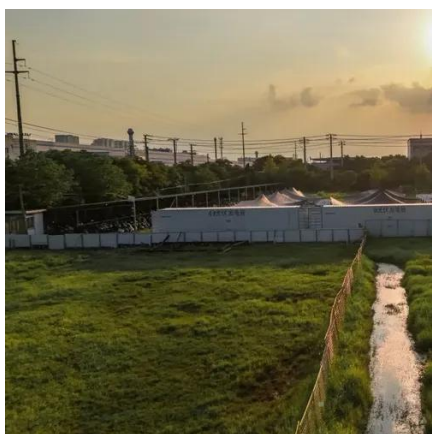
Knowing how to spot and resolve these issues early can help you maintain steady solar performance and avoid bigger problems down ...





## Solar system not working? Identify and fix these common issues

Knowing how to spot and resolve these issues early can help you maintain steady solar performance and avoid bigger problems down the line. This guide will walk you through ...



### Inverter is stuck in waiting mode

Confirm the DC Switch is turn on. Guidance for installer. Step1: Measuring the voltage on the PV side with a multimeter, ensure the red probe is connected to the positive terminal and the ...

### How to Reset a Solar Inverter Fault: Decoding Inverter Fault Codes

To reset most solar inverter faults, turn off the AC isolator near your main panel, then turn off the DC isolator next to the inverter or array. Wait at least 60 seconds, then turn ...



### [Common Solar Inverter Issues and How to Fix Them](#)

Solve common solar inverter problems like no power, overheating & error codes. Our troubleshooting guide helps you fix issues quickly & easily.



## Why does inverter synchronization with the grid take 5 minutes?

As per my observations and experience, 30 to 60 seconds time is sufficient to synchronization of solar grid inverter to connect with grid and export power to grid.



## How to solve the problem that the inverter is stuck ...

Steps1: Confirm the DC Switch is turn on. Step2: Measuring the voltage on the PV side with a multimeter, ensure the red probe is ...





## Contact Us

---

For inquiries, pricing, or partnerships:

<https://sccd-sk.eu>

Phone: +32 2 808 71 94

Email: [info@sccd-sk.eu](mailto:info@sccd-sk.eu)

Scan QR code for WhatsApp.

