



The voltage measured by the solar container lithium battery pack is 0





Overview

What voltage is 0% lithium ion?

The voltage at 0% charge for a lithium-ion cell is typically around 2.5V to 3.0V, depending on the specific chemistry. However, it's important to note that discharging a lithium-ion battery to 0% can damage it and should be avoided.

What voltage is 0% lithium ion?

The voltage at 0% charge for a lithium-ion cell is typically around 2.5V to 3.0V, depending on the specific chemistry. However, it's important to note that discharging a lithium-ion battery to 0% can damage it and should be avoided.

The voltage determines the capacity of the battery such as how much potential a battery will hold before it is discharged. Voltage also tells you the state of charge (SoC) of the battery and indicates when to recharge the battery or avoid over-discharging. This article discusses the details of.

Here's a useful battery pack calculator for calculating the parameters of battery packs, including lithium-ion batteries. Use it to know the voltage, capacity, energy, and maximum discharge current of your battery packs, whether series- or parallel-connected. Using the battery pack calculator: Just.

State of Charge (SOC) Estimation: The voltage of a lithium battery pack is closely related to its state of charge. By measuring the voltage, we can estimate how much energy is left in the battery, which is essential for users to plan their power consumption. Battery Health Monitoring: Changes in.

To calculate battery voltage, you measure the potential difference between the positive and negative terminals using a digital multimeter or voltmeter. It's a quick, non-invasive method that tells you the electrical health of your battery—whether you're working with car batteries, solar setups, or.

Solar battery charge is measured in terms of state-of-charge (SOC) – otherwise known as the voltage within the battery. If you want to know how to check what charge your solar battery has, just keep reading! What is the state-of-charge of a battery?



The state-of-charge is how much charge is left.

In this comprehensive guide, we'll explain how to read and use voltage charts for 12V batteries, covering lithium, LiFePO₄, AGM, and traditional lead acid options.
What Is a 12V Battery Voltage Chart?

A 12V battery voltage chart correlates a battery's voltage level with its state of charge (SOC).



The voltage measured by the solar container lithium battery pack is 0



[Battery Pack Calculator , Good Calculators](#)

Here's a useful battery pack calculator for calculating the parameters of battery packs, including lithium-ion batteries. Use it to know the voltage, capacity, energy, and maximum discharge ...

[Ultimate Guide to Lithium-Ion Battery Voltage ...](#)

The state of charge (SoC) of a lithium-ion battery is displayed depending on various voltages on the voltage chart. This Jackery guide ...



[Lithium Ion Battery Voltage Chart \(Voltage and Charge\)](#)

Use the chart of battery voltages chart below to determine the discharge chart for each battery. As you can see the voltages are significantly different across the different types of batteries. All ...

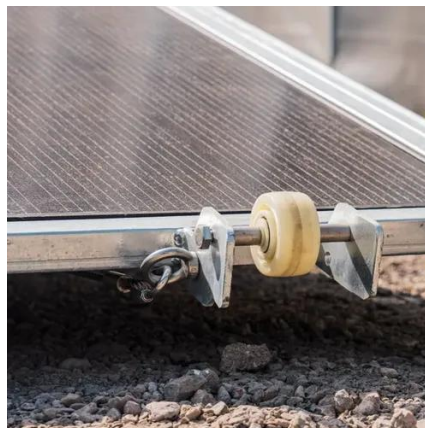


[Battery Voltage Chart for Batteries Charged By Solar Panels](#)

This voltage level should be very slightly less than the voltage measured on the actual solar panel, but if there is no voltage reading, there may be a



break in the connection along the wires.



[Ultimate Guide to Lithium-Ion Battery Voltage Chart](#)

The state of charge (SoC) of a lithium-ion battery is displayed depending on various voltages on the voltage chart. This Jackery guide provides a thorough explanation of ...

12V Battery Voltage Chart - Read Levels & State of Charge -- Solar ...

12V Lithium Battery Voltage Chart: Best Practice: Use a Battery Management System (BMS) and avoid discharging below 10% to prevent damage. LiFePO4 (Lithium Iron ...



[How to measure the voltage of a lithium battery pack?](#)

Abnormal Voltage Readings: If the measured voltage is significantly higher or lower than the expected value, it may indicate a ...





[Lithium Ion Battery Voltage Chart \(Voltage and ...\)](#)

Use the chart of battery voltages chart below to determine the discharge chart for each battery. As you can see the voltages are significantly ...



Lithium Ion Battery Voltage Explained: Everything You Need to ...

The lithium-ion cell voltage is capable of fluctuating slightly based on temperature, usage, etc. whereas the nominal voltage of the battery always works as an average reference ...

[How to measure the voltage of a lithium battery pack?](#)

Abnormal Voltage Readings: If the measured voltage is significantly higher or lower than the expected value, it may indicate a problem with the battery pack. For example, a very ...



How to Calculate Battery Voltage

Quickly learn how to calculate battery voltage accurately with this easy-to-follow guide. Ideal for beginners and DIYers.





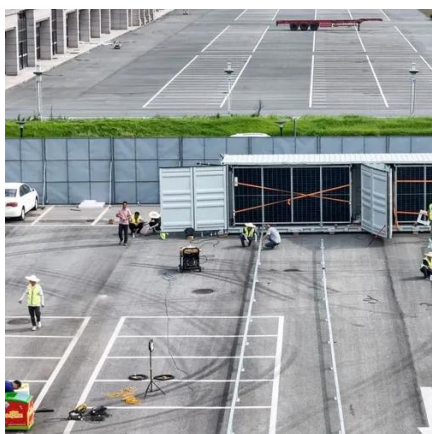
[The Complete Guide to Lithium-Ion Battery Voltage ...](#)

For a single lithium-ion cell, it's typically 3.6V or 3.7V. Open Circuit Voltage: This is the voltage when the battery isn't connected to ...



[Battery Voltage Chart for Batteries Charged By Solar Panels](#)

12V Lithium Battery Voltage Chart: Best Practice: Use a Battery Management System (BMS) and avoid discharging below 10% to ...



[LiFePO4 Battery Pack: 2025 Technical Parameters Guide](#)

Discover 21 key technical parameters of LiFePO4 battery packs in this 2025 beginner-friendly guide. Learn voltage, capacity, BMS, and more for solar and EV applications.



[The Complete Guide to Lithium-Ion Battery Voltage Charts](#)

For a single lithium-ion cell, it's typically 3.6V or 3.7V. Open Circuit Voltage: This is the voltage when the battery isn't connected to anything. It's usually around 3.6V to 3.7V for a ...





Contact Us

For inquiries, pricing, or partnerships:

<https://sccd-sk.eu>

Phone: +32 2 808 71 94

Email: info@sccd-sk.eu

Scan QR code for WhatsApp.

