



# There is a resistor at the high voltage output end of the inverter





## Overview

---

What is the output voltage and current waveform of an inverter?

(2) Output voltage and current waveform The inverter bridge of most inverters adopts SPWM modulation, and its output voltage is a series of rectangular waves with a duty cycle distributed according to the sine law; due to the inductance of the motor stator winding, the stator current is very close to a sine wave.

How does an inverter work?

The inverter first converts the input AC power to DC power and again creates AC power from the converted DC power using PWM control. The inverter outputs a pulsed voltage, and the pulses are smoothed by the motor coil so that a sine wave current flows to the motor to control the speed and torque of the motor.

How does a general-purpose inverter work?

The pulses are smoothed by the motor coil, and a sine wave current flows. As a result, the output from a general-purpose inverter cannot be used for equipment other than motors. V/f control is a method of controlling a motor by supplying a specific current to the coil to output a specific torque.

Can a DC inverter overvolt a 380 volt power supply?

Countermeasure: The DC voltage upper limit of the inverter is generally set at a voltage of more than 700V, which is equivalent to an input AC power voltage of about 500V, which is more than 30% higher than 380V. This situation rarely occurs. Short-term power supply overvoltage can be prevented by installing an AC reactor. 1.



## There is a resistor at the high voltage output end of the inverter

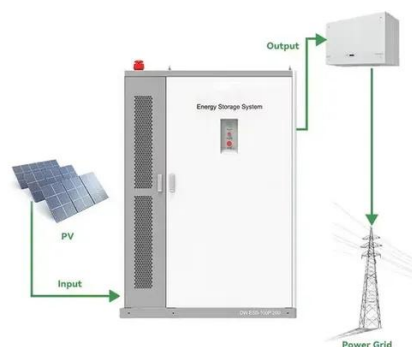


### [There Definition & Meaning , Britannica Dictionary](#)

THERE meaning: 1 : in that place at that location used in speech when something is found; 2 : to or into that place

### HiBuS® Technology

V OH and V OL represent the "high" and "low" output voltages of the inverter V = output voltage when OH Vin = '0' (V Output High) V = output voltage when OL Vin = '1' (V Output Low) ...



### Their vs. There

When do we use "there"? While "their" is a seemingly simple word, with two distinct uses and a clear meaning, "there" is a little bit more complex, in regard to the contexts where it may ...

### there adverb

Definition of there adverb in Oxford Advanced Learner's Dictionary. Meaning, pronunciation, picture, example sentences, grammar, usage notes, synonyms and more.



## Inverter Overload Protection

A shunt resistor, a low-resistance, high-wattage component, is placed in series with the inverter output. As current flows through the load, a small voltage drop is generated across ...



## Inverter Common Faults Solutions

During normal operation, we may encounter the inverter prompting the current limit. For general inverters that cannot work ...



## there, adv., n., & int. meanings, etymology and more , Oxford ...

There are 27 meanings listed in OED's entry for the word there, six of which are labelled obsolete. See 'Meaning & use' for definitions, usage, and quotation evidence.



## Summary of common causes and countermeasures of inverter ...

Cause: When the current limiting resistor or the thyristor of the short-circuit current limiting resistor is damaged, the filter capacitor inside the inverter cannot be charged, causing undervoltage ...



## CSM\_Inverter\_TG\_E\_1\_1

Although there is no feedback signal from a sensor, the current and voltage output from the inverter to the motor are used to correct the output waveform. This enables finer speed control.

## There

1. Used to introduce a clause or sentence: There are numerous items. There must be another exit.
2. Used to indicate an unspecified person in direct address: Hello there.



## [THERE definition and meaning , Collins English Dictionary](#)

You use there in front of certain verbs when you are saying that something exists, develops, or can be seen. Whether the verb is singular or plural depends on the noun which follows the verb.





## [Simple H-Bridge Inverter Circuit using IR2184 ICs](#)

This IC has internal high current driver stages which works like a buffer or switch, and it helps to switch the MOSFETs efficiently through bootstrap network, even for high power ...



## [Common faults and solutions for inverters](#)

Electrical quantity faults are usually manifested as unstable output voltage, current or power of the inverter, or failure to reach the ...



## **How to Reduce the Power Resistor for DC-Link Discharge in ...**

Since the AFE539F1-Q1 requires the measured DC-Link voltage as an input value, there is a need for a resistor divider. To save space to a comparably long resistor chain and to limit the ...



## [Common faults and solutions for inverters](#)

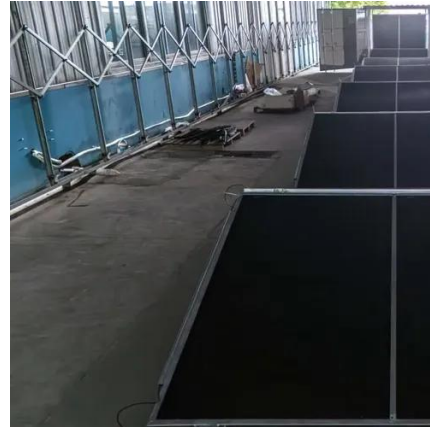
Electrical quantity faults are usually manifested as unstable output voltage, current or power of the inverter, or failure to reach the expected value. Such faults may be caused by ...





## lecture12.DVI

Contents: Introduction to digital electronics: the inverter NMOS inverter with resistor pull up



### Inverter Overload Protection

A shunt resistor, a low-resistance, high-wattage component, is placed in series with the inverter output. As current flows through the ...



### THERE Definition & Meaning

The meaning of THERE is in or at that place --often used interjectionally. How to use there in a sentence. There vs. They're vs. Their



### [How to Use They're, There, and Their. Merriam-Webster](#)

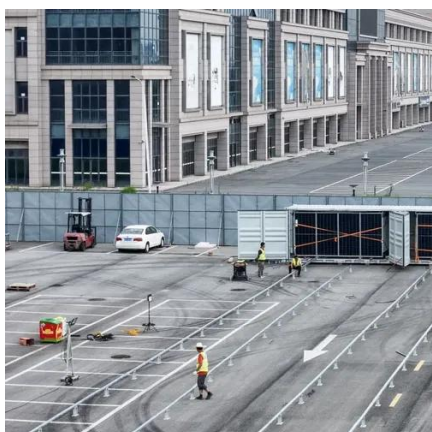
They're, their, and there are among the most commonly confused homophones. Here, some tricks and examples to help you use them correctly.





## "Their" vs. "There" vs. "They're": What's the Difference?

In this article, we'll explain the meanings of their, there, and they're, how to use each word correctly, and provide example sentences for each term. We'll also give some tips ...

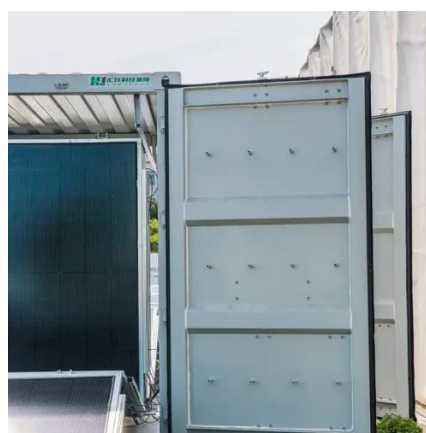


## THERE , definition in the Cambridge English Dictionary

We can use there at the start of a clause as a type of indefinite subject. This means that we can put the actual subject at the end of the clause and so give it emphasis or focus (underlined ...

## **lecture11\_f**

In a resistive NMOS inverter or any non-CMOS inverter  $V_{OH}$  and  $V_{OL}$  needs to be computed.  $V_{OH}$  is the output of inverter when the input is zero.  $V_{OL}$  is the output of the inverter when ...



## **Inverter Common Faults Solutions**

During normal operation, we may encounter the inverter prompting the current limit. For general inverters that cannot work normally and smoothly when the current limit ...





## Contact Us

---

For inquiries, pricing, or partnerships:

<https://sccd-sk.eu>

Phone: +32 2 808 71 94

Email: [info@sccd-sk.eu](mailto:info@sccd-sk.eu)

Scan QR code for WhatsApp.

