



# Three-phase three-bridge voltage source inverter





## Overview

---

A three phase bridge inverter is a device which converts DC power input into three phase AC output. Like single phase inverter, it draws DC supply from a battery or more commonly from a rectifier. A basic three phase inverter is a six step bridge inverter. It uses a minimum of 6.

A three phase bridge inverter is a device which converts DC power input into three phase AC output. Like single phase inverter, it draws DC supply from a battery or more commonly from a rectifier. A basic three phase inverter is a six step bridge inverter. It uses a minimum of 6.

However, most 3-phase loads are connected in wye or delta, placing constraints on the instantaneous voltages that can be applied to each branch of the load. For the wye connection, all the “negative” terminals of the inverter outputs are tied together, and for the delta connection, the inverter.

Modern electronic systems cannot function without three-phase inverters, which transform DC power into three-phase AC power with adjustable amplitude, frequency, and phase difference. They are essential in several applications, including as power distribution networks, renewable energy systems, and.

The voltage-source inverter (VSI) topology is a DC-AC converter that transforms a DC voltage into an AC voltage at its output. Analogously, the current-source inverter (CSI) topology transforms a DC current into an AC current at its output. The DC source of voltage or current is obtained either.

This article outlines the definition and working principle of three phase bridge inverter. 180 degree conduction mode of operation, formula for phase & line voltages of three phase inverter is also explained in this article. A three phase bridge inverter is a device which converts DC power input.

In order to realize the three-phase output from a circuit employing dc as the input voltage a three-phase inverter has to be used. The inverter is build of gives the required output. In this chapter the concept of switching function and the associated switching matrix is explained. Lastly the.

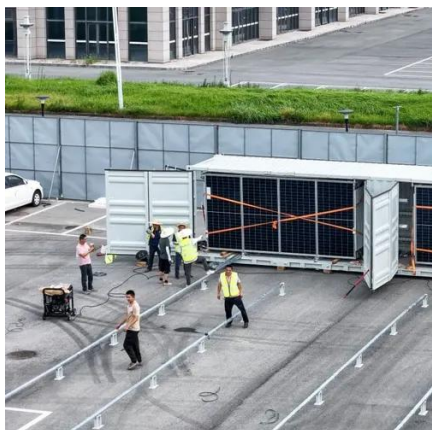
A three-phase inverter is a type of power electronic device that converts DC (Direct



Current) power into AC (Alternating Current) power with three phases. It is widely used in various applications such as motor drives, renewable energy systems, and power transmission. The main function of a.



## Three-phase three-bridge voltage source inverter



### Three Phase Inverter : Circuit, Working and Its ...

A three-phase inverter is used to change the DC voltage to three-phase AC supply. Generally, these are used in high power and variable frequency ...

### Analysis of Three-Phase Voltage-Source Inverters

Similar to the single-phase VSI, the three-phase VSI converts a DC voltage to three-phase AC voltage and current in the output. The three-phase output is synthesized by three half-bridge ...



### 3-Phase Inverter

Cascaded Multilevel Inverter is a 3-phase inverter designed for electric utility applications, offering precise control by employing ...

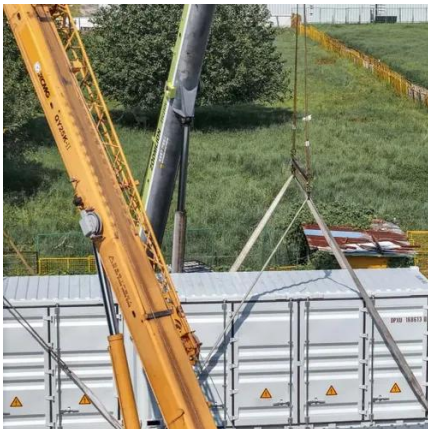
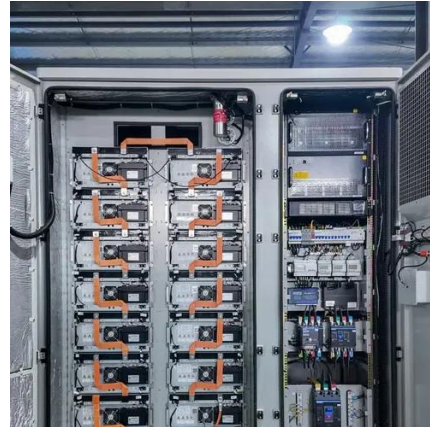


### Three Phase Bridge Inverter , Working Principle:

The voltage waveforms for three phase-to-neutral voltages of the three phase bridge Inverter of Fig. 11.49 can be easily drawn by this procedure. It is



immediately obvious that these voltages ...



### Three Phase Bridge Inverter Explained

Circuit Diagram of Three Phase Bridge Inverter  
Working Principle of Three Phase Bridge Inverter  
Formula of Line and Phase Voltage  
Figure below shows a simple power circuit diagram of a three phase bridge inverter using six thyristors and diodes. A careful observation of the above circuit diagram reveals that power circuit of a three phase bridge inverter is equivalent to three half bridge inverters arranged side by side. The three phase load conn...See more on electricalbaba Tennessee Tech University[PDF]

## CHAPTER4

4.1 Introduction In this chapter the three-phase inverter and its functional operation are discussed. In order to realize the three-phase output from a circuit employing dc as the input voltage a ...

### Three Phase Bridge Inverter , Working Principle:

The voltage waveforms for three phase-to-neutral voltages of the three phase bridge Inverter of Fig. 11.49 can be easily drawn by this procedure. It is ...



## CHAPTER4





4.1 Introduction In this chapter the three-phase inverter and its functional operation are discussed. In order to realize the three-phase output from a circuit employing dc as the input voltage a ...

### 3-Phase Inverter

Cascaded Multilevel Inverter is a 3-phase inverter designed for electric utility applications, offering precise control by employing multiple voltage levels to create a stepped ...



### Lecture 23: Three-Phase Inverters

In particular, considering "full-bridge" structures, half of the devices become redundant, and we can realize a 3-phase bridge inverter using only six switches (three half-bridge legs).

### Three-Phase Inverters

The primary features and benefits of three-phase inverters over single-phase inverters are highlighted in this section. We will go through numerous three-phase inverter types, their ...





### Three Phase VSI with 120° and 180° Conduction ...

The main function of a three-phase inverter is to control the switching of power electronic devices, typically transistors or IGBTs (Insulated Gate ...



### Three Phase Bridge Inverter Explained

A three phase bridge inverter is a device which converts DC power input into three phase AC output. Like single phase inverter, it draws DC supply from a battery or more ...



### Three Phase Inverter , DC-TO-AC INVERTER

The input ac is first converted into dc and then converted back to ac of new frequency. The square wave inverter discussed in this lesson may be used for dc to ac conversion. Such a circuit ...

### Three Phase Inverter : Circuit, Working and Its Applications

A three-phase inverter is used to change the DC voltage to three-phase AC supply. Generally, these are used in high power and variable frequency drive applications like HVDC power ...





### Three Phase VSI with 120° and 180° Conduction Mode

The main function of a three-phase inverter is to control the switching of power electronic devices, typically transistors or IGBTs (Insulated Gate Bipolar Transistors), to generate three-phase AC ...



✓ TELECOM CABINET

✓ BRAND NEW ORIGINAL

✓ HIGH-EFFICIENCY





## Contact Us

---

For inquiries, pricing, or partnerships:

<https://sccd-sk.eu>

Phone: +32 2 808 71 94

Email: [info@sccd-sk.eu](mailto:info@sccd-sk.eu)

Scan QR code for WhatsApp.

