



Tonga BMS solar container lithium battery





Tonga BMS solar container lithium battery

Tonga

Tonga is about 1,800 km (1,100 mi; 970 nmi) from New Zealand's North Island. Tonga was first inhabited roughly 2,500 years ago by people who were a part of the Lapita culture, Polynesian ...



Tonga

Tonga, officially the Kingdom of Tonga, is an island country in Polynesia, part of Oceania. The country has 171 islands, of which 45 are inhabited. Its total SU



Tonga

There are no photos for Tonga. Visit the Definitions and Notes page to view a description of each topic.



Tonga Travel Guide 2025 , Best Attractions, Festivals & Local Tips

Discover Tonga with Isla Guru's expert travel guide. Explore top attractions, local insights, and vibrant festivals for the perfect island getaway.



Tonga

The Kingdom of Tonga, also known as "The Friendly Islands," is situated in the Tongan archipelago in the southern Pacific Ocean, about a third of the way along a line running from ...

Tonga , Culture, Facts & Travel ,

Tonga is a South Pacific island nation consisting of 171 islands, of which 45 are inhabited. Tonga is a constitutional monarchy and a member of the British Commonwealth.



[Welcome to the Ministry of Tourism](#) [TONGA](#)

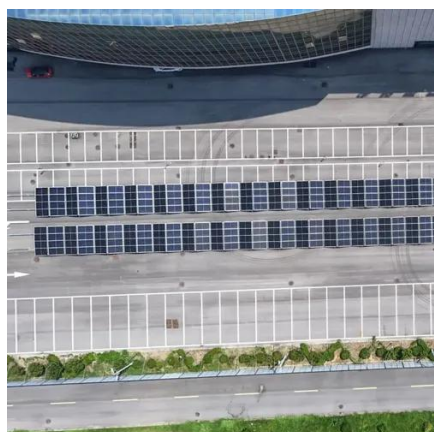
Set in the heart of the Pacific with its proud royal heritage and strong traditions, Tonga offers an authentic Polynesian experience. Explore crystal clear waters, vibrant reefs, and welcoming ...





Tonga

Find accommodation, hotels, attractions, festivals, events, tourist boards, cruising, diving, tours and much more. Tonga tourism and traveler information by the Tonga Visitors Bureau.



'Tonga is not a threat': anger as small Pacific nation falls under

The small Pacific nation of Tonga is one of more than a dozen countries to be hit with visa and entry restrictions on 1 January as the Trump administration tightens its ...

Tonga , Population, Volcano, Tsunami, Map, & People , Britannica

Tonga, country in the southwestern Pacific Ocean. It consists of some 170 islands divided into three main island groups: Tongatapu in the south, Ha'apai in the centre, and ...





Contact Us

For inquiries, pricing, or partnerships:

<https://sccd-sk.eu>

Phone: +32 2 808 71 94

Email: info@sccd-sk.eu

Scan QR code for WhatsApp.

