



Tunnel using Singapore folding container 25kW





Overview

What is the value of power cable tunnel in Singapore?

SINGAPORE POWER CABLE TUNNEL PROJECT • Project Value of S\$2 Billion
• Deepest, Tightest and Longest tunnels in Singapore • 24/7 operations • Average of 3500 workers per day • 6 main contracts • 18 active work sites • 35 km of tunnel construction • 14 TBMs underground Singapore – 11 November 2016
Cross-Island Cable Tunnel Project – Michael Chin.

What is Singapore Power transmission cable tunnel project?

Singapore Power Transmission Cable Tunnel Project aims to develop a long-term solution for Singapore's future power supply through the construction of two cable tunnels that will allow for efficient installation and replacement of underground cables to meet the increasing demand for power supply.

What is the deepest tunnel in Singapore?

The two tunnels, which run from North-South and East-West respectively, are built 60 metres underground and will reach Singapore's deepest tunnel depth. The EW2 sits on the Cable Tunnel East-West line. Mapei contributed to the "Cable Tunnel EW2" project (Singapore).

How is KSL tunnelling transforming Singapore's infrastructure?

KSL Tunnelling's extensive portfolio of underground construction projects is transforming Singapore's infrastructure. By improving connectivity and cutting travel times with the Cross Island Line (CIL)—Singapore's longest underground MRT line—KSL is enhancing accessibility across the island.



Tunnel using Singapore folding container 25kW

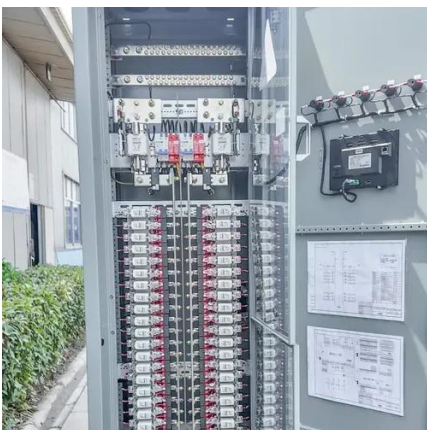


Singapore Tunnel Project

The Singapore tunnel system will span approximately 40km and have the capacity to house 1,200km of high voltage cables, to supply demand for electricity within Singapore.

Cross-Island Cable Tunnel Project

SINGAPORE POWER CABLE TUNNEL PROJECT
Project Value of S\$2 Billion Deepest, Tightest and Longest tunnels in Singapore 24/7 operations
Average of 3500 workers per day 6 main ...



Power Assets , Singapore

Maxwell GeoSystems collaborated with Singapore Power Assets and contractors Samsung, Hyundai, Nishimatsu, SKEC to deliver 40km of deep tunnel and 18 shafts and connecting adits ...

Robots on the lookout for water leaks and fires

The tunnels - named the North-South, East-West and Jurong Island-Pioneer tunnels - will be able to house 1,200km of extra-high-voltage cables.



Singapore-ans will begin tapping this ...



NORTH-SOUTH TRANSMISSION CABLE

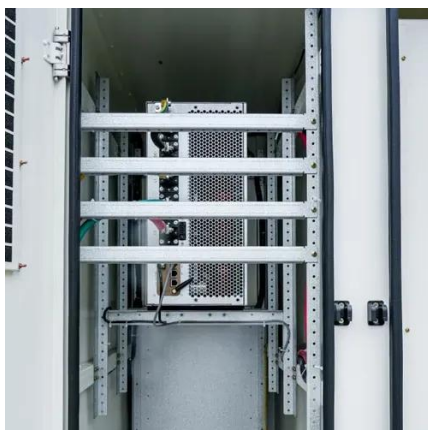
...

The works in this Contract comprise the construction of a 5.35km tunnel with an internal diameter of 6m. Three circular shafts will be provided as part ...



KSL Tunnelling Pte. Ltd.

This massive infrastructure project involved the construction of underground tunnels to convey wastewater from treatment plants to offshore discharge points. The DTSS has significantly ...



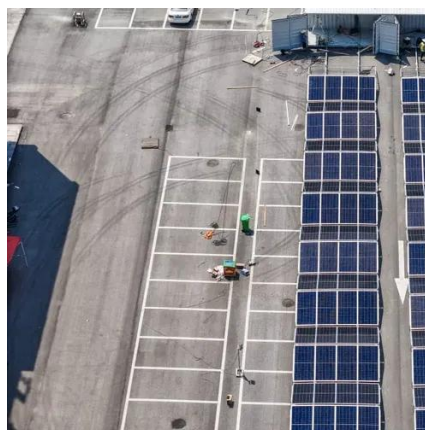
Power Assets , Singapore

Maxwell GeoSystems collaborated with Singapore Power Assets and contractors Samsung, Hyundai, Nishimatsu, SKEC to deliver 40km of ...



NORTH-SOUTH TRANSMISSION CABLE TUNNEL (NS2), (NS3)

The works in this Contract comprise the construction of a 5.35km tunnel with an internal diameter of 6m. Three circular shafts will be provided as part of the works, Mandai Shaft, Tagore Shaft ...



Project Cable Tunnel EW2, Singapore, UTT Mapei

Find out the intervention we carried out, the solutions adopted, products used and much more.

Challenges in the construction of a tunnel under crossing a ...

Out of the several possible routes studied, the most cost-effective and technically feasible route was selected by laying the proposed 1.6km-long pipelines that under crosses a channel via a ...

ESS



Singapore Tunnel Project

The Singapore tunnel system will span approximately 40km and have the capacity to house 1,200km of high voltage cables, to supply demand for ...

- ✓ LIQUID/AIR COOLING
- ✓ INTELLIGENT INTEGRATION
- ✓ PROTECTION IP54/IP55
- ✓ BATTERY /6000 CYCLES





KSL Tunnelling Pte. Ltd.

By enhancing access to key residential, industrial, and recreational hubs, the CIL tunnel will not only support Singapore's public transportation network but also reduce the reliance on private ...





Contact Us

For inquiries, pricing, or partnerships:

<https://sccd-sk.eu>

Phone: +32 2 808 71 94

Email: info@sccd-sk.eu

Scan QR code for WhatsApp.

